

Anti-BDH2 Mouse Monoclonal Antibody [Clone ID: OTI4G4]

Catalog Number: M07970

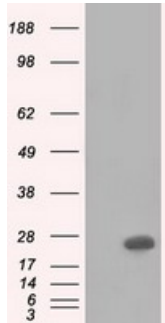
Overview

Product Name	Anti-BDH2 Mouse Monoclonal Antibody [Clone ID: OTI4G4]
Reactive Species	Human, Mouse, Rat
Description	Boster Bio Anti-BDH2 mouse monoclonal antibody, clone OTI4G4 (formerly 4G4). Catalog# M07970. Tested in FC, IF, IHC, WB. This antibody reacts with Human, Mouse, Rat.
Application	Flow Cytometry, IF, IHC, WB
Clonality	Monoclonal OTI4G4
Formulation	PBS (pH 7.3) containing 1% stabilizing protein, 50% glycerol and 0.02% sodium azide. This antibody is supplied in a stabilized formulation. Compatibility with conjugation reactions depends on the chemistry of the conjugation method used. For conjugation methods that are not compatible with the stabilizing components present in this formulation, a carrier-free antibody format is required.
Storage Instructions	Store at -20°C as received.
Host	Mouse
Uniprot ID	Q9BUT1

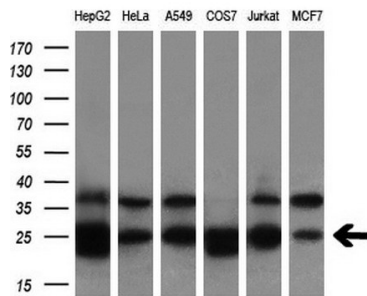
Technical Details

Immunogen	Full length human recombinant protein of human BDH2 (NP_064524) produced in HEK293T cell.
Isotype	IgG2a
Concentration	0.73 mg/ml
Purification	Purified from mouse ascites fluids or tissue culture supernatant by affinity chromatography (protein A/G)
Suggested Dilutions	WB 1:2000 IHC 1:50 IF 1:100 Flow Cytometry 1:100

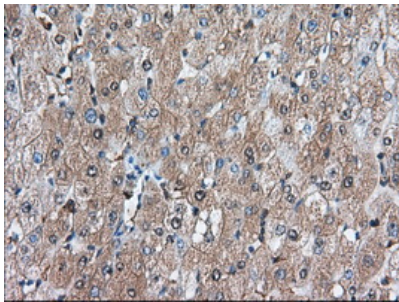
Anti-BDH2 Mouse Monoclonal Antibody [Clone ID: OTI4G4] (M07970) Images



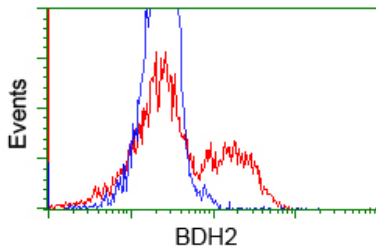
HEK293T cells were transfected with the pCMV6-ENTRY control (Left lane) or pCMV6-ENTRY BDH2 (Right lane) cDNA for 48 hrs and lysed. Equivalent amounts of cell lysates (5 ug per lane) were separated by SDS-PAGE and immunoblotted with anti-BDH2.



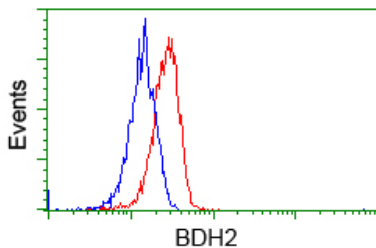
Western blot analysis of extracts (10ug) from 6 different cell lines by using anti-BDH2 monoclonal antibody (1:200).



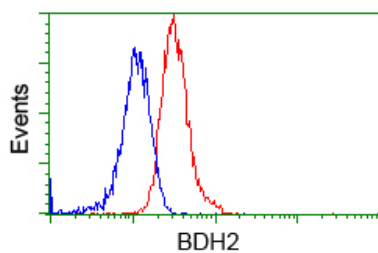
Immunohistochemical staining of paraffin-embedded Human liver tissue within the normal limits using anti-BDH2 mouse monoclonal antibody. (Heat-induced epitope retrieval by 10mM citric buffer)



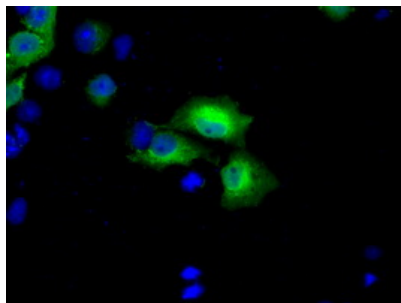
HEK293T cells transfected with either BDH2 (Myc-DDK-tagged) overexpress plasmid (Red) or empty vector control plasmid (Blue) were immunostained by anti-BDH2 antibody (M07970)



Flow cytometric Analysis of HeLa cells



Flow cytometric Analysis of Jurkat cells



Anti-BDH2 mouse monoclonal antibody (M07970) immunofluorescent staining of COS7 cells transiently transfected by pCMV6-ENTRY BDH2.

Submit a product review to Biocompare.com

Submit a review of this product to Biocompare.com to receive a \$20 Amazon.com giftcard! Your reviews help your fellow scientists make the right decisions. Thank you for your contribution.



Anti-BDH2 Mouse Monoclonal Antibody [Clone ID: OT14G4]

For Research Use Only. Not for use in diagnostic procedures.