

Anti-FBLIM1 Mouse Monoclonal Antibody [Clone ID: OTI3G1]

Catalog Number: M08050

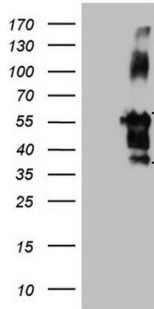
Overview

Product Name	Anti-FBLIM1 Mouse Monoclonal Antibody [Clone ID: OTI3G1]
Reactive Species	Human
Description	Boster Bio FBLIM1 mouse monoclonal antibody, clone OTI3G1 (formerly 3G1). Catalog# M08050. Tested in WB. This antibody reacts with Human.
Application	WB
Clonality	Monoclonal OTI3G1
Formulation	PBS (pH 7.3) containing 1% stabilizing protein, 50% glycerol and 0.02% sodium azide. This antibody is supplied in a stabilized formulation. Compatibility with conjugation reactions depends on the chemistry of the conjugation method used. For conjugation methods that are not compatible with the stabilizing components present in this formulation, a carrier-free antibody format is required.
Storage Instructions	Store at -20°C as received.
Host	Mouse
Uniprot ID	Q8WUP2

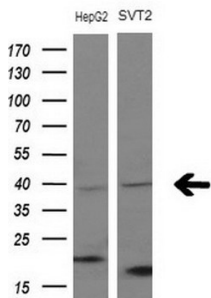
Technical Details

Immunogen	Human recombinant protein fragment corresponding to amino acids 1-242 of human FBLIM1 (NP_060026) produced in E.coli.
Isotype	IgG1
Concentration	1 mg/ml
Purification	Purified from mouse ascites fluids or tissue culture supernatant by affinity chromatography (protein A/G)
Suggested Dilutions	WB 1:2000

Anti-FBLIM1 Mouse Monoclonal Antibody [Clone ID: OTI3G1] (M08050) Images



HEK293T cells were transfected with the pCMV6-ENTRY control (Left lane) or pCMV6-ENTRY FBLIM1 (Right lane) cDNA for 48 hrs and lysed. Equivalent amounts of cell lysates (5 ug per lane) were separated by SDS-PAGE and immunoblotted with anti-FBLIM1.



Western blot analysis of extracts (10ug) from 2 different cell lines by using anti-FBLIM1 monoclonal antibody at 1:200 dilution.

Submit a product review to [Biocompare.com](https://www.biocompare.com)

Submit a review of this product to [Biocompare.com](https://www.biocompare.com) to receive a \$20 Amazon.com giftcard! Your reviews help your fellow scientists make the right decisions. Thank you for your contribution.



Anti-FBLIM1 Mouse Monoclonal Antibody [Clone ID: OTI3G1]

For Research Use Only. Not for use in diagnostic procedures.