

Anti-Calponin-1 CNN1 Rabbit Monoclonal Antibody, Clone#RM262

Catalog Number: M08065-2

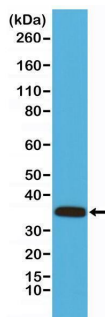
Overview

Product Name	Anti-Calponin-1 CNN1 Rabbit Monoclonal Antibody, Clone#RM262
Reactive Species	Human, Mouse
Description	Boster Bio Anti-Calponin-1 CNN1 Rabbit Monoclonal Antibody, Clone#RM262 (Catalog # M08065-2). Tested in WB, ICC applications. This antibody reacts with Human, Mouse.
Application	ICC, WB
Clonality	Monoclonal RM262
Formulation	50% Glycerol/PBS with 1% stabilizing protein and 0.09% sodium azide This antibody is supplied in a stabilized formulation. Compatibility with conjugation reactions depends on the chemistry of the conjugation method used. For conjugation methods that are not compatible with the stabilizing components present in this formulation, a carrier-free antibody format is required.
Storage Instructions	Store at -20°C for one year. Avoid repeated freeze-thaw cycles.
Host	Rabbit
Uniprot ID	P51911

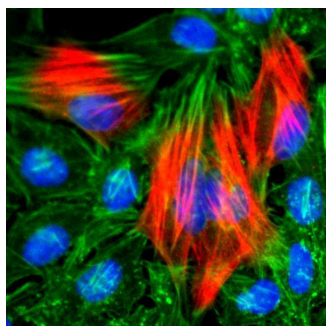
Technical Details

Immunogen	A peptide corresponding to the C-terminus of human Calponin-1
Cross Reactivity	This antibody reacts to human or mouse Calponin-1
Isotype	Rabbit IgG
Form	Liquid
Concentration	0.5-1mg/ml, actual concentration vary by lot. Use suggested dilution ratio to decide dilution procedure.
Purification	Protein A affinity purified from an animal origin-free culture supernatant
Suggested Dilutions	WB: 1:1000-1:2000 dilution Immunocytochemistry (ICC): 1:100-1:200.

Anti-Calponin-1 CNN1 Rabbit Monoclonal Antibody, Clone#RM262 (M08065-2) Images



Western Blotting result Western Blot analysis of mouse heart tissue lysates, using anti-Calponin-1 rabbit monoclonal antibody (Clone RM262), shows Calponin-1 expression in mouse heart tissue.



ICC result Immunocytochemistry of HeLa cells, using Calponin-1 Rabbit Monoclonal Antibody (Clone RM262) (red). Actin filaments have been labeled with fluorescein phalloidin (green), and nucleus stained with DAPI (blue).

Submit a product review to Biocompare.com

Submit a review of this product to Biocompare.com to receive a \$20 Amazon.com giftcard! Your reviews help your fellow scientists make the right decisions. Thank you for your contribution.



Anti-Calponin-1 CNN1 Rabbit Monoclonal Antibody, Clone#RM262

For Research Use Only. Not for use in diagnostic procedures.