

Anti-HES6 Mouse Monoclonal Antibody [Clone ID: OTI1D6]

Catalog Number: M08067

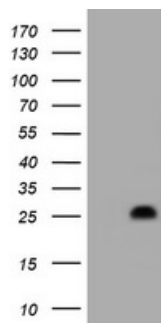
Overview

| | |
|----------------------|--|
| Product Name | Anti-HES6 Mouse Monoclonal Antibody [Clone ID: OTI1D6] |
| Reactive Species | Human, Mouse, Rat |
| Description | Boster Bio HES6 mouse monoclonal antibody, clone OTI1D6. Catalog# M08067. Tested in WB. This antibody reacts with Human, Mouse, Rat. |
| Application | WB |
| Clonality | Monoclonal OTI1D6 |
| Formulation | PBS (pH 7.3) containing 1% stabilizing protein, 50% glycerol and 0.02% sodium azide. This antibody is supplied in a stabilized formulation. Compatibility with conjugation reactions depends on the chemistry of the conjugation method used. For conjugation methods that are not compatible with the stabilizing components present in this formulation, a carrier-free antibody format is required. |
| Storage Instructions | Store at -20°C as received. |
| Host | Mouse |
| Uniprot ID | Q96HZ4 |

Technical Details

| | |
|---------------------|---|
| Immunogen | Full length human recombinant protein of human HES6 (NP_061115) produced in E.coli. |
| Isotype | IgG1 |
| Concentration | 1 mg/ml |
| Purification | Purified from mouse ascites fluids or tissue culture supernatant by affinity chromatography (protein A/G) |
| Suggested Dilutions | WB 1:2000 |

Anti-HES6 Mouse Monoclonal Antibody [Clone ID: OT11D6] (M08067) Images



HEK293T cells were transfected with the pCMV6-ENTRY control (Left lane) or pCMV6-ENTRY HES6 (Right lane) cDNA for 48 hrs and lysed. Equivalent amounts of cell lysates (5 ug per lane) were separated by SDS-PAGE and immunoblotted with anti-HES6.

Submit a product review to Biocompare.com

Submit a review of this product to Biocompare.com to receive a \$20 Amazon.com giftcard! Your reviews help your fellow scientists make the right decisions. Thank you for your contribution.



Anti-HES6 Mouse Monoclonal Antibody [Clone ID: OT11D6]

For Research Use Only. Not for use in diagnostic procedures.