

## Anti-PPME1 Mouse Monoclonal Antibody [Clone ID: OTI7F12]

Catalog Number: M08083

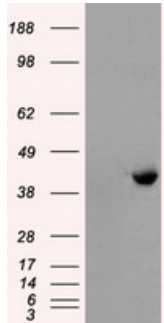
### Overview

Product Name	Anti-PPME1 Mouse Monoclonal Antibody [Clone ID: OTI7F12]
Reactive Species	Human, Mouse, Rat
Description	Boster Bio Anti-PPME1 mouse monoclonal antibody, clone OTI7F12 (formerly 7F12). Catalog# M08083. Tested in FC, IF, IHC, WB. This antibody reacts with Human, Mouse, Rat.
Application	Flow Cytometry, IF, IHC, WB
Clonality	Monoclonal OTI7F12
Formulation	PBS (pH 7.3) containing 1% stabilizing protein, 50% glycerol and 0.02% sodium azide. This antibody is supplied in a stabilized formulation. Compatibility with conjugation reactions depends on the chemistry of the conjugation method used. For conjugation methods that are not compatible with the stabilizing components present in this formulation, a carrier-free antibody format is required.
Storage Instructions	Store at -20°C as received.
Host	Mouse
Uniprot ID	Q9Y570

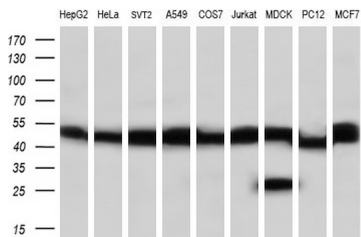
### Technical Details

Immunogen	Full length human recombinant protein of human PPME1 (NP_057231) produced in HEK293T cell.
Isotype	IgG1
Concentration	0.96 mg/ml
Purification	Purified from mouse ascites fluids or tissue culture supernatant by affinity chromatography (protein A/G)
Suggested Dilutions	WB 1:2000 IHC 1:50 IF 1:100 Flow Cytometry 1:100

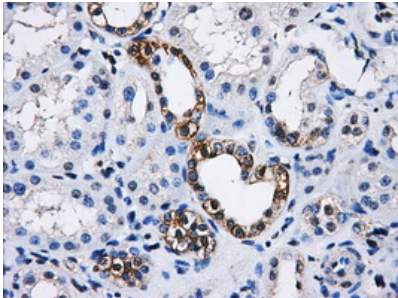
## Anti-PPME1 Mouse Monoclonal Antibody [Clone ID: OTI7F12] (M08083) Images



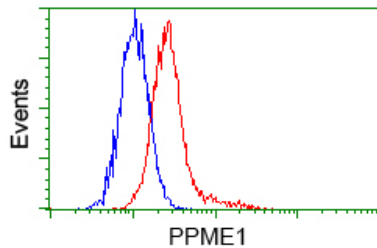
HEK293T cells were transfected with the pCMV6-ENTRY control (Left lane) or pCMV6-ENTRY PPME1 (Right lane) cDNA for 48 hrs and lysed. Equivalent amounts of cell lysates (5 ug per lane) were separated by SDS-PAGE and immunoblotted with anti-PPME1.



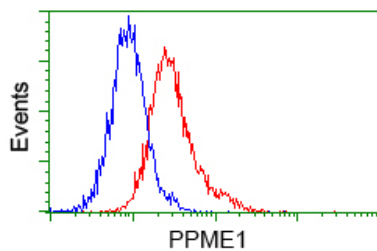
Western blot analysis of extracts (35ug) from 9 different cell lines by using anti-PPME1 monoclonal antibody (HepG2: human; HeLa: human; SVT2: mouse; A549: human; COS7: monkey; Jurkat: human; MDCK: canine; PC12: rat; MCF7: human) (1:200).



Immunohistochemical staining of paraffin-embedded Kidney tissue within the normal limits using anti-PPME1 mouse monoclonal antibody. (Heat-induced epitope retrieval by 10mM citric buffer)

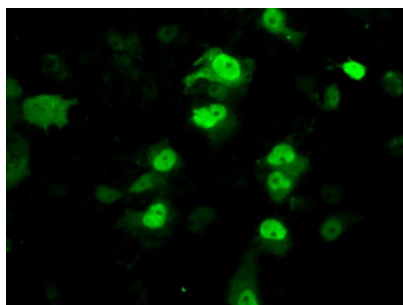


Flow cytometric analysis of HeLa cells



Flow cytometric analysis of Jurkat cells

Anti-PPME1 mouse monoclonal antibody (M08083) immunofluorescent staining of COS7 cells transiently



transfected by pCMV6-ENTRY PPME1.

## Submit a product review to Biocompare.com

Submit a review of this product to Biocompare.com to receive a \$20 Amazon.com giftcard! Your reviews help your fellow scientists make the right decisions. Thank you for your contribution.



Anti-PPME1 Mouse Monoclonal Antibody [Clone ID: OTI7F12]

For Research Use Only. Not for use in diagnostic procedures.