

Anti-Proteasome 20S beta 7 (PSMB7) Mouse Monoclonal Antibody [Clone ID: OTI4G9]

Catalog Number: M08095-1

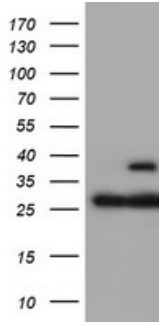
Overview

Product Name	Anti-Proteasome 20S beta 7 (PSMB7) Mouse Monoclonal Antibody [Clone ID: OTI4G9]
Reactive Species	Dog, Human, Monkey, Mouse, Rat
Description	Boster Bio PSMB7 (Proteasome 20S beta 7) mouse monoclonal antibody, clone OTI4G9 (formerly 4G9). Catalog# M08095-1. Tested in IF, WB. This antibody reacts with Human, Monkey, Mouse, Rat, Dog.
Application	IF, WB
Clonality	Monoclonal OTI4G9
Formulation	PBS (pH 7.3) containing 1% stabilizing protein, 50% glycerol and 0.02% sodium azide. This antibody is supplied in a stabilized formulation. Compatibility with conjugation reactions depends on the chemistry of the conjugation method used. For conjugation methods that are not compatible with the stabilizing components present in this formulation, a carrier-free antibody format is required.
Storage Instructions	Store at -20°C as received.
Host	Mouse
Uniprot ID	Q99436

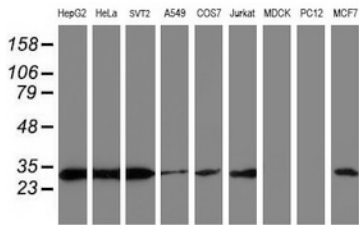
Technical Details

Immunogen	Human recombinant protein fragment corresponding to amino acids 58-277 of human PSMB7 (NP_002790) produced in E.coli.
Isotype	IgG1
Concentration	0.59 mg/ml
Purification	Purified from mouse ascites fluids or tissue culture supernatant by affinity chromatography (protein A/G)
Suggested Dilutions	WB 1:1000~2000 IF 1:100

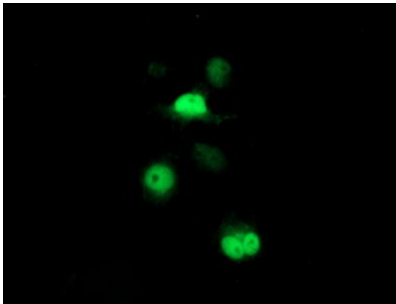
Anti-Proteasome 20S beta 7 (PSMB7) Mouse Monoclonal Antibody [Clone ID: OTI4G9] (M08095-1) Images



HEK293T cells were transfected with the pCMV6-ENTRY control (Left lane) or pCMV6-ENTRY PSMB7 (Right lane) cDNA for 48 hrs and lysed. Equivalent amounts of cell lysates (5 ug per lane) were separated by SDS-PAGE and immunoblotted with anti-PSMB7.



Western blot analysis of extracts (35ug) from 9 different cell lines by using anti-PSMB7 monoclonal antibody.



Anti-PSMB7 mouse monoclonal antibody (M08095-1) immunofluorescent staining of COS7 cells transiently transfected by pCMV6-ENTRY PSMB7.

Submit a product review to Biocompare.com

Submit a review of this product to Biocompare.com to receive a \$20 Amazon.com giftcard! Your reviews help your fellow scientists make the right decisions. Thank you for your contribution.



Anti-Proteasome 20S beta 7 (PSMB7) Mouse Monoclonal Antibody [Clone ID: OTI4G9]

For Research Use Only. Not for use in diagnostic procedures.