

Anti-NSFL1C Antibody (Center)

Catalog Number: M08116

About NSFL1C

Reduces the ATPase activity of VCP. Necessary for the fragmentation of Golgi stacks during mitosis and for VCP-mediated reassembly of Golgi stacks after mitosis. May play a role in VCP-mediated formation of transitional endoplasmic reticulum (tER) (By similarity). Inhibits the activity of CTSL (in vitro).

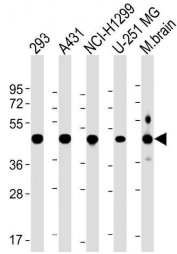
Overview

Product Name	Anti-NSFL1C Antibody (Center)
Reactive Species	Human, Mouse
Description	Boster Bio Anti-NSFL1C Antibody (Center) (Catalog # M08116). Tested in WB, IHC-P, Flow Cytometry application(s). This antibody reacts with Human, Mouse.
Application	Flow Cytometry, IHC-P, WB
Clonality	Polyclonal
Formulation	Purified polyclonal antibody supplied in PBS with 0.09% (W/V) sodium azide.
Storage Instructions	Maintain refrigerated at 2-8°C for up to 2 weeks. For long-term storage, store at -20°C in small aliquots to prevent freeze-thaw cycles.
Host	Rabbit
Uniprot ID	Q9UNZ2

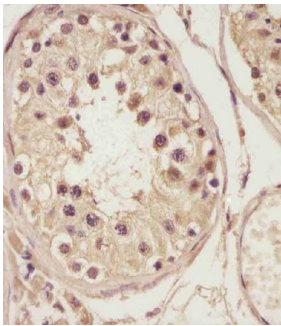
Technical Details

Immunogen	This NSFL1C antibody is generated from a rabbit immunized with a KLH conjugated synthetic peptide between 214-248 amino acids from the Central region of human NSFL1C.
Predicted Reactive Species	Bovine, Rat
Isotype	Rabbit IgG
Purification	This antibody is purified through a protein A column, followed by peptide affinity purification.
Suggested Dilutions	WB: 1:2000 IHC-P: 1:25 FC: 1:25

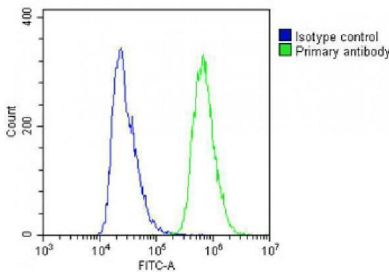
Anti-NSFL1C Antibody (Center) (M08116) Images



All lanes : Anti-NSFL1C Antibody (Center) at 1:2000 dilution
Lane 1: 293 whole cell lysate
Lane 2: A431 whole cell lysate
Lane 3: NCI-H1299 whole cell lysate
Lane 4: U-251 MG whole cell lysate
Lane 5: Mouse brain lysate
Lysates/proteins at 20 µg per lane. Secondary Goat Anti-Rabbit IgG, (H+L), Peroxidase conjugated at 1/10000 dilution. Predicted band size : 41 kDa
Blocking/Dilution buffer: 5% NFD/MTBST.



M08116 staining NSFL1C in human testis tissue sections by Immunohistochemistry (IHC-P -paraformaldehyde-fixed, paraffin-embedded sections). Tissue was fixed with formaldehyde and blocked with 3% BSA for 0.5 hour at room temperature; antigen retrieval was by heat mediation with a citrate buffer (pH6). Samples were incubated with primary antibody (1/25) for 1 hours at 37°C. A undiluted biotinylated goat polyvalent antibody was used as the secondary antibody.



Overlay histogram showing A431 cells stained with M08116 (green line). The cells were fixed with 2% paraformaldehyde and then permeabilized with 90% methanol for 10 min. The cells were then incubated in 2% bovine serum albumin to block non-specific protein-protein interactions followed by the antibody (1:25 dilution) for 60 min at 37°C. The secondary antibody used was Goat-Anti-Rabbit IgG, DyLight® 488 Conjugated Highly Cross-Adsorbed at 1/200 dilution for 40 min at Room temperature. Isotype control antibody (blue line) was rabbit IgG1 (1g/1x10⁶ cells) used under the same conditions. Acquisition of >10,000 events was performed.

Submit a product review to Biocompare.com

Submit a review of this product to Biocompare.com to receive a \$20 Amazon.com giftcard! Your reviews help your fellow scientists make the right decisions. Thank you for your contribution.



Anti-NSFL1C Antibody (Center)

For Research Use Only. Not for use in diagnostic procedures.