

## Anti-ARIH2 Mouse Monoclonal Antibody [Clone ID: OTI1B2]

Catalog Number: M08154

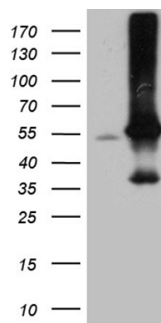
### Overview

|                      |  |
|----------------------|--|
| Product Name         | Anti-ARIH2 Mouse Monoclonal Antibody [Clone ID: OTI1B2]  |
| Reactive Species     | Human, Mouse, Rat  |
| Description          | Boster Bio ARIH2 mouse monoclonal antibody, clone OTI1B2. Catalog# M08154. Tested in WB. This antibody reacts with Human, Mouse, Rat.  |
| Application          | WB   |
| Clonality            | Monoclonal OTI1B2  |
| Formulation          | PBS (pH 7.3) containing 1% stabilizing protein, 50% glycerol and 0.02% sodium azide. This antibody is supplied in a stabilized formulation. Compatibility with conjugation reactions depends on the chemistry of the conjugation method used. For conjugation methods that are not compatible with the stabilizing components present in this formulation, a carrier-free antibody format is required. |
| Storage Instructions | Store at -20°C as received.  |
| Host                 | Mouse  |
| Uniprot ID           | O95376   |

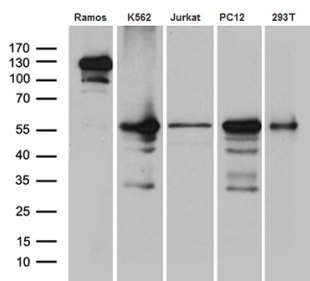
### Technical Details

|                     |  |
|---------------------|--|
| Immunogen           | Human recombinant protein fragment corresponding to amino acids 201-493 of human ARIH2 (NP_006312) produced in E.coli. |
| Isotype             | IgG1   |
| Concentration       | 1 mg/ml  |
| Purification        | Purified from mouse ascites fluids or tissue culture supernatant by affinity chromatography (protein A/G)              |
| Suggested Dilutions | WB 1:500   |

## Anti-ARIH2 Mouse Monoclonal Antibody [Clone ID: OTI1B2] (M08154) Images



HEK293T cells were transfected with the pCMV6-ENTRY control (Left lane) or pCMV6-ENTRY ARIH2 (Right lane) cDNA for 48 hrs and lysed. Equivalent amounts of cell lysates (5 ug per lane) were separated by SDS-PAGE and immunoblotted with anti-ARIH2.



Western blot analysis of extracts (35ug) from 5 cell lines by using anti-ARIH2 monoclonal antibody (1:500).

### Submit a product review to [Biocompare.com](https://www.biocompare.com)

Submit a review of this product to [Biocompare.com](https://www.biocompare.com) to receive a \$20 Amazon.com giftcard! Your reviews help your fellow scientists make the right decisions. Thank you for your contribution.



Anti-ARIH2 Mouse Monoclonal Antibody [Clone ID: OTI1B2]

For Research Use Only. Not for use in diagnostic procedures.