

Anti-PDE1B Mouse Monoclonal Antibody [Clone ID: OTI6E4]

Catalog Number: M08156

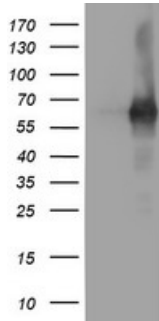
Overview

Product Name	Anti-PDE1B Mouse Monoclonal Antibody [Clone ID: OTI6E4]
Reactive Species	Human, Mouse, Rat
Description	Boster Bio PDE1B mouse monoclonal antibody, clone OTI6E4 (formerly 6E4). Catalog# M08156. Tested in FC, IF, IHC, WB. This antibody reacts with Human, Mouse, Rat.
Application	Flow Cytometry, IF, IHC, WB
Clonality	Monoclonal OTI6E4
Formulation	PBS (pH 7.3) containing 1% stabilizing protein, 50% glycerol and 0.02% sodium azide. This antibody is supplied in a stabilized formulation. Compatibility with conjugation reactions depends on the chemistry of the conjugation method used. For conjugation methods that are not compatible with the stabilizing components present in this formulation, a carrier-free antibody format is required.
Storage Instructions	Store at -20°C as received.
Host	Mouse
Uniprot ID	Q01064

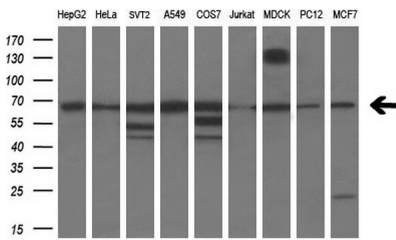
Technical Details

Immunogen	Full length human recombinant protein of human PDE1B (NP_000915) produced in HEK293T cell.
Isotype	IgG2b
Concentration	1 mg/ml
Purification	Purified from mouse ascites fluids or tissue culture supernatant by affinity chromatography (protein A/G)
Suggested Dilutions	WB 1:2000 IHC 1:150 IF 1:100 Flow Cytometry 1:100

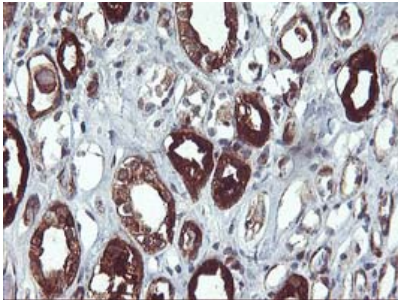
Anti-PDE1B Mouse Monoclonal Antibody [Clone ID: OTI6E4] (M08156) Images



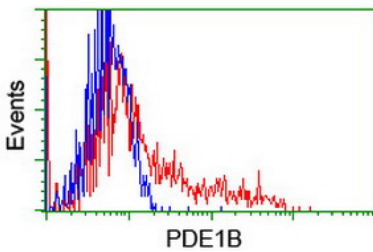
HEK293T cells were transfected with the pCMV6-ENTRY control (Left lane) or pCMV6-ENTRY PDE1B (Right lane) cDNA for 48 hrs and lysed. Equivalent amounts of cell lysates (5 ug per lane) were separated by SDS-PAGE and immunoblotted with anti-PDE1B.



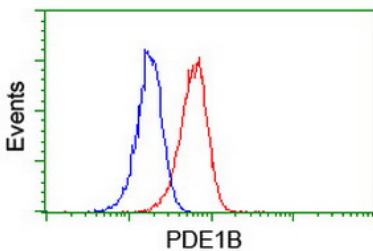
Western blot analysis of extracts (35ug) from 9 different cell lines by using anti-PDE1B monoclonal antibody (HepG2: human; HeLa: human; SVT2: mouse; A549: human; COS7: monkey; Jurkat: human; MDCK: canine; PC12: rat; MCF7: human) (1:200).



Immunohistochemical staining of paraffin-embedded Human Kidney tissue within the normal limits using anti-PDE1B mouse monoclonal antibody. (Heat-induced epitope retrieval by 10mM citric buffer)

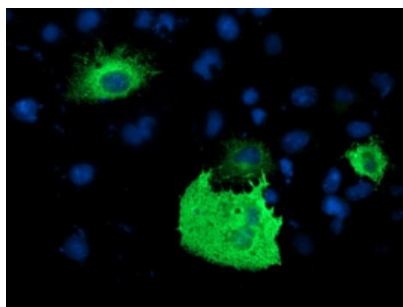


HEK293T cells transfected with either PDE1B (Myc-DDK-tagged) overexpress plasmid (Red) or empty vector control plasmid (Blue) were immunostained by anti-PDE1B antibody (M08156)



Flow cytometric Analysis of Jurkat cells

Anti-PDE1B mouse monoclonal antibody (M08156) immunofluorescent staining of COS7 cells transiently



transfected by pCMV6-ENTRY PDE1B.

Submit a product review to Biocompare.com

Submit a review of this product to Biocompare.com to receive a \$20 Amazon.com giftcard! Your reviews help your fellow scientists make the right decisions. Thank you for your contribution.



Anti-PDE1B Mouse Monoclonal Antibody [Clone ID: OTI6E4]

For Research Use Only. Not for use in diagnostic procedures.