

Anti-CLDN6 Reference Antibody (IMAB027)

Catalog Number: M08182-10

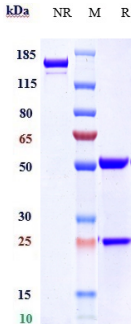
Overview

Product Name	Anti-CLDN6 Reference Antibody (IMAB027)
Reactive Species	Human
Description	Boster Bio Anti-CLDN6 Reference Antibody (IMAB027) (Catalog # M08182-10). Tested in Flow Cytometry, ELISA, FTA. This antibody reacts with Human. Endotoxin: < 0.939EU/ug,determined by LAL method. Expression system: CHO Cell
Application	ELISA, Flow Cytometry, Functional Assay, Kinetics
Clonality	Monoclonal
Formulation	Purified monoclonal antibody supplied in PBS, pH6.0, without preservative.This antibody is purified through a protein A column.
Storage Instructions	Maintain refrigerated at 2-8°C for up to 2 weeks. For long-term storage, aliquot and store at -20°C to avoid repeated freeze-thaw cycles.
Uniprot ID	P56747

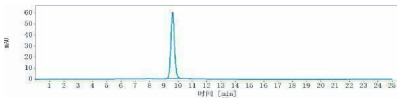
Technical Details

Isotype	IgG1
Form	Liquid

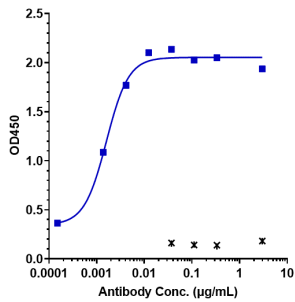
Anti-CLDN6 Reference Antibody (IMAB027) (M08182-10) Images



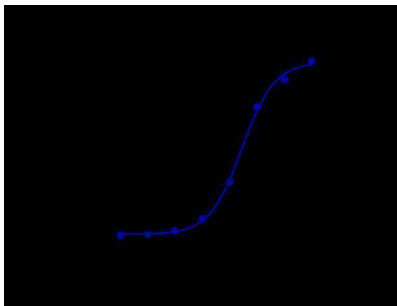
Anti-CLDN6 Reference Antibody (IMAB027) on SDS-PAGE under reducing (R) condition. The gel was stained with Coomassie Blue. The purity of the protein is greater than 95%



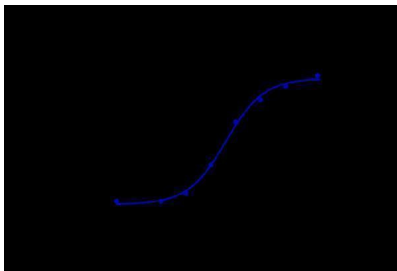
The purity of Anti-CLDN6 Reference Antibody (IMAB027) is more than 98.41%



Immobilized human CLDN6 VLP at 8 µg/mL can bind Anti-CLDN6 Reference Antibody (IMAB027)

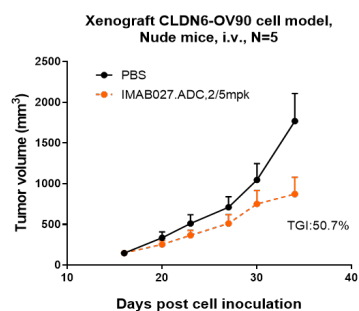
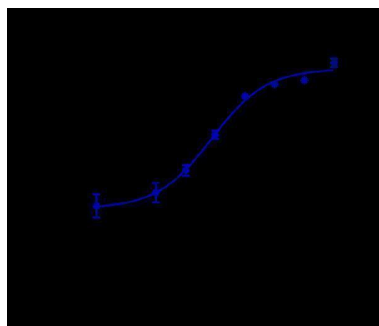


Human CLDN6 CHO cells were stained with Anti-CLDN6 Reference Antibody (IMAB027) and negative control protein respectively



Anti-CLDN6 Reference Antibody (IMAB027)-induced ADCC activity was evaluated using Human CD16a (158V) (Luc) Jurkat Reporter Cell. The max induction fold was approximately 14.16

Anti-CLDN6 Reference Antibody (IMAB027) by huCLDN6-HEK293 increased with the increase of antibody concentration



IMAB027 inhibited the tumor growth of OV90 on Balb/c nude mice. The result showed significant anti-tumor effects

Submit a product review to Biocompare.com

Submit a review of this product to Biocompare.com to receive a \$20 Amazon.com giftcard! Your reviews help your fellow scientists make the right decisions. Thank you for your contribution.



Anti-CLDN6 Reference Antibody (IMAB027)

For Research Use Only. Not for use in diagnostic procedures.