

## Anti-CLDN6 Reference Antibody (DS-9606a)

Catalog Number: M08182-4

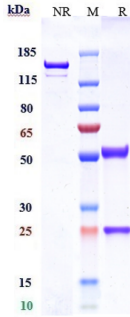
### Overview

Product Name	Anti-CLDN6 Reference Antibody (DS-9606a)
Reactive Species	Human
Description	Boster Bio Anti-CLDN6 Reference Antibody (DS-9606a) (Catalog # M08182-4). Tested in Flow Cytometry, ELISA, FTA. This antibody reacts with Human. Endotoxin: < 0.945EU/ug,determined by LAL method. Expression system: CHO Cell
Application	ELISA, Flow Cytometry, Functional Assay, Kinetics
Clonality	Monoclonal
Formulation	Purified monoclonal antibody supplied in PBS, pH6.0, without preservative.This antibody is purified through a protein A column.
Storage Instructions	Maintain refrigerated at 2-8°C for up to 2 weeks. For long-term storage, aliquot and store at -20°C to avoid repeated freeze-thaw cycles.
Uniprot ID	P56747

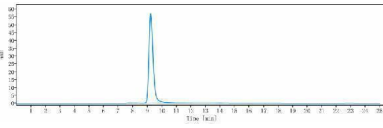
### Technical Details

Isotype	IgG1
Form	Liquid

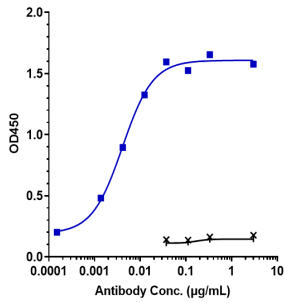
## Anti-CLDN6 Reference Antibody (DS-9606a) (M08182-4) Images



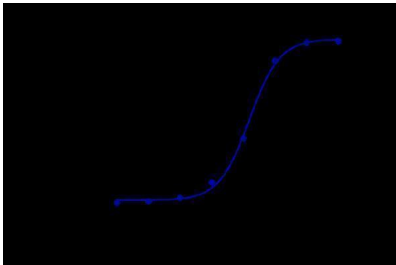
Anti-CLDN6 Reference Antibody (DS-9606a) on SDS-PAGE under reducing (R) condition. The gel was stained with Coomassie Blue. The purity of the protein is greater than 95%



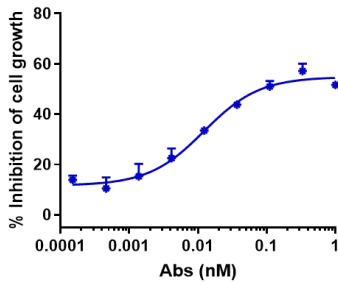
The purity of Anti-CLDN6 Reference Antibody (DS-9606a) is more than 99.37%



Immobilized human CLDN6 VLP Protein at 2 μg/mL can bind Anti-CLDN6 Reference Antibody (DS-9606a)

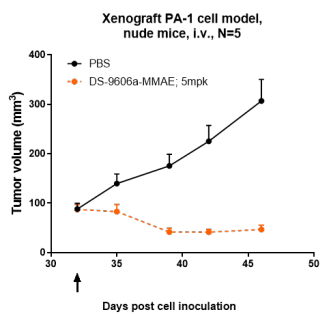


Human CLDN6 CHO cells were stained with Anti-CLDN6 Reference Antibody (DS-9606a) and negative control protein respectively



DS-9606a by huCLDN6-HEK293 increased with the increase of antibody concentration

DS-9606a inhibited the tumor growth of PA-1 on Balb/c nude mice. The result showed significant anti-tumor effects



## Submit a product review to Biocompare.com

Submit a review of this product to Biocompare.com to receive a \$20 Amazon.com giftcard! Your reviews help your fellow scientists make the right decisions. Thank you for your contribution.



Anti-CLDN6 Reference Antibody (DS-9606a)

For Research Use Only. Not for use in diagnostic procedures.