

Anti-NDUFA1 Antibody (Center)

Catalog Number: M08224

About NDUFA1

Accessory subunit of the mitochondrial membrane respiratory chain NADH dehydrogenase (Complex I), that is believed not to be involved in catalysis. Complex I functions in the transfer of electrons from NADH to the respiratory chain. The immediate electron acceptor for the enzyme is believed to be ubiquinone.

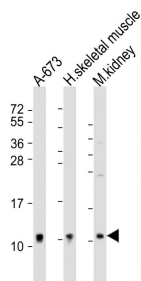
Overview

Product Name	Anti-NDUFA1 Antibody (Center)
Reactive Species	Human, Mouse
Description	Boster Bio Anti-NDUFA1 Antibody (Center) (Catalog # M08224). Tested in WB application(s). This antibody reacts with Human, Mouse.
Application	WB
Clonality	Polyclonal
Formulation	Purified polyclonal antibody supplied in PBS with 0.09% (W/V) sodium azide.
Storage Instructions	Maintain refrigerated at 2-8°C for up to 2 weeks. For long-term storage, store at -20°C in small aliquots to prevent freeze-thaw cycles.
Host	Rabbit
Uniprot ID	O15239

Technical Details

Immunogen	This NDUFA1 antibody is generated from a rabbit immunized with a KLH conjugated synthetic peptide between 26-59 amino acids from the Central region of human NDUFA1.
Predicted Reactive Species	Bovine, Rat
Isotype	Rabbit IgG
Purification	This antibody is purified through a protein A column, followed by peptide affinity purification.
Suggested Dilutions	WB: 1:2000

Anti-NDUFA1 Antibody (Center) (M08224) Images



All lanes : Anti-NDUFA1 Antibody (Center) at 1:2000 dilution
Lane 1: A-673 whole cell lysate
Lane 2: human skeletal muscle lysate
Lane 3: mouse kidney lysate
Lysates/proteins at 20 µg per lane. Secondary Goat Anti-Rabbit IgG, (H+L), Peroxidase conjugated at 1/10000 dilution. Predicted band size : 8 kDa
Blocking/Dilution buffer: 5% NFDN/TBST.

Submit a product review to Biocompare.com

Submit a review of this product to Biocompare.com to receive a \$20 Amazon.com giftcard! Your reviews help your fellow scientists make the right decisions. Thank you for your contribution.



Anti-NDUFA1 Antibody (Center)

For Research Use Only. Not for use in diagnostic procedures.