

Anti-HOXC11 Mouse Monoclonal Antibody [Clone ID: OTI3E10]

Catalog Number: M08258

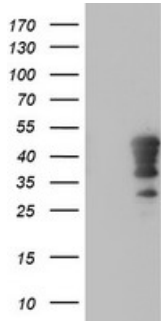
Overview

Product Name	Anti-HOXC11 Mouse Monoclonal Antibody [Clone ID: OTI3E10]
Reactive Species	Human, Mouse, Rat
Description	Boster Bio HOXC11 mouse monoclonal antibody, clone OTI3E10 (formerly 3E10). Catalog# M08258. Tested in FC, IF, IHC, WB. This antibody reacts with Human, Mouse, Rat.
Application	Flow Cytometry, IF, IHC, WB
Clonality	Monoclonal OTI3E10
Formulation	PBS (pH 7.3) containing 1% stabilizing protein, 50% glycerol and 0.02% sodium azide. This antibody is supplied in a stabilized formulation. Compatibility with conjugation reactions depends on the chemistry of the conjugation method used. For conjugation methods that are not compatible with the stabilizing components present in this formulation, a carrier-free antibody format is required.
Storage Instructions	Store at -20°C as received.
Host	Mouse
Uniprot ID	O43248

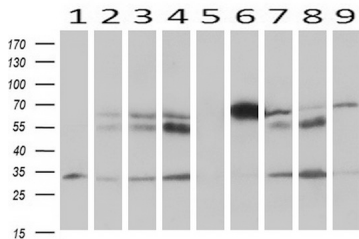
Technical Details

Immunogen	Human recombinant protein fragment corresponding to amino acids 1-304 of human HOXC11 (NP_055027) produced in E.coli.
Isotype	IgG1
Concentration	0.44 mg/ml
Purification	Purified from mouse ascites fluids or tissue culture supernatant by affinity chromatography (protein A/G)
Suggested Dilutions	WB 1:500~2000 IHC 1:150 IF 1:100 Flow Cytometry 1:100

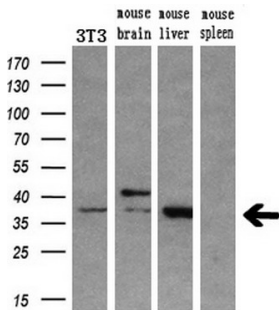
Anti-HOXC11 Mouse Monoclonal Antibody [Clone ID: OTI3E10] (M08258) Images



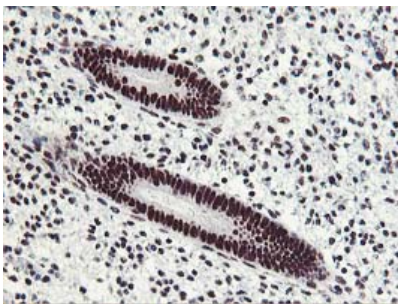
HEK293T cells were transfected with the pCMV6-ENTRY control (Left lane) or pCMV6-ENTRY HOXC11 (Right lane) cDNA for 48 hrs and lysed. Equivalent amounts of cell lysates (5 ug per lane) were separated by SDS-PAGE and immunoblotted with anti-HOXC11.



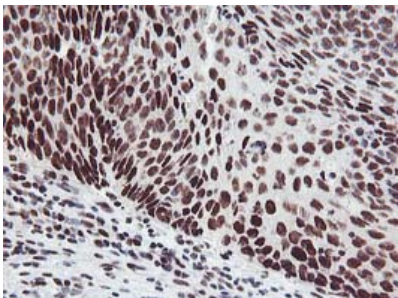
Western blot analysis of extracts (10ug) from 9 Human tissue by using anti-HOXC11 monoclonal antibody at 1:200 (1: Testis; 2: Omentum; 3: Uterus; 4: Breast; 5: Brain; 6: Liver; 7: Ovary; 8: Thyroid gland; 9: colon).



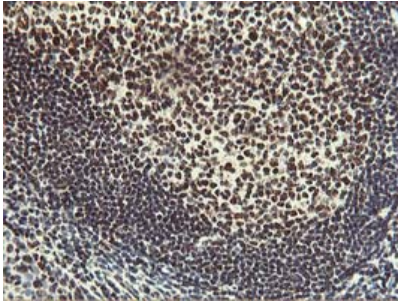
Western blot analysis of extracts (10ug) from a mouse cell line and 3 different mouse tissues by using anti-HOXC11 monoclonal antibody (1:200).



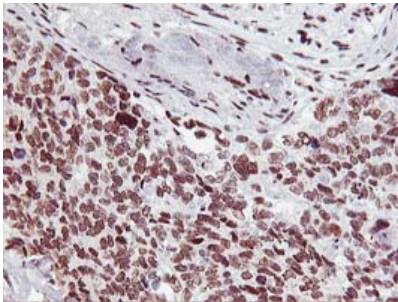
Immunohistochemical staining of paraffin-embedded Human endometrium tissue within the normal limits using anti-HOXC11 mouse monoclonal antibody. (Heat-induced epitope retrieval by 10mM citric buffer)



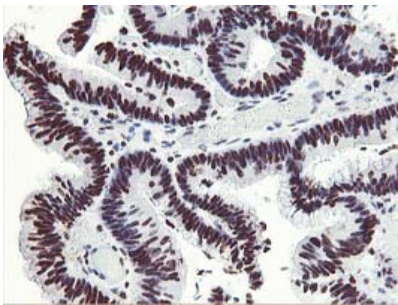
Immunohistochemical staining of paraffin-embedded Carcinoma of Human bladder tissue using anti-HOXC11 mouse monoclonal antibody. (Heat-induced epitope retrieval by 10mM citric buffer)



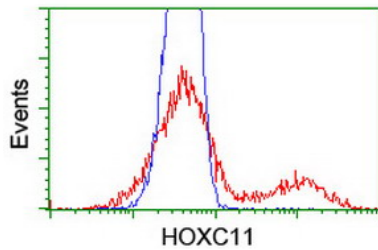
Immunohistochemical staining of paraffin-embedded Human tonsil within the normal limits using anti-HOXC11 mouse monoclonal antibody. (Heat-induced epitope retrieval by 10mM citric buffer)



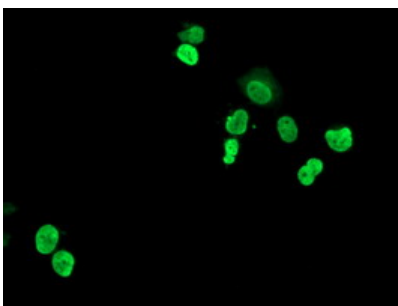
Immunohistochemical staining of paraffin-embedded Adenocarcinoma of Human breast tissue using anti-HOXC11 mouse monoclonal antibody. (Heat-induced epitope retrieval by 10mM citric buffer)



Immunohistochemical staining of paraffin-embedded Adenocarcinoma of Human colon tissue using anti-HOXC11 mouse monoclonal antibody. (Heat-induced epitope retrieval by 10mM citric buffer)



HEK293T cells transfected with either HOXC11 (Myc-DDK-tagged) overexpress plasmid (Red) or empty vector control plasmid (Blue) were immunostained by anti-HOXC11 antibody (M08258)



Anti-HOXC11 mouse monoclonal antibody (M08258) immunofluorescent staining of COS7 cells transiently transfected by pCMV6-ENTRY HOXC11.

Submit a product review to [Biocompare.com](https://www.biocompare.com)

Submit a review of this product to [Biocompare.com](https://www.biocompare.com) to receive a \$20 Amazon.com giftcard! Your



reviews help your fellow scientists make the right decisions. Thank you for your contribution.

Anti-HOXC11 Mouse Monoclonal Antibody [Clone ID: OT13E10]

For Research Use Only. Not for use in diagnostic procedures.