

## Anti-Laminin beta 2 (LAMB2) Mouse Monoclonal Antibody [Clone ID: OTI3B4]

Catalog Number: M08306

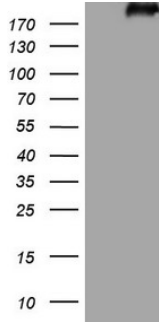
### Overview

|                      |  |
|----------------------|--|
| Product Name         | Anti-Laminin beta 2 (LAMB2) Mouse Monoclonal Antibody [Clone ID: OTI3B4]   |
| Reactive Species     | Human, Mouse, Rat  |
| Description          | Boster Bio LAMB2 mouse monoclonal antibody, clone OTI3B4 (formerly 3B4). Catalog# M08306. Tested in IHC, WB. This antibody reacts with Human, Mouse, Rat.  |
| Application          | IHC, WB  |
| Clonality            | Monoclonal OTI3B4  |
| Formulation          | PBS (pH 7.3) containing 1% stabilizing protein, 50% glycerol and 0.02% sodium azide. This antibody is supplied in a stabilized formulation. Compatibility with conjugation reactions depends on the chemistry of the conjugation method used. For conjugation methods that are not compatible with the stabilizing components present in this formulation, a carrier-free antibody format is required. |
| Storage Instructions | Store at -20°C as received.  |
| Host                 | Mouse  |
| Uniprot ID           | P55268   |

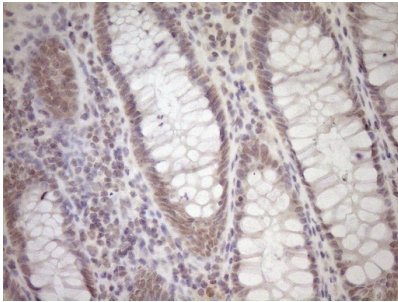
### Technical Details

|                     |  |
|---------------------|--|
| Immunogen           | Human recombinant protein fragment corresponding to amino acids 314-561 of human LAMB2 (NP_002283) produced in E.coli. |
| Isotype             | IgG1   |
| Concentration       | 1 mg/ml  |
| Purification        | Purified from mouse ascites fluids or tissue culture supernatant by affinity chromatography (protein A/G)              |
| Suggested Dilutions | WB 1:200<br>IHC 1:150  |

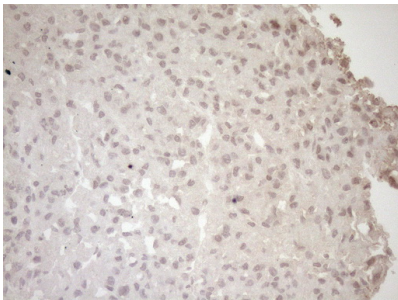
## Anti-Laminin beta 2 (LAMB2) Mouse Monoclonal Antibody [Clone ID: OTI3B4] (M08306) Images



HEK293T cells were transfected with the pCMV6-ENTRY control (Left lane) or pCMV6-ENTRY LAMB2 (Right lane) cDNA for 48 hrs and lysed. Equivalent amounts of cell lysates (5 ug per lane) were separated by SDS-PAGE and immunoblotted with anti-LAMB2 (1:200).



Immunohistochemical staining of paraffin-embedded Human colon tissue within the normal limits using anti-LAMB2 mouse monoclonal antibody. (Heat-induced epitope retrieval by 1mM EDTA in 10mM Tris buffer (pH8.5) at 120°C for 3min)



Immunohistochemical staining of paraffin-embedded Human liver tissue within the normal limits using anti-LAMB2 mouse monoclonal antibody. (Heat-induced epitope retrieval by 1mM EDTA in 10mM Tris buffer (pH8.5) at 120°C for 3min)

### Submit a product review to [Biocompare.com](https://www.biocompare.com)

Submit a review of this product to [Biocompare.com](https://www.biocompare.com) to receive a \$20 Amazon.com giftcard! Your reviews help your fellow scientists make the right decisions. Thank you for your contribution.



Anti-Laminin beta 2 (LAMB2) Mouse Monoclonal Antibody [Clone ID: OTI3B4]

For Research Use Only. Not for use in diagnostic procedures.