

Anti-TFIIF (GTF2F1) Mouse Monoclonal Antibody [Clone ID: OTI2H3]

Catalog Number: M08313-1

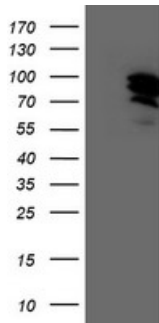
Overview

Product Name	Anti-TFIIF (GTF2F1) Mouse Monoclonal Antibody [Clone ID: OTI2H3]
Reactive Species	Human, Monkey, Mouse, Rat
Description	Boster Bio GTF2F1 mouse monoclonal antibody, clone OTI2H3 (formerly 2H3). Catalog# M08313-1. Tested in FC, IF, WB. This antibody reacts with Human, Monkey, Mouse, Rat.
Application	Flow Cytometry, IF, WB
Clonality	Monoclonal OTI2H3
Formulation	PBS (PH 7.3) containing 1% BSA, 50% glycerol and 0.02% sodium azide.
Storage Instructions	Store at -20°C as received.
Host	Mouse
Uniprot ID	P35269

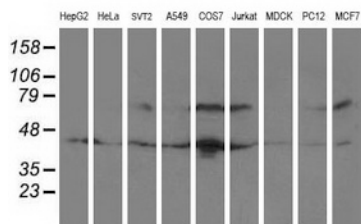
Technical Details

Immunogen	Full length human recombinant protein of human GTF2F1 (NP_002087) produced in HEK293T cell.
Isotype	IgG1
Concentration	0.65 mg/ml
Purification	Purified from mouse ascites fluids or tissue culture supernatant by affinity chromatography (protein A/G)
Suggested Dilutions	Dilute the sample so that the expected range of concentrations fall within the detection range of this kit. If the expected range of concentration is unknown, a pilot test should be conducted to decide the optimal dilution ratio for your samples. Some PubMed article(s) citing the expression level of this target are as follows:

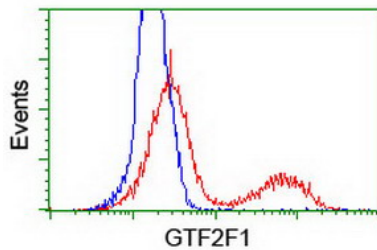
Anti-TFIIF (GTF2F1) Mouse Monoclonal Antibody [Clone ID: OTI2H3] (M08313-1) Images



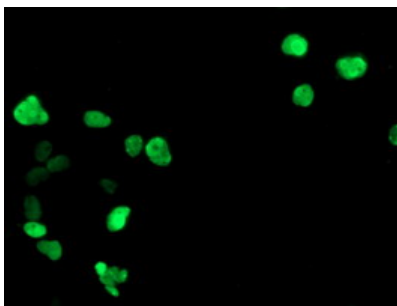
HEK293T cells were transfected with the pCMV6-ENTRY control (Left lane) or pCMV6-ENTRY GTF2F1 (Right lane) cDNA for 48 hrs and lysed. Equivalent amounts of cell lysates (5 ug per lane) were separated by SDS-PAGE and immunoblotted with anti-GTF2F1.



Western blot analysis of extracts (35ug) from 9 different cell lines by using anti-GTF2F1 monoclonal antibody.



HEK293T cells transfected with either GTF2F1 (Myc-DDK-tagged) overexpress plasmid (Red) or empty vector control plasmid (Blue) were immunostained by anti-GTF2F1 antibody (M08313-1)



Anti-GTF2F1 mouse monoclonal antibody (M08313-1) immunofluorescent staining of COS7 cells transiently transfected by pCMV6-ENTRY GTF2F1.

Submit a product review to Biocompare.com

Submit a review of this product to Biocompare.com to receive a \$20 Amazon.com giftcard! Your reviews help your fellow scientists make the right decisions. Thank you for your contribution.



Anti-TFIIF (GTF2F1) Mouse Monoclonal Antibody [Clone ID: OTI2H3]