

Anti-SH3PXD2B Antibody (C-Term)

Catalog Number: M08324

About SH3PXD2B

Adapter protein involved in invadopodia and podosome formation and extracellular matrix degradation. Binds matrix metalloproteinases (ADAMs), NADPH oxidases (NOXs) and phosphoinositides. Acts as an organizer protein that allows NOX1- or NOX3-dependent reactive oxygen species (ROS) generation and ROS localization. Plays a role in mitotic clonal expansion during the immediate early stage of adipocyte differentiation (By similarity).

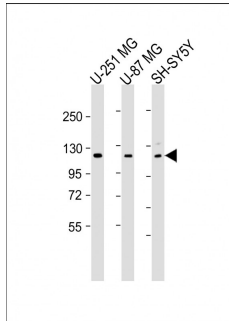
Overview

Product Name	Anti-SH3PXD2B Antibody (C-Term)
Reactive Species	Human
Description	Boster Bio Anti-SH3PXD2B Antibody (C-Term) (Catalog # M08324). Tested in WB, Flow Cytometry application(s). This antibody reacts with Human.
Application	Flow Cytometry, WB
Clonality	Polyclonal
Formulation	Purified polyclonal antibody supplied in PBS with 0.09% (W/V) sodium azide.
Storage Instructions	Maintain refrigerated at 2-8°C for up to 2 weeks. For long-term storage, store at -20°C in small aliquots to prevent freeze-thaw cycles.
Host	Rabbit
Uniprot ID	A1X283

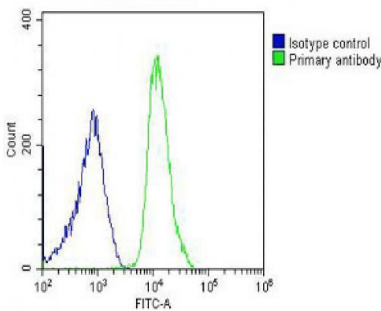
Technical Details

Immunogen	This SH3PXD2B antibody is generated from a rabbit immunized with a KLH conjugated synthetic peptide between 596-628 amino acids from human SH3PXD2B.
Predicted Reactive Species	Bovine, Rat
Isotype	Rabbit IgG
Purification	This antibody is purified through a protein A column, followed by peptide affinity purification.
Suggested Dilutions	WB: 1:2000 FC: 1:25

Anti-SH3PXD2B Antibody (C-Term) (M08324) Images



All lanes : Anti-SH3PXD2B Antibody (C-Term) at 1:2000 dilution
Lane 1: U-251 MG whole cell lysate
Lane 2: U-87 MG whole cell lysate
Lane 3: SH-SY5Y whole cell lysate
Lysates/proteins at 20 µg per lane. Secondary Goat Anti-Rabbit IgG, (H+L), Peroxidase conjugated at 1/10000 dilution. Predicted band size : 102 kDa
Blocking/Dilution buffer: 5% NFDM/TBST.



Overlay histogram showing U-20S cells stained with M08324 (green line). The cells were fixed with 2% paraformaldehyde (10 min) and then permeabilized with 90% methanol for 10 min. The cells were then incubated in 2% bovine serum albumin to block non-specific protein-protein interactions followed by the antibody (M08324, 1:25 dilution) for 60 min at 37°C. The secondary antibody used was Goat-Anti-Rabbit IgG, DyLight® 488 Conjugated Highly Cross-Adsorbed at 1/200 dilution for 40 min at 37°C. Isotype control antibody (blue line) was rabbit IgG (1µg/1x10⁶ cells) used under the same conditions. Acquisition of >10, 000 events was performed.

Submit a product review to [Biocompare.com](https://www.biocompare.com)

Submit a review of this product to [Biocompare.com](https://www.biocompare.com) to receive a \$20 Amazon.com giftcard! Your reviews help your fellow scientists make the right decisions. Thank you for your contribution.



Anti-SH3PXD2B Antibody (C-Term)

For Research Use Only. Not for use in diagnostic procedures.