

Anti-Human IgG3 IGHG3 Rabbit Monoclonal Antibody, Clone#RM119

Catalog Number: M08374-1

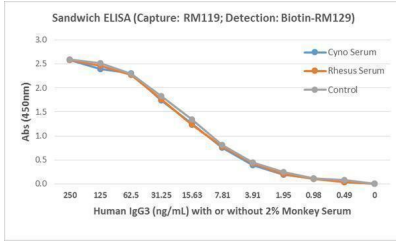
Overview

Product Name	Anti-Human IgG3 IGHG3 Rabbit Monoclonal Antibody, Clone#RM119
Reactive Species	Human
Description	Boster Bio Anti-Human IgG3 IGHG3 Rabbit Monoclonal Antibody, Clone#RM119 (Catalog # M08374-1). Tested in ELISA, ICC, IHC applications. This antibody reacts with Human.
Application	ELISA, IHC, ICC
Clonality	Monoclonal RM119
Formulation	50% Glycerol/PBS with 1% stabilizing protein and 0.09% sodium azide This antibody is supplied in a stabilized formulation. Compatibility with conjugation reactions depends on the chemistry of the conjugation method used. For conjugation methods that are not compatible with the stabilizing components present in this formulation, a carrier-free antibody format is required.
Storage Instructions	Store at -20°C for one year. Avoid repeated freeze-thaw cycles.
Host	Rabbit
Uniprot ID	P01860

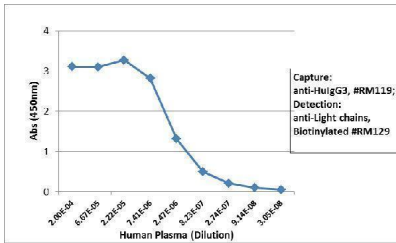
Technical Details

Immunogen	Human IgG3
Cross Reactivity	Reacts to the heavy chain of human IgG3, RM119 does not cross-react to any other IgG subclasses (IgG1, IgG2, IgG4), and shows no cross-reactivity IgM, IgA, IgD, IgE. RM119 does not react to monkey (Cyno or Rhesus) IgG, mouse IgG, rat IgG, or goat IgG.
Isotype	Rabbit IgG
Form	Liquid
Concentration	1 mg/mL
Purification	Protein A affinity purified from an animal origin-free culture supernatant
Suggested Dilutions	ELISA: 50ng/well – 200ng/well (for Capture) 0.05ug/mL – 0.2ug/mL (for Detection) Immunocytochemistry (ICC): 0.5ug/mL-2ug/mL Immunohistochemistry (IHC): 0.5ug/mL-2ug/mL.

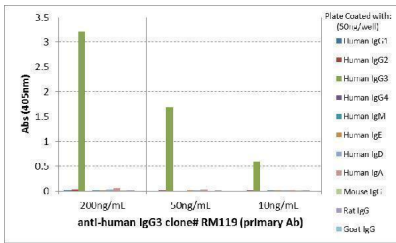
Anti-Human IgG3 IGHG3 Rabbit Monoclonal Antibody, Clone#RM119 (M08374-1) Images



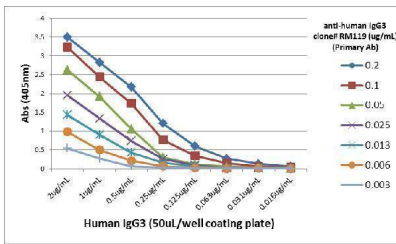
ELISA result showing specificity Detection of human IgG3 in monkey serum. Sandwich ELISA using RM119 as the capture antibody, and biotinylated anti-human light chains (or) antibody RM129 as the detection antibody, followed by a HRP conjugated streptavidin.



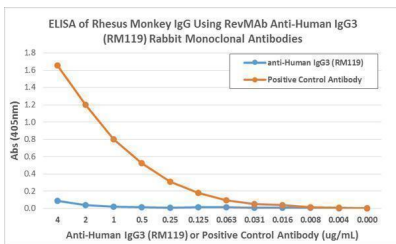
ELISA result showing specificity Sandwich ELISA using RM119 as the capture antibody (100ng/well), and Biotinylated anti-human light chains (+) antibody RM129 as the detection antibody, followed by a HRP conjugated streptavidin.



ELISA result showing specificity ELISA of human immunoglobulins shows RM119 only reacted to human IgG3. No cross reactivity with Human IgG1, IgG2, IgG4, IgE, IgD, IgA, mouse IgG, rat IgG, or goat IgG. The plate was coated with 50 ng/well of different immunoglobulins. 200 ng/mL, 50 ng/mL, or 10 ng/mL of RM119 was used as the primary antibody. An alkaline phosphatase conjugated anti-rabbit IgG as the secondary antibody

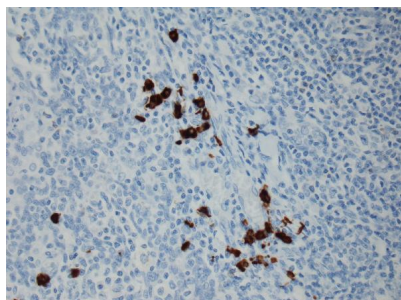
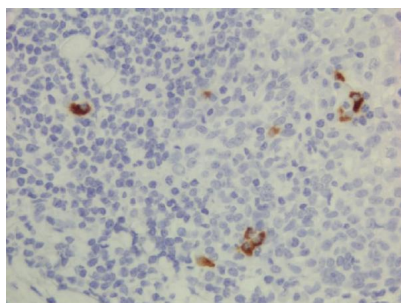


ELISA result showing specificity A titer ELISA using RM119. The plate was coated with different amounts of human IgG3. A serial dilution of RM119 was used as the primary antibody. An alkaline phosphatase conjugated anti-rabbit IgG as the secondary antibody.



ELISA result showing specificity ELISA showing RM119 does not react to monkey IgG. The plate was coated with Rhesus monkey IgG. A serial dilution of RM119 and a monkey IgG binding antibody (positive control) was used as the detection antibody.

IHC result Immunohistochemical staining of formalin fixed and paraffin embedded human lymphoid tissue section using anti-human IgG3 rabbit monoclonal antibody (Clone RM119).



IHC result
Immunohistochemical staining of FFPE Tonsil tissue sections using Anti-Human IgG3 antibody RM119 at a 1:2000 dilution.

Submit a product review to [Biocompare.com](https://www.biocompare.com)

Submit a review of this product to [Biocompare.com](https://www.biocompare.com) to receive a \$20 Amazon.com giftcard! Your reviews help your fellow scientists make the right decisions. Thank you for your contribution.



Anti-Human IgG3 IGHG3 Rabbit Monoclonal Antibody, Clone#RM119

For Research Use Only. Not for use in diagnostic procedures.