

Anti-Claudin 11 CLDN11 Monoclonal Antibody

Catalog Number: M08381

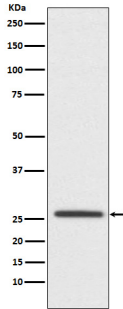
Overview

Product Name	Anti-Claudin 11 CLDN11 Monoclonal Antibody
Reactive Species	Human, Mouse, Rat
Description	Boster Bio Anti-Claudin 11 CLDN11 Monoclonal Antibody catalog # M08381. Tested in WB, Flow Cytometry applications. This antibody reacts with Human, Mouse, Rat.
Application	Flow Cytometry, WB
Clonality	Monoclonal AEDI-3
Formulation	Rabbit IgG in stabilizing components, phosphate buffered saline, pH 7.4, 150mM NaCl, 0.02% sodium azide and 50% glycerol. *This antibody is supplied in a stabilized formulation. Compatibility with conjugation reactions depends on the chemistry of the conjugation method used. For conjugation methods that are not compatible with the stabilizing components present in this formulation, a carrier-free antibody format is required.
Storage Instructions	Store at -20°C for one year. For short term storage and frequent use, store at 4°C for up to one month. Avoid repeated freeze-thaw cycles.
Host	Rabbit
Uniprot ID	O75508

Technical Details

Immunogen	A synthesized peptide derived from human Oligodendrocyte Specific Protein
Isotype	Rabbit IgG
Form	Liquid
Concentration	0.5mg/ml
Purification	Affinity-chromatography
Suggested Dilutions	WB 1:500-2000 FC 1:100

Anti-Claudin 11 CLDN11 Monoclonal Antibody (M08381) Images



Western blot analysis of Oligodendrocyte Specific Protein expression in SH-SY5Y cell lysate.

1 Publications Citing This Product

1. PubMed ID: -, Ling-Zi Xia,Min Yang,Miao He,Ming-Zhe Jiang,Chang Qin,Zhi-Jun Wei,Hai-Tao Gao,Food emulsifier glycerin monostearate aggravates phthalates' testicular toxicity by disrupting tight junctions' barrier function in rats,Food Quality and Safety,2021,;fyab002,ht

Visit bosterbio.com/anti-claudin-11-antibody-m08381-boster.html to see all 1 publications.

Submit a product review to Biocompare.com

Submit a review of this product to Biocompare.com to receive a \$20 Amazon.com giftcard! Your reviews help your fellow scientists make the right decisions. Thank you for your contribution.



Anti-Claudin 11 CLDN11 Monoclonal Antibody

For Research Use Only. Not for use in diagnostic procedures.