

Anti-alpha Tubulin TUBA1B Rabbit Monoclonal Antibody

Catalog Number: M08382

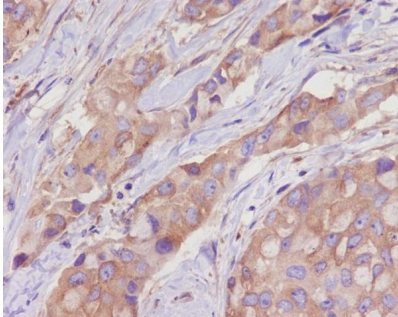
Overview

Product Name	Anti-alpha Tubulin TUBA1B Rabbit Monoclonal Antibody
Reactive Species	Human, Mouse, Rat
Description	Boster Bio Anti-alpha Tubulin TUBA1B Rabbit Monoclonal Antibody catalog # M08382. Tested in WB, IHC, ICC/IF, IP, Flow Cytometry applications. This antibody reacts with Human, Mouse, Rat.
Application	Flow Cytometry, IP, IF, IHC, ICC, WB
Clonality	Monoclonal CH-20
Formulation	Rabbit IgG in stabilizing components, phosphate buffered saline, pH 7.4, 150mM NaCl, 0.02% sodium azide and 50% glycerol. *This antibody is supplied in a stabilized formulation. Compatibility with conjugation reactions depends on the chemistry of the conjugation method used. For conjugation methods that are not compatible with the stabilizing components present in this formulation, a carrier-free antibody format is required.
Storage Instructions	Store at -20°C for one year. For short term storage and frequent use, store at 4°C for up to one month. Avoid repeated freeze-thaw cycles.
Host	Rabbit
Uniprot ID	P68366

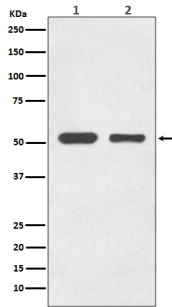
Technical Details

Immunogen	A synthesized peptide derived from human alpha Tubulin
Isotype	Rabbit IgG
Form	Liquid
Concentration	0.5mg/ml
Purification	Affinity-chromatography
Suggested Dilutions	WB 1:1000-1:10000 IHC 1:50-1:200 ICC/IF 1:50-1:200 IP 1:50 FC 1:50

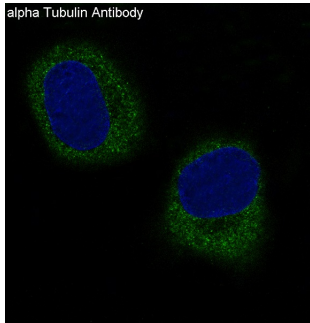
Anti-alpha Tubulin TUBA1B Rabbit Monoclonal Antibody (M08382) Images



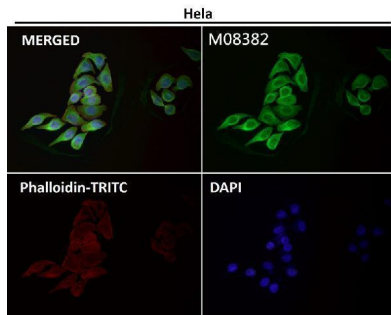
Immunohistochemical analysis of paraffin-embedded human breast cancer, using alpha Tubulin Antibody.



Western blot analysis of alpha Tubulin in (1) HeLa cell lysate; (2) HepG2 cell lysate; (3) NIH/3T3 cell lysate; (4) Mouse brain lysate; (5) C6 cell lysate.

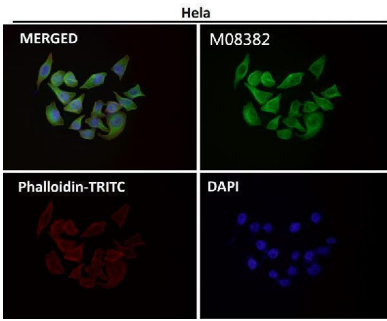


Immunofluorescent analysis of HeLa cells, using alpha Tubulin Antibody .

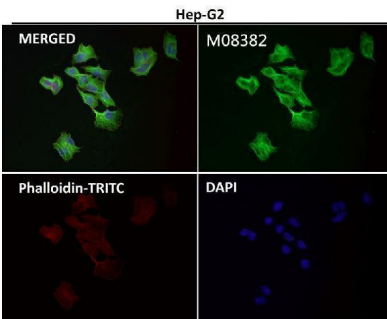
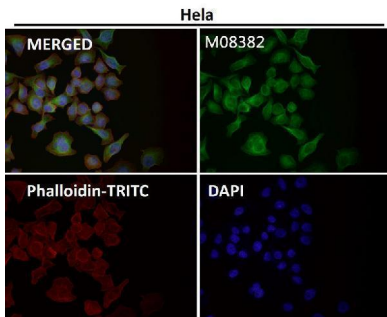


Immunofluorescent analysis using the Antibody at 1:50 dilution.

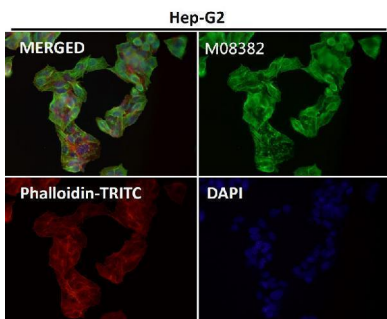
Immunofluorescent analysis using the Antibody at 1:150 dilution.



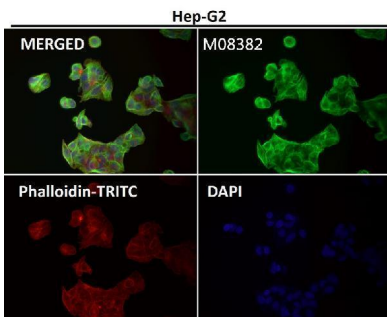
Immunofluorescent analysis using the Antibody at 1:500 dilution.



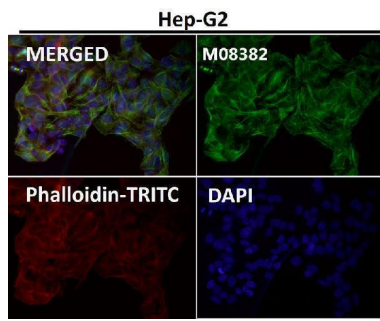
Immunofluorescent analysis using the Antibody at 1:50 dilution.



Immunofluorescent analysis using the Antibody at 1:50 dilution.



Immunofluorescent analysis using the Antibody at 1:150 dilution.



Immunofluorescent analysis using the Antibody at 1:500 dilution.

18 Publications Citing This Product

1. PubMed ID: 33456993, Zhu J,Lv Y,Hao J,Shi T,Wang S,Wang K,Fan X,Guo Y,Zhang J,Li J.N-myc downstream-regulated gene 2 promotes the protein stability of estrogen receptor beta via inhibition of ubiquitin-protein ligase E3A to suppress colorectal cancer. *J Gastrointest Oncol.*2020
2. PubMed ID: 32518521, Yuan Y,Li B,Kuang Y,Ni S,Zhuge A,Yang J,Lv L,Gu S,Yan R,Li Y,Wang K,Yang L,Zhu X,Wu J,Bian X,Li L. The fiber metabolite butyrate reduces gp130 by targeting TRAF5 in colorectal cancer cells. *Cancer Cell Int.*2020 Jun 3;20:212.doi:10. 1186/s12935-020-01305-9
3. PubMed ID: 32831652, Ni S,Kuang Y,Yuan Y,Yu B. Mitochondrion-mediated iron accumulation promotes carcinogenesis and Warburg effect through reactive oxygen species in osteosarcoma. *Cancer Cell Int.*2020 Aug 18;20:399. doi:10.1186/s12935-020-01494-3.PMID:32831652;PMCID:PMC743701

Visit bosterbio.com/anti-alpha-tubulin-rabbit-monoclonal-antibody-m08382-boster.html to see all 18 publications.

Submit a product review to Biocompare.com

Submit a review of this product to Biocompare.com to receive a \$20 Amazon.com giftcard! Your reviews help your fellow scientists make the right decisions. Thank you for your contribution.



Anti-alpha Tubulin TUBA1B Rabbit Monoclonal Antibody

For Research Use Only. Not for use in diagnostic procedures.