

Anti-alpha Tubulin TUBA1B Rabbit Monoclonal Antibody

Catalog Number: M08382-1

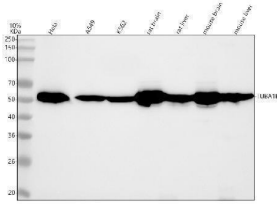
Overview

| | |
|----------------------|--|
| Product Name | Anti-alpha Tubulin TUBA1B Rabbit Monoclonal Antibody |
| Reactive Species | Human, Mouse, Rat |
| Description | Boster Bio Anti-alpha Tubulin TUBA1B Rabbit Monoclonal Antibody catalog # M08382-1. Tested in WB, IHC, ICC/IF, IP, Flow Cytometry applications. This antibody reacts with Human, Mouse, Rat. |
| Application | Flow Cytometry, IP, IF, IHC, ICC, WB |
| Clonality | Monoclonal CG-20 |
| Formulation | Rabbit IgG in stabilizing components, phosphate buffered saline, pH 7.4, 150mM NaCl, 0.02% sodium azide and 50% glycerol. *This antibody is supplied in a stabilized formulation. Compatibility with conjugation reactions depends on the chemistry of the conjugation method used. For conjugation methods that are not compatible with the stabilizing components present in this formulation, a carrier-free antibody format is required. |
| Storage Instructions | Store at -20°C for one year. For short term storage and frequent use, store at 4°C for up to one month. Avoid repeated freeze-thaw cycles. |
| Host | Rabbit |
| Uniprot ID | P68366 |

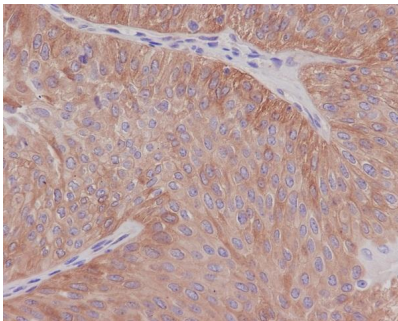
Technical Details

| | |
|---------------------|---|
| Immunogen | A synthesized peptide derived from human alpha Tubulin |
| Isotype | Rabbit IgG |
| Form | Liquid |
| Concentration | 0.5mg/ml |
| Purification | Affinity-chromatography |
| Suggested Dilutions | WB 1:1000-5000 IHC 1:50-200 ICC/IF 1:50-200 IP 1:20 FC 1:20 |

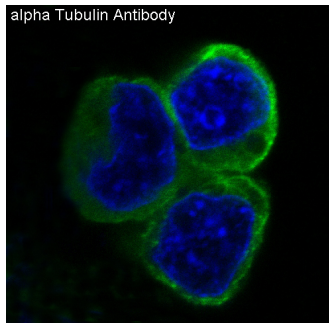
Anti-alpha Tubulin TUBA1B Rabbit Monoclonal Antibody (M08382-1) Images



Western blot analysis of Alpha Tubulin using anti-Alpha Tubulin antibody (M08382-1). Electrophoresis was performed on a 5-20% SDS-PAGE gel at 70V (Stacking gel) / 90V (Resolving gel) for 2-3 hours. The sample well of each lane was loaded with 30 ug of sample under reducing conditions. Lane 1: human Hela whole cell lysates, Lane 2: human A549 whole cell lysates, Lane 3: human K562 whole cell lysates, Lane 4: rat brain tissue lysates, Lane 5: rat liver tissue lysates, Lane 6: mouse brain tissue lysates, Lane 7: mouse liver tissue lysates. After electrophoresis, proteins were transferred to a nitrocellulose membrane at 150 mA for 50-90 minutes. Blocked the membrane with 5% non-fat milk/TBS for 1.5 hour at RT. The membrane was incubated with rabbit anti-Alpha Tubulin antigen affinity purified monoclonal antibody (Catalog # M08382-1) at 1:1000 overnight at 4°C, then washed with TBS-0.1%Tween 3 times with 5 minutes each and probed with a goat anti-rabbit IgG-HRP secondary antibody at a dilution of 1:500 for 1.5 hour at RT. The signal is developed using an Enhanced Chemiluminescent detection (ECL) kit (Catalog # EK1002) with Tanon 5200 system. A specific band was detected for Alpha Tubulin at approximately 55 kDa. The expected band size for Alpha Tubulin is at 55 kDa.



Immunohistochemical analysis of paraffin-embedded human bladder, using alpha Tubulin Antibody.



Immunofluorescent analysis of 293 cells, using alpha Tubulin Antibody .

14 Publications Citing This Product

1. PubMed ID: 26269769, Endogenous Nodal promotes melanoma undergoing epithelial-mesenchymal transition via Snail and Slug in vitro and in vivo.
2. PubMed ID: 18958584, Prohibitin protects against oxidative stress-induced cell injury in cultured neonatal cardiomyocyte

3. PubMed ID: 19412742, NGFI-B targets mitochondria and induces cardiomyocyte apoptosis in restraint-stressed rats by mediating energy metabolism disorder

Visit bosterbio.com/anti-alpha-tubulin-rabbit-monoclonal-antibody-m08382-1-boster.html to see all 14 publications.

Submit a product review to Biocompare.com

Submit a review of this product to Biocompare.com to receive a \$20 Amazon.com giftcard! Your reviews help your fellow scientists make the right decisions. Thank you for your contribution.



Anti-alpha Tubulin TUBA1B Rabbit Monoclonal Antibody

For Research Use Only. Not for use in diagnostic procedures.