

## Anti-alpha -Tubulin TUBA1B Rabbit Monoclonal Antibody, Clone#RM113

Catalog Number: M08382-2

### Overview

Product Name	Anti-alpha -Tubulin TUBA1B Rabbit Monoclonal Antibody, Clone#RM113
Reactive Species	All species
Description	Boster Bio Anti-alpha -Tubulin TUBA1B Rabbit Monoclonal Antibody, Clone#RM113 (Catalog # M08382-2). Tested in WB, IP, ChIP, ICC, IHC applications. This antibody reacts with All species.
Application	ChIP, IP, IHC, ICC, WB
Clonality	Monoclonal RM113
Formulation	50% Glycerol/PBS with 1% BSA and 0.09% sodium azide
Storage Instructions	Store at -20°C for one year. Avoid repeated freeze-thaw cycles.
Host	Rabbit
Uniprot ID	P68363

### Technical Details

Immunogen	A peptide corresponding to the C-terminus of alpha-Tubulin
Cross Reactivity	This antibody reacts to alpha-Tubulin, including Tubulin alpha-1A chain and Tubulin alpha-1B chain.
Isotype	Rabbit IgG
Form	Liquid
Concentration	0.5-1mg/ml, actual concentration vary by lot. Use suggested dilution ratio to decide dilution procedure.
Purification	Protein A affinity purified from an animal origin-free culture supernatant
Suggested Dilutions	<p>Dilute the sample so that the expected range of concentrations fall within the detection range of this kit.</p> <p>If the expected range of concentration is unknown, a pilot test should be conducted to decide the optimal dilution ratio for your samples.</p> <p>Some PubMed article(s) citing the expression level of this target are as follows:</p> <p>Boster Bio's internal QC testing used:</p> <p>Western Blot (WB): 1:1000 dilution</p> <p>Immunoprecipitation (IP): 1:200 dilution</p> <p>Chromatin IP (ChIP): 1:200 dilution</p> <p>Immunocytochemistry (ICC): 1:200 dilution</p> <p>Immunohistochemistry (IHC): 1:200 dilution.</p>



## Anti-alpha -Tubulin TUBA1B Rabbit Monoclonal Antibody, Clone#RM113 (M08382-2) Images

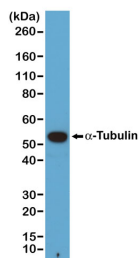


Figure 1. Western Blotting result  
Western blot of A431 cells, using Clone RM113 at 1/1000 dilution. A -Tubulin band showed at the predicted MW (~50 kDa).

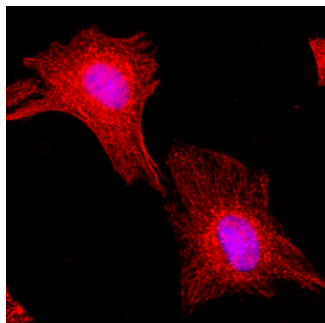


Figure 2. ICC result  
Immunocytochemical staining of HeLa cells, using Anti-Tubulin Clone RM113 at 1/200 dilution (red). Nuclei have been labeled with DAPI (blue).

## 16 Publications Citing This Product

1. PubMed ID: 32518521, Yuan Y, Li B, Kuang Y, Ni S, Zhuge A, Yang J, Lv L, Gu S, Yan R, Li Y, Wang K, Yang L, Zhu X, Wu J, Bian X, Li L. The fiber metabolite butyrate reduces gp130 by targeting TRAF5 in colorectal cancer cells. *Cancer Cell Int.* 2020 Jun 3;20:212. doi:10.1186/s12935-020-01305-9
2. PubMed ID: 32831652, Ni S, Kuang Y, Yuan Y, Yu B. Mitochondrion-mediated iron accumulation promotes carcinogenesis and Warburg effect through reactive oxygen species in osteosarcoma. *Cancer Cell Int.* 2020 Aug 18;20:399. doi:10.1186/s12935-020-01494-3. PMID:32831652; PMCID:PMC743701
3. PubMed ID: 26269769, Endogenous Nodal promotes melanoma undergoing epithelial-mesenchymal transition via Snail and Slug in vitro and in vivo.

Visit [bosterbio.com/anti-alpha-tubulin-rabbit-monoclonal-antibody-clone-rm113-m08382-2-boster.html](https://bosterbio.com/anti-alpha-tubulin-rabbit-monoclonal-antibody-clone-rm113-m08382-2-boster.html) to see all 16 publications.

## Submit a product review to Biocompare.com

Submit a review of this product to Biocompare.com to receive a \$20 Amazon.com giftcard! Your reviews help your fellow scientists make the right decisions. Thank you for your contribution.



Anti-alpha -Tubulin TUBA1B Rabbit Monoclonal Antibody, Clone#RM113