

Anti-Acetyl-alpha-Tubulin (Lys40) TUBA1B Rabbit Monoclonal Antibody, Clone#RM318

Catalog Number: M08382-3

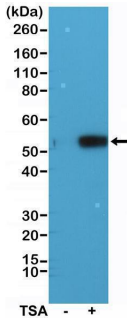
Overview

Product Name	Anti-Acetyl-alpha-Tubulin (Lys40) TUBA1B Rabbit Monoclonal Antibody, Clone#RM318
Reactive Species	Vertebrates
Description	Boster Bio Anti-Acetyl-alpha-Tubulin (Lys40) TUBA1B Rabbit Monoclonal Antibody, Clone#RM318 (Catalog # M08382-3). Tested in IHC, WB applications. This antibody reacts with Vertebrates.
Application	IHC, WB
Clonality	Monoclonal RM318
Formulation	50% Glycerol/PBS with 1% stabilizing protein and 0.09% sodium azide This antibody is supplied in a stabilized formulation. Compatibility with conjugation reactions depends on the chemistry of the conjugation method used. For conjugation methods that are not compatible with the stabilizing components present in this formulation, a carrier-free antibody format is required.
Storage Instructions	Store at -20°C for one year. Avoid repeated freeze-thaw cycles.
Host	Rabbit
Uniprot ID	P68363

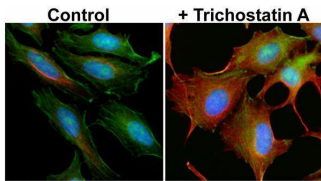
Technical Details

Immunogen	An acetyl-peptide corresponding to Acetyl- alpha-Tubulin (Lys40)
Cross Reactivity	This antibody reacts to alpha-Tubulin acetylated at Lysine 40. No cross-reactivity to non-acetylated alpha-Tubulin at Lysine 40. This antibody may also react to mouse or rat Acetyl- alpha-Tubulin at Lysine 40, as predicted by immunogen homology.
Isotype	Rabbit IgG
Form	Liquid
Concentration	0.5-1mg/ml, actual concentration vary by lot. Use suggested dilution ratio to decide dilution procedure.
Purification	Protein A affinity purified from an animal origin-free culture supernatant
Suggested Dilutions	Immunocytochemistry (ICC): 1:1000-1:5000 dilution WB: 1:1000-1:2000 dilution.

Anti-Acetyl-alpha-Tubulin (Lys40) TUBA1B Rabbit Monoclonal Antibody, Clone#RM318 (M08382-3) Images



Western Blotting result Western Blot analysis of HeLa cell lysates non-treated (-) or treated (+) with Trichostatin A (TSA), using anti-Acetyl-alpha-Tubulin (Lys40) rabbit monoclonal antibody (Clone RM318) at a 1:1000 dilution.



ICC result Immunocytochemistry of HeLa cells non-treated or treated with Trichostatin A (TSA), using anti-Acetyl-alpha-Tubulin (Lys40) rabbit monoclonal antibody (Clone RM318) at a 1:5000 dilution (red). Actin filaments have been labeled with fluorescein phalloidin (green), and nuclei with DAPI (blue).

14 Publications Citing This Product

1. PubMed ID: 26269769, Endogenous Nodal promotes melanoma undergoing epithelial-mesenchymal transition via Snail and Slug in vitro and in vivo.
2. PubMed ID: 18958584, Prohibitin protects against oxidative stress-induced cell injury in cultured neonatal cardiomyocyte
3. PubMed ID: 19412742, NGFI-B targets mitochondria and induces cardiomyocyte apoptosis in restraint-stressed rats by mediating energy metabolism disorder

Visit bosterbio.com/anti-acetyl-alpha-tubulin-lys40-rabbit-monoclonal-antibody-clone-rm318-m08382-3-boster.html to see all 14 publications.

Submit a product review to Biocompare.com

Submit a review of this product to Biocompare.com to receive a \$20 Amazon.com giftcard! Your reviews help your fellow scientists make the right decisions. Thank you for your contribution.



Anti-Acetyl-alpha-Tubulin (Lys40) TUBA1B Rabbit Monoclonal Antibody, Clone#RM318

For Research Use Only. Not for use in diagnostic procedures.