

Anti-alpha Tubulin (acetyl K40) Rabbit Monoclonal Antibody

Catalog Number: M08382-6

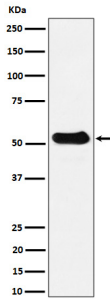
Overview

Product Name	Anti-alpha Tubulin (acetyl K40) Rabbit Monoclonal Antibody
Reactive Species	Human, Mouse, Rat
Description	Boster Bio Anti-alpha Tubulin (acetyl K40) Rabbit Monoclonal Antibody catalog # M08382-6. Tested in WB, IHC, ICC/IF, IP, Flow Cytometry applications. This antibody reacts with Human, Mouse, Rat.
Application	Flow Cytometry, IP, IF, IHC, ICC, WB
Clonality	Monoclonal 31T79
Formulation	Rabbit IgG in stabilizing components, phosphate buffered saline, pH 7.4, 150mM NaCl, 0.02% sodium azide and 50% glycerol. *This antibody is supplied in a stabilized formulation. Compatibility with conjugation reactions depends on the chemistry of the conjugation method used. For conjugation methods that are not compatible with the stabilizing components present in this formulation, a carrier-free antibody format is required.
Storage Instructions	Store at -20°C for one year. For short term storage and frequent use, store at 4°C for up to one month. Avoid repeated freeze-thaw cycles.
Host	Rabbit
Uniprot ID	P68363/P68366

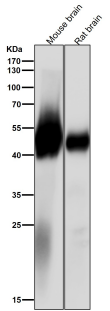
Technical Details

Immunogen	A synthesized peptide derived from human alpha Tubulin (acetyl K40)
Isotype	IgG
Form	Liquid
Concentration	0.5mg/ml
Purification	Affinity-chromatography
Suggested Dilutions	WB 1:5000-15000 IHC 1:50-200 ICC/IF 1:50-200 IP 1:50 FC 1:50

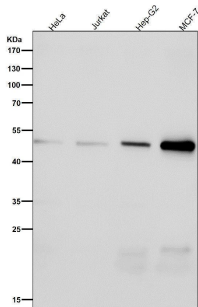
Anti-alpha Tubulin (acetyl K40) Rabbit Monoclonal Antibody (M08382-6) Images



Western blot analysis of alpha Tubulin (acetyl K40) expression in Mouse spleen cell lysate.



All lanes use the Antibody at 1:2W dilution for 1 hour at room temperature.



All lanes use the Antibody at 1:2W dilution for 1 hour at room temperature.

Submit a product review to [Biocompare.com](https://www.biocompare.com)

Submit a review of this product to [Biocompare.com](https://www.biocompare.com) to receive a \$20 Amazon.com giftcard! Your reviews help your fellow scientists make the right decisions. Thank you for your contribution.



Anti-alpha Tubulin (acetyl K40) Rabbit Monoclonal Antibody
For Research Use Only. Not for use in diagnostic procedures.