

Anti-IFI35 Mouse Monoclonal Antibody [Clone ID: OTI1C9]

Catalog Number: M08415

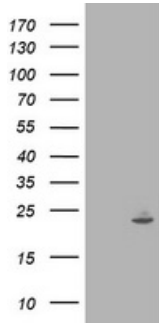
Overview

Product Name	Anti-IFI35 Mouse Monoclonal Antibody [Clone ID: OTI1C9]
Reactive Species	Human
Description	Boster Bio IFI35 mouse monoclonal antibody, clone OTI1C9 (formerly 1C9). Catalog# M08415. Tested in FC, IF, IHC, WB. This antibody reacts with Human.
Application	Flow Cytometry, IF, IHC, WB
Clonality	Monoclonal OTI1C9
Formulation	PBS (pH 7.3) containing 1% stabilizing protein, 50% glycerol and 0.02% sodium azide. This antibody is supplied in a stabilized formulation. Compatibility with conjugation reactions depends on the chemistry of the conjugation method used. For conjugation methods that are not compatible with the stabilizing components present in this formulation, a carrier-free antibody format is required.
Storage Instructions	Store at -20°C as received.
Host	Mouse
Uniprot ID	P80217

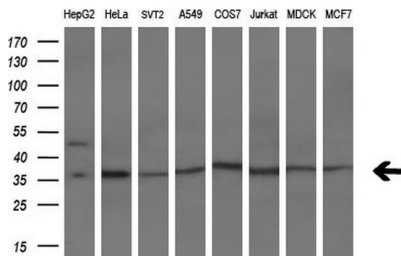
Technical Details

Immunogen	Full length human recombinant protein of human IFI35 (NP_005524) produced in HEK293T cell
Isotype	IgG2a
Concentration	0.4 mg/ml
Purification	Purified from mouse ascites fluids or tissue culture supernatant by affinity chromatography (protein A/G)
Suggested Dilutions	WB 1:2000 IHC 1:150 IF 1:100 Flow Cytometry 1:100

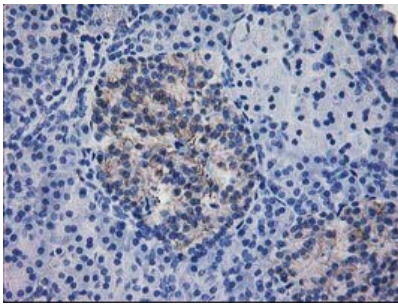
Anti-IFI35 Mouse Monoclonal Antibody [Clone ID: OTI1C9] (M08415) Images



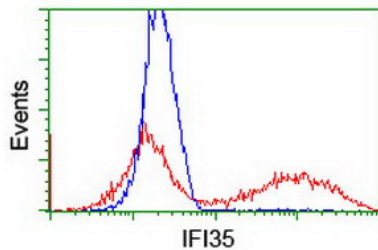
HEK293T cells were transfected with the pCMV6-ENTRY control (Left lane) or pCMV6-ENTRY IFI35 (Right lane) cDNA for 48 hrs and lysed. Equivalent amounts of cell lysates (5 ug per lane) were separated by SDS-PAGE and immunoblotted with anti-IFI35.



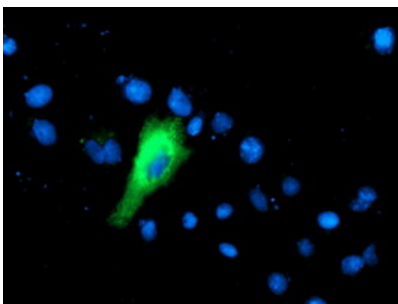
Western blot analysis of extracts (10ug) from 8 different cell lines by using anti-IFI35 monoclonal antibody (1:200).



Immunohistochemical staining of paraffin-embedded Human pancreas tissue within the normal limits using anti-IFI35 mouse monoclonal antibody. (Heat-induced epitope retrieval by 10mM citric buffer)



HEK293T cells transfected with either IFI35 (Myc-DDK-tagged) overexpress plasmid (Red) or empty vector control plasmid (Blue) were immunostained by anti-IFI35 antibody (M08415)



Anti-IFI35 mouse monoclonal antibody (M08415) immunofluorescent staining of COS7 cells transiently transfected by pCMV6-ENTRY IFI35.

Submit a product review to Biocompare.com

Submit a review of this product to Biocompare.com to receive a \$20 Amazon.com giftcard! Your reviews help your fellow scientists make the right decisions. Thank you for your contribution.



Anti-IFI35 Mouse Monoclonal Antibody [Clone ID: OT11C9]

For Research Use Only. Not for use in diagnostic procedures.