

Anti-NPTN Mouse Monoclonal Antibody [Clone ID: OTI3C4]

Catalog Number: M08495

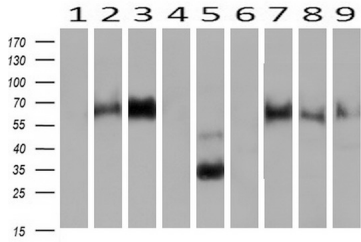
Overview

Product Name	Anti-NPTN Mouse Monoclonal Antibody [Clone ID: OTI3C4]
Reactive Species	Dog, Human, Monkey, Rat
Description	Boster Bio NPTN mouse monoclonal antibody, clone OTI3C4 (formerly 3C4). Catalog# M08495. Tested in IF, IHC, WB. This antibody reacts with Human, Monkey, Rat, Dog.
Application	IF, IHC, WB
Clonality	Monoclonal OTI3C4
Formulation	PBS (pH 7.3) containing 1% stabilizing protein, 50% glycerol and 0.02% sodium azide. This antibody is supplied in a stabilized formulation. Compatibility with conjugation reactions depends on the chemistry of the conjugation method used. For conjugation methods that are not compatible with the stabilizing components present in this formulation, a carrier-free antibody format is required.
Storage Instructions	Store at -20°C as received.
Host	Mouse
Uniprot ID	Q9Y639

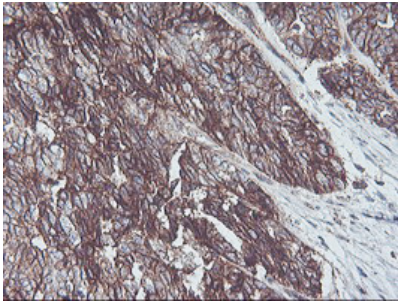
Technical Details

Immunogen	Full length human recombinant protein of human NPTN (NP_059429) produced in HEK293T cell.
Isotype	IgG1
Concentration	0.65 mg/ml
Purification	Purified from mouse ascites fluids or tissue culture supernatant by affinity chromatography (protein A/G)
Suggested Dilutions	WB: 1:500~2000 IHC: 1:150 IF: 1:100

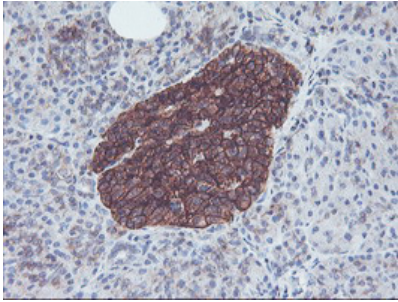
Anti-NPTN Mouse Monoclonal Antibody [Clone ID: OTI3C4] (M08495) Images



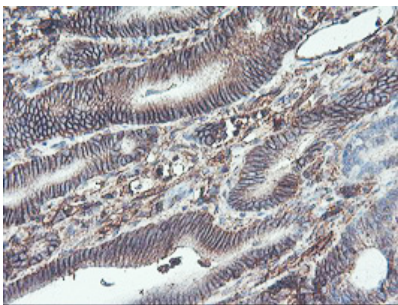
Western blot analysis of extracts (10ug) from 9 Human tissue by using anti-NPTN monoclonal antibody at 1:200 (1: Testis; 2: Omentum; 3: Uterus; 4: Breast; 5: Brain; 6: Liver; 7: Ovary; 8: Thyroid gland; 9: Colon).



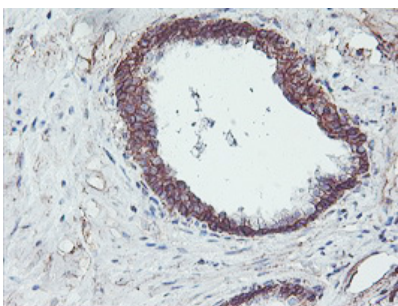
Immunohistochemical staining of paraffin-embedded Adenocarcinoma of Human ovary tissue using anti-NPTN mouse monoclonal antibody. (Heat-induced epitope retrieval by 10mM citric buffer)



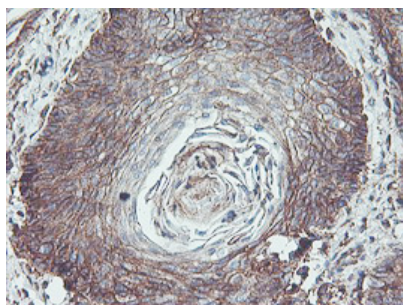
Immunohistochemical staining of paraffin-embedded Human pancreas tissue within the normal limits using anti-NPTN mouse monoclonal antibody. (Heat-induced epitope retrieval by 10mM citric buffer)



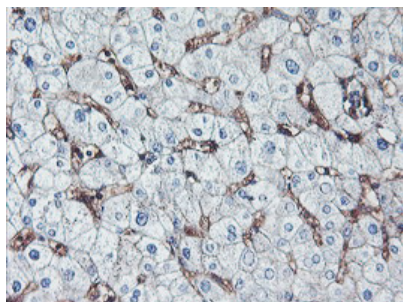
Immunohistochemical staining of paraffin-embedded Carcinoma of Human pancreas tissue using anti-NPTN mouse monoclonal antibody. (Heat-induced epitope retrieval by 10mM citric buffer)



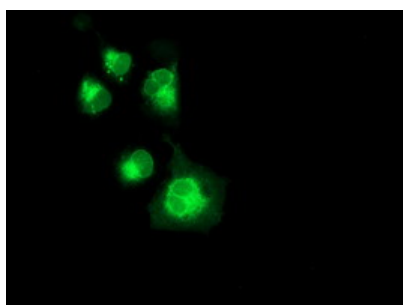
Immunohistochemical staining of paraffin-embedded Carcinoma of Human prostate tissue using anti-NPTN mouse monoclonal antibody. (Heat-induced epitope retrieval by 10mM citric buffer)



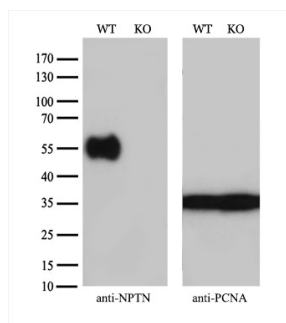
Immunohistochemical staining of paraffin-embedded Carcinoma of Human bladder tissue using anti-NPTN mouse monoclonal antibody. (Heat-induced epitope retrieval by 10mM citric buffer)



Immunohistochemical staining of paraffin-embedded Human liver tissue within the normal limits using anti-NPTN mouse monoclonal antibody. (Heat-induced epitope retrieval by 10mM citric buffer)



Anti-NPTN mouse monoclonal antibody (M08495) immunofluorescent staining of COS7 cells transiently transfected by pCMV6-ENTRY NPTN.



Equivalent amounts of cell lysates (10 ug per lane) of wild-type HEK293T cells (WT) and NPTN-Knockout HEK293T cells (KO) were separated by SDS-PAGE and immunoblotted with anti-NPTN monoclonal antibody M08495 (1:1000). Then the blotted membrane was stripped and reprobed with anti-PCNA antibody as a loading control.

Submit a product review to [Biocompare.com](https://www.biocompare.com)

Submit a review of this product to [Biocompare.com](https://www.biocompare.com) to receive a \$20 Amazon.com giftcard! Your reviews help your fellow scientists make the right decisions. Thank you for your contribution.



Anti-NPTN Mouse Monoclonal Antibody [Clone ID: OT13C4]

For Research Use Only. Not for use in diagnostic procedures.