

## Anti-COPS6 Mouse Monoclonal Antibody [Clone ID: OTI4E7]

Catalog Number: M08543

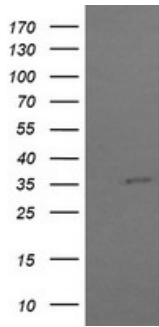
### Overview

Product Name	Anti-COPS6 Mouse Monoclonal Antibody [Clone ID: OTI4E7]
Reactive Species	Human, Mouse, Rat
Description	Boster Bio COPS6 mouse monoclonal antibody, clone OTI4E7 (formerly 4E7). Catalog# M08543. Tested in IF, IHC, WB. This antibody reacts with Human, Mouse, Rat.
Application	IF, IHC, WB
Clonality	Monoclonal OTI4E7
Formulation	PBS (PH 7.3) containing 1% BSA, 50% glycerol and 0.02% sodium azide.
Storage Instructions	Store at -20°C as received.
Host	Mouse
Uniprot ID	Q7L5N1

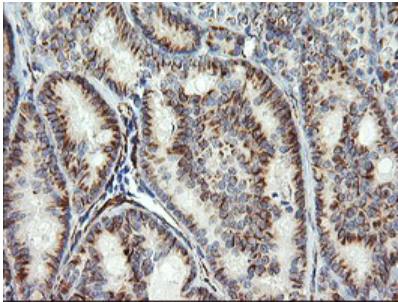
### Technical Details

Immunogen	Human recombinant protein fragment corresponding to amino acids 58-327 of human COPS6 (NP_006824) produced in E.coli.
Isotype	IgG2a
Concentration	1 mg/ml
Purification	Purified from mouse ascites fluids or tissue culture supernatant by affinity chromatography (protein A/G)
Suggested Dilutions	Dilute the sample so that the expected range of concentrations fall within the detection range of this kit. If the expected range of concentration is unknown, a pilot test should be conducted to decide the optimal dilution ratio for your samples. Some PubMed article(s) citing the expression level of this target are as follows:  For protocols, please visit <a href="https://www.bosterbio.com/protocol-and-troubleshooting/">https://www.bosterbio.com/protocol-and-troubleshooting/</a>

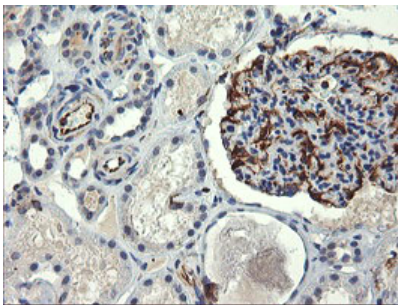
### Anti-COPS6 Mouse Monoclonal Antibody [Clone ID: OTI4E7] (M08543) Images



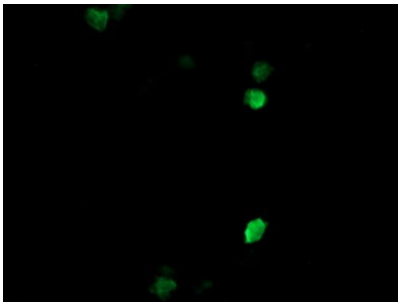
HEK293T cells were transfected with the pCMV6-ENTRY control (Left lane) or pCMV6-ENTRY COPS6 (Right lane) cDNA for 48 hrs and lysed. Equivalent amounts of cell lysates (5 ug per lane) were separated by SDS-PAGE and immunoblotted with anti-COPS6.



Immunohistochemical staining of paraffin-embedded Carcinoma of Human thyroid tissue using anti-COPS6 mouse monoclonal antibody. (Heat-induced epitope retrieval by 10mM citric buffer)



Immunohistochemical staining of paraffin-embedded Human Kidney tissue within the normal limits using anti-COPS6 mouse monoclonal antibody. (Heat-induced epitope retrieval by 10mM citric buffer)



Anti-COPS6 mouse monoclonal antibody (M08543) immunofluorescent staining of COS7 cells transiently transfected by pCMV6-ENTRY COPS6.

**Submit a product review to [Biocompare.com](https://www.biocompare.com)**

Submit a review of this product to [Biocompare.com](https://www.biocompare.com) to receive a \$20 Amazon.com giftcard! Your reviews help your fellow scientists make the right decisions. Thank you for your contribution.



Anti-COPS6 Mouse Monoclonal Antibody [Clone ID: OTI4E7]