

Anti-Apc11 (ANAPC11) Mouse Monoclonal Antibody [Clone ID: OTI3F5]

Catalog Number: M08555

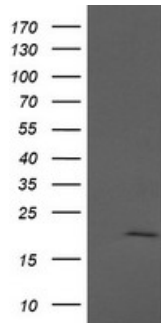
Overview

Product Name	Anti-Apc11 (ANAPC11) Mouse Monoclonal Antibody [Clone ID: OTI3F5]
Reactive Species	Human, Mouse, Rat
Description	Boster Bio ANAPC11 (Apc11) mouse monoclonal antibody, clone OTI3F5 (formerly 3F5). Catalog# M08555. Tested in IF, IHC, WB. This antibody reacts with Human, Mouse, Rat.
Application	IF, IHC, WB
Clonality	Monoclonal OTI3F5
Formulation	PBS (pH 7.3) containing 1% stabilizing protein, 50% glycerol and 0.02% sodium azide. This antibody is supplied in a stabilized formulation. Compatibility with conjugation reactions depends on the chemistry of the conjugation method used. For conjugation methods that are not compatible with the stabilizing components present in this formulation, a carrier-free antibody format is required.
Storage Instructions	Store at -20°C as received.
Host	Mouse
Uniprot ID	Q9NYG5

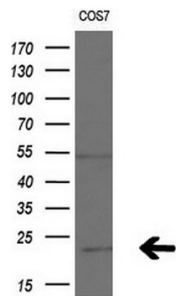
Technical Details

Immunogen	Full length human recombinant protein of human ANAPC11 (NP_001002244) produced in HEK293T cell.
Isotype	IgG1
Concentration	1 mg/ml
Purification	Purified from mouse ascites fluids or tissue culture supernatant by affinity chromatography (protein A/G)
Suggested Dilutions	WB 1:4000 IHC 1:150 IF 1:100

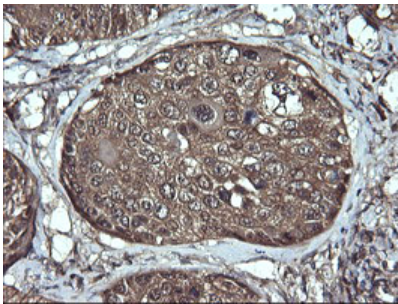
Anti-Apc11 (ANAPC11) Mouse Monoclonal Antibody [Clone ID: OTI3F5] (M08555) Images



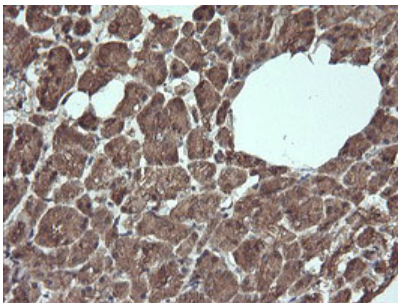
HEK293T cells were transfected with the pCMV6-ENTRY control (Left lane) or pCMV6-ENTRY ANAPC11 (Right lane) cDNA for 48 hrs and lysed. Equivalent amounts of cell lysates (5 ug per lane) were separated by SDS-PAGE and immunoblotted with anti-ANAPC11.



Western blot analysis of extracts (10ug) from 1 cell line by using anti-ANAPC11 monoclonal antibody at 1:200 dilution.

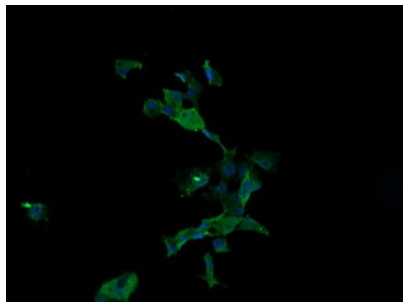
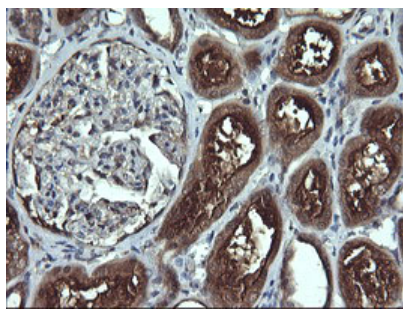


Immunohistochemical staining of paraffin-embedded Carcinoma of Human lung tissue using anti-ANAPC11 mouse monoclonal antibody. (Heat-induced epitope retrieval by 10mM citric buffer)



Immunohistochemical staining of paraffin-embedded Human pancreas tissue within the normal limits using anti-ANAPC11 mouse monoclonal antibody. (Heat-induced epitope retrieval by 10mM citric buffer)

Immunohistochemical staining of paraffin-embedded Human Kidney tissue within the normal limits using anti-ANAPC11 mouse monoclonal antibody. (Heat-induced epitope retrieval by 10mM citric buffer)



Western blot analysis of extracts (10ug) from COS7 cell line by using anti-ANAPC11 monoclonal antibody at 1:200 dilution.

Submit a product review to [Biocompare.com](https://www.biocompare.com)

Submit a review of this product to [Biocompare.com](https://www.biocompare.com) to receive a \$20 Amazon.com giftcard! Your reviews help your fellow scientists make the right decisions. Thank you for your contribution.



Anti-Apc11 (ANAPC11) Mouse Monoclonal Antibody [Clone ID: OTI3F5]

For Research Use Only. Not for use in diagnostic procedures.