

## Anti-HTR1E Antibody (C-Term)

Catalog Number: M08598

### About HTR1E

G-protein coupled receptor for 5-hydroxytryptamine (serotonin). Also functions as a receptor for various alkaloids and psychoactive substances. Ligand binding causes a conformation change that triggers signaling via guanine nucleotide-binding proteins (G proteins) and modulates the activity of down-stream effectors, such as adenylate cyclase. Signaling inhibits adenylate cyclase activity.

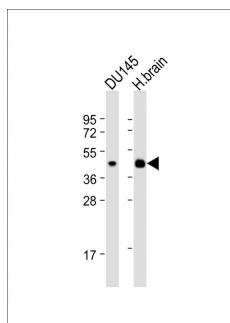
### Overview

Product Name	Anti-HTR1E Antibody (C-Term)
Reactive Species	Human
Description	Boster Bio Anti-HTR1E Antibody (C-Term) (Catalog # M08598). Tested in WB, IHC-P application(s). This antibody reacts with Human.
Application	IHC-P, WB
Clonality	Polyclonal
Formulation	Purified polyclonal antibody supplied in PBS with 0.09% (W/V) sodium azide.
Storage Instructions	Maintain refrigerated at 2-8°C for up to 2 weeks. For long-term storage, store at -20°C in small aliquots to prevent freeze-thaw cycles.
Host	Rabbit
Uniprot ID	P28566

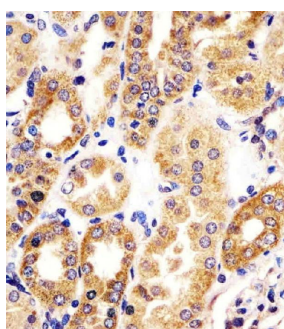
### Technical Details

Immunogen	This HTR1E antibody is generated from a rabbit immunized with a KLH conjugated synthetic peptide between 223-258 amino acids from human HTR1E.
Predicted Reactive Species	Bovine, C. elegans, Chicken, Hamster, Monkey, Mouse, Pig, Rat
Isotype	Rabbit IgG
Purification	This antibody is purified through a protein A column, followed by peptide affinity purification.
Suggested Dilutions	WB: 1:2000 IHC-P: 1:25

## Anti-HTR1E Antibody (C-Term) (M08598) Images



All lanes : Anti-HTR1E Antibody (C-Term) at 1:2000 dilution  
Lane 1: DU145 whole cell lysate  
Lane 2: human brain lysate  
Lysates/proteins at 20 µg per lane. Secondary Goat Anti-Rabbit IgG, (H+L), Peroxidase conjugated at 1/10000 dilution. Predicted band size : 42 kDa  
Blocking/Dilution buffer: 5% NFDM/TBST.



M08598 staining HTR1E in human kidney tissue sections by Immunohistochemistry (IHC-P -paraformaldehyde-fixed, paraffin-embedded sections). Tissue was fixed with formaldehyde and blocked with 3% BSA for 0.5 hour at room temperature; antigen retrieval was by heat mediation with a citrate buffer (pH6). Samples were incubated with primary antibody (1/25) for 1 hours at 37°C. A undiluted biotinylated goat polyvalent antibody was used as the secondary antibody.

### Submit a product review to [Biocompare.com](https://www.biocompare.com)

Submit a review of this product to [Biocompare.com](https://www.biocompare.com) to receive a \$20 Amazon.com giftcard! Your reviews help your fellow scientists make the right decisions. Thank you for your contribution.



Anti-HTR1E Antibody (C-Term)

For Research Use Only. Not for use in diagnostic procedures.