

## Anti-RPL10A Mouse Monoclonal Antibody [Clone ID: OTI4B2]

Catalog Number: M08606

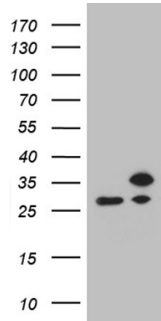
### Overview

Product Name	Anti-RPL10A Mouse Monoclonal Antibody [Clone ID: OTI4B2]
Reactive Species	Human, Mouse, Rat
Description	Boster Bio RPL10A mouse monoclonal antibody, clone OTI4B2. Catalog# M08606. Tested in IHC, WB. This antibody reacts with Human, Mouse, Rat.
Application	IHC, WB
Clonality	Monoclonal OTI4B2
Formulation	PBS (pH 7.3) containing 1% stabilizing protein, 50% glycerol and 0.02% sodium azide. This antibody is supplied in a stabilized formulation. Compatibility with conjugation reactions depends on the chemistry of the conjugation method used. For conjugation methods that are not compatible with the stabilizing components present in this formulation, a carrier-free antibody format is required.
Storage Instructions	Store at -20°C as received.
Host	Mouse
Uniprot ID	P62906

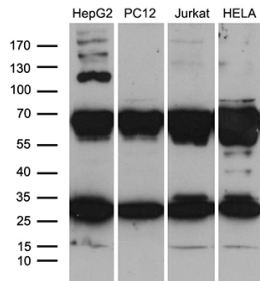
### Technical Details

Immunogen	Full length human recombinant protein of human RPL10A (NP_009035) produced in E.coli.
Isotype	IgG2a
Concentration	1 mg/ml
Purification	Purified from mouse ascites fluids or tissue culture supernatant by affinity chromatography (protein A/G)
Suggested Dilutions	WB 1:500 IHC 1:2000

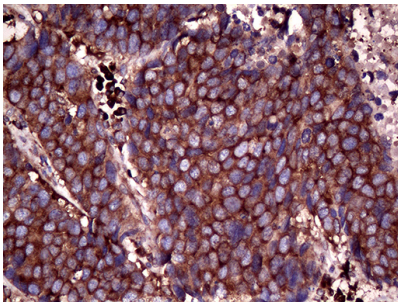
## Anti-RPL10A Mouse Monoclonal Antibody [Clone ID: OTI4B2] (M08606) Images



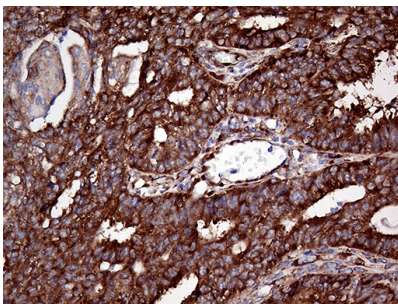
HEK293T cells were transfected with the pCMV6-ENTRY control (Left lane) or pCMV6-ENTRY RPL10A (Right lane) cDNA for 48 hrs and lysed. Equivalent amounts of cell lysates (5 ug per lane) were separated by SDS-PAGE and immunoblotted with anti-RPL10A (1:500).



Western blot analysis of extracts (35ug) from 4 different cell lines by using anti-RPL10A monoclonal antibody (1:500).

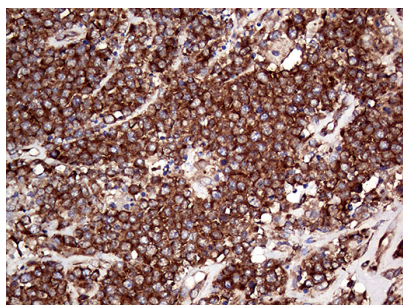


Immunohistochemical staining of paraffin-embedded Carcinoma of Human lung tissue using anti-RPL10A mouse monoclonal antibody. (Heat-induced epitope retrieval by 1mM EDTA in 10mM Tris buffer (pH8.5) at 120Å°C for 3min)



Immunohistochemical staining of paraffin-embedded Adenocarcinoma of Human endometrium tissue using anti-RPL10A mouse monoclonal antibody. (Heat-induced epitope retrieval by 1mM EDTA in 10mM Tris buffer (pH8.5) at 120Å°C for 3min)

Immunohistochemical staining of paraffin-embedded Human lymphoma tissue using anti-RPL10A mouse monoclonal antibody. (Heat-induced epitope retrieval by 1mM EDTA in 10mM Tris buffer (pH8.5) at 120Å°C for 3min)



## Submit a product review to Biocompare.com

Submit a review of this product to Biocompare.com to receive a \$20 Amazon.com giftcard! Your reviews help your fellow scientists make the right decisions. Thank you for your contribution.



Anti-RPL10A Mouse Monoclonal Antibody [Clone ID: OTI4B2]

For Research Use Only. Not for use in diagnostic procedures.