

Anti-GCIP interacting protein p29 (SYF2) Mouse Monoclonal Antibody [Clone ID: OTI6A5]

Catalog Number: M08626

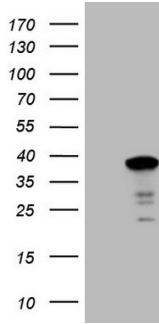
Overview

Product Name	Anti-GCIP interacting protein p29 (SYF2) Mouse Monoclonal Antibody [Clone ID: OTI6A5]
Reactive Species	Human, Mouse, Rat
Description	Boster Bio SYF2 mouse monoclonal antibody, clone OTI6A5 (formerly 6A5). Catalog# M08626. Tested in IHC, WB. This antibody reacts with Human, Mouse, Rat.
Application	IHC, WB
Clonality	Monoclonal OTI6A5
Formulation	PBS (pH 7.3) containing 1% stabilizing protein, 50% glycerol and 0.02% sodium azide. This antibody is supplied in a stabilized formulation. Compatibility with conjugation reactions depends on the chemistry of the conjugation method used. For conjugation methods that are not compatible with the stabilizing components present in this formulation, a carrier-free antibody format is required.
Storage Instructions	Store at -20°C as received.
Host	Mouse
Uniprot ID	O95926

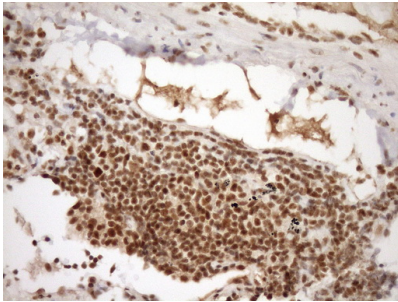
Technical Details

Immunogen	Human recombinant protein fragment corresponding to amino acids 2-92 of human SYF2 (NP_056299) produced in E.coli.
Isotype	IgG1
Concentration	1 mg/ml
Purification	Purified from mouse ascites fluids or tissue culture supernatant by affinity chromatography (protein A/G)
Suggested Dilutions	WB 1:2000 IHC 1:150

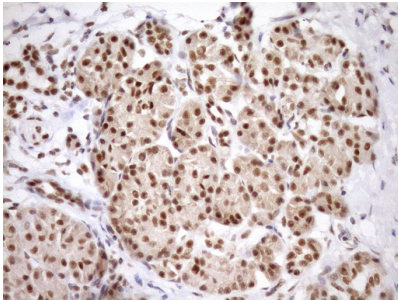
Anti-GCIP interacting protein p29 (SYF2) Mouse Monoclonal Antibody [Clone ID: OTI6A5] (M08626) Images



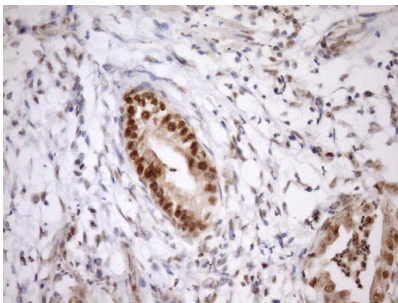
HEK293T cells were transfected with the pCMV6-ENTRY control (Left lane) or pCMV6-ENTRY SYF2 (Right lane) cDNA for 48 hrs and lysed. Equivalent amounts of cell lysates (5 ug per lane) were separated by SDS-PAGE and immunoblotted with anti-SYF2 (1:2000).



Immunohistochemical staining of paraffin-embedded Human Ovary tissue within the normal limits using anti-SYF2 mouse monoclonal antibody. (Heat-induced epitope retrieval by Tris-EDTA)

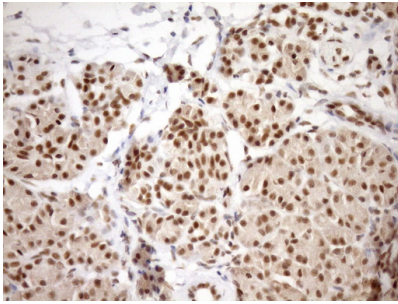


Immunohistochemical staining of paraffin-embedded Human pancreas tissue within the normal limits using anti-SYF2 mouse monoclonal antibody. (Heat-induced epitope retrieval by Tris-EDTA)

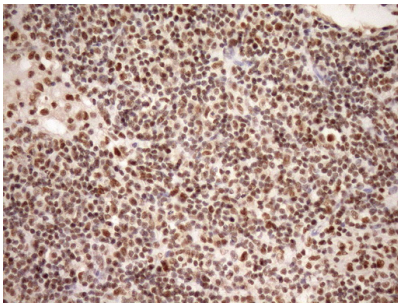
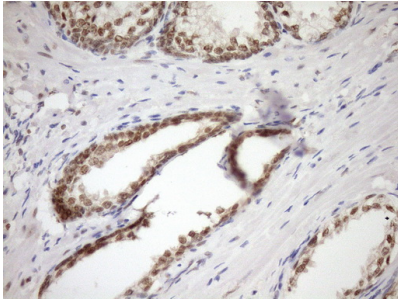


Immunohistochemical staining of paraffin-embedded Carcinoma of Human pancreas tissue using anti-SYF2 mouse monoclonal antibody. (Heat-induced epitope retrieval by Tris-EDTA)

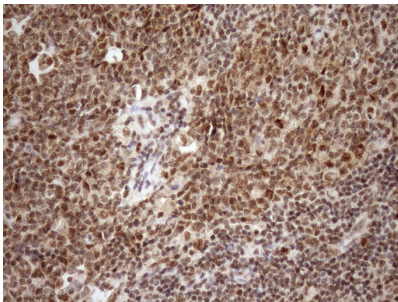
Immunohistochemical staining of paraffin-embedded Human thyroid tissue within the normal limits using anti-SYF2 mouse monoclonal antibody. (Heat-induced epitope retrieval by Tris-EDTA)



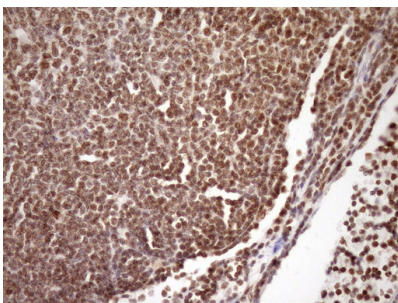
Immunohistochemical staining of paraffin-embedded Human prostate tissue within the normal limits using anti-SYF2 mouse monoclonal antibody. (Heat-induced epitope retrieval by Tris-EDTA)



Immunohistochemical staining of paraffin-embedded Carcinoma of Human bladder tissue using anti-SYF2 mouse monoclonal antibody. (Heat-induced epitope retrieval by Tris-EDTA)

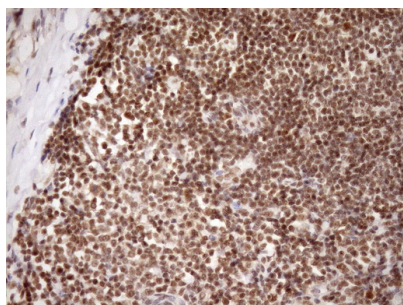


Immunohistochemical staining of paraffin-embedded Human lymph node tissue within the normal limits using anti-SYF2 mouse monoclonal antibody. (Heat-induced epitope retrieval by Tris-EDTA)

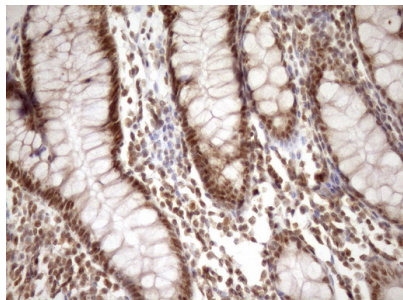


Immunohistochemical staining of paraffin-embedded Human lymphoma tissue using anti-SYF2 mouse monoclonal antibody. (Heat-induced epitope retrieval by Tris-EDTA)

Immunohistochemical staining of paraffin-embedded Human tonsil within the normal limits using anti-SYF2 mouse monoclonal antibody. (Heat-induced epitope retrieval by Tris-



EDTA



Immunohistochemical staining of paraffin-embedded Human colon tissue within the normal limits using anti-SYF2 mouse monoclonal antibody. (Heat-induced epitope retrieval by Tris-EDTA)

Submit a product review to [Biocompare.com](https://www.biocompare.com)

Submit a review of this product to [Biocompare.com](https://www.biocompare.com) to receive a \$20 Amazon.com giftcard! Your reviews help your fellow scientists make the right decisions. Thank you for your contribution.



Anti-GCIP interacting protein p29 (SYF2) Mouse Monoclonal Antibody [Clone ID: OTI6A5]

For Research Use Only. Not for use in diagnostic procedures.