

Anti-PGAP1 Antibody (N-Term)

Catalog Number: M08640

About PGAP1

Involved in inositol deacylation of GPI-anchored proteins. GPI inositol deacylation may important for efficient transport of GPI-anchored proteins from the endoplasmic reticulum to the Golgi (By similarity).

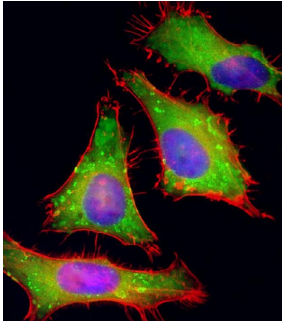
Overview

Product Name	Anti-PGAP1 Antibody (N-Term)
Reactive Species	Human, Mouse, Rat
Description	Boster Bio Anti-PGAP1 Antibody (N-Term) (Catalog # M08640). Tested in WB, Flow Cytometry, IF application(s). This antibody reacts with Human, Mouse, Rat.
Application	Flow Cytometry, IF, WB
Clonality	Polyclonal
Formulation	Purified polyclonal antibody supplied in PBS with 0.09% (W/V) sodium azide.
Storage Instructions	Maintain refrigerated at 2-8°C for up to 2 weeks. For long-term storage, store at -20°C in small aliquots to prevent freeze-thaw cycles.
Host	Rabbit
Uniprot ID	Q75T13

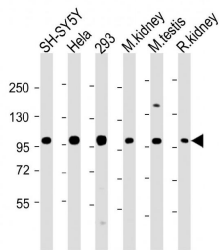
Technical Details

Immunogen	This PGAP1 antibody is generated from a rabbit immunized with a KLH conjugated synthetic peptide between 90-122 amino acids from human PGAP1.
Predicted Reactive Species	Mouse, Rat
Isotype	Rabbit IgG
Purification	This antibody is purified through a protein A column, followed by peptide affinity purification.
Suggested Dilutions	Dilute the sample so that the expected range of concentrations fall within the detection range of this kit. If the expected range of concentration is unknown, a pilot test should be conducted to decide the optimal dilution ratio for your samples. Some PubMed article(s) citing the expression level of this target are as follows: Boster Bio's internal QC testing used: IF: 1:25 WB: 1:2000 FC: 1:25

Anti-PGAP1 Antibody (N-Term) (M08640) Images



Immunofluorescent analysis of 4% paraformaldehyde-fixed, 0.1% Triton X-100 permeabilized HeLa (human cervical epithelial adenocarcinoma cell line) cells labeling PGAP1 with M08640 at 1/25 dilution, followed by Dylight® 488-conjugated goat anti-rabbit IgG secondary antibody at 1/200 dilution (green). Immunofluorescence image showing cytoplasm staining on HeLa cell line. Cytoplasmic actin is detected with Dylight® 554 Phalloidin at 1/100 dilution (red). The nuclear counter stain is DAPI (blue).



All lanes : Anti-PGAP1 Antibody (N-Term) at 1:2000 dilution

Lane 1: SH-SY5Y whole cell lysate

Lane 2: HeLa whole cell lysate

Lane 3: 293 whole cell lysate

Lane 4: mouse kidney lysate

Lane 5: mouse testis lysate

Lane 6: rat kidney lysate

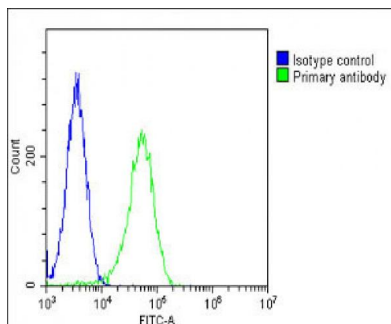
Lysates/proteins at 20 µg per lane.

Secondary

Goat Anti-Rabbit IgG, (H+L), Peroxidase conjugated at 1/10000 dilution.

Predicted band size : 105 kDa

Blocking/Dilution buffer: 5% NFDM/TBST.



Overlay histogram showing HeLa cells stained with M08640 (green line). The cells were fixed with 2% paraformaldehyde (10 min) and then permeabilized with 90% methanol for 10 min. The cells were then incubated in 2% bovine serum albumin to block non-specific protein-protein interactions followed by the antibody (M08640, 1:25 dilution) for 60 min at 37°C. The secondary antibody used was Goat-Anti-Rabbit IgG, DyLight® 488 Conjugated Highly Cross-Adsorbed at 1/200 dilution for 40 min at 37°C. Isotype control antibody (blue line) was rabbit IgG1 (1g/1x10⁶ cells) used under the same conditions. Acquisition of >10, 000 events was performed.

Submit a product review to Biocompare.com

Submit a review of this product to Biocompare.com to receive a \$20 Amazon.com giftcard! Your reviews help your fellow scientists make the right decisions. Thank you for your contribution.



Anti-PGAP1 Antibody (N-Term)