

## Anti-TOMM22/TOM22 Rabbit Monoclonal Antibody

Catalog Number: M08668

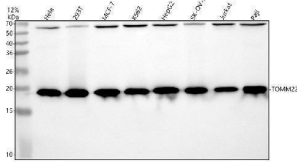
### Overview

Product Name	Anti-TOMM22/TOM22 Rabbit Monoclonal Antibody
Reactive Species	Human
Description	Boster Bio Anti-TOMM22/TOM22 Rabbit Monoclonal Antibody catalog # M08668. Tested in WB, IHC, ICC/IF, IP, Flow Cytometry applications. This antibody reacts with Human.
Application	Flow Cytometry, IP, IF, IHC, ICC, WB
Clonality	Monoclonal 22T35
Formulation	Rabbit IgG in stabilizing components, phosphate buffered saline, pH 7.4, 150mM NaCl, 0.02% sodium azide and 50% glycerol. *This antibody is supplied in a stabilized formulation. Compatibility with conjugation reactions depends on the chemistry of the conjugation method used. For conjugation methods that are not compatible with the stabilizing components present in this formulation, a carrier-free antibody format is required.
Storage Instructions	Store at -20°C for one year. For short term storage and frequent use, store at 4°C for up to one month. Avoid repeated freeze-thaw cycles.
Host	Rabbit
Uniprot ID	Q9NS69

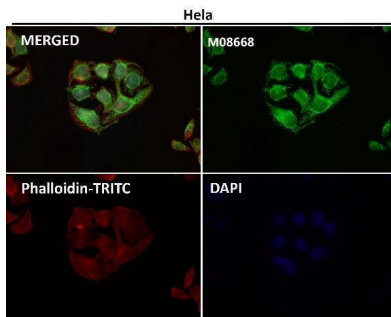
### Technical Details

Immunogen	A synthesized peptide derived from human TOMM22
Isotype	IgG
Form	Liquid
Concentration	0.5mg/ml
Purification	Affinity-chromatography
Suggested Dilutions	WB 1:500-2000 IHC 1:50-200 ICC/IF 1:50-200 IP 1:50 FC 1:50

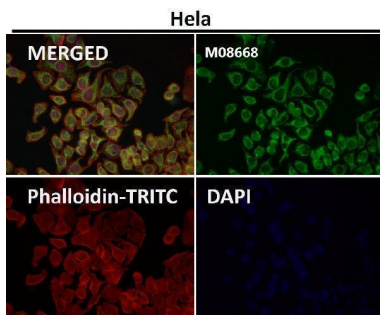
## Anti-TOMM22/TOM22 Rabbit Monoclonal Antibody (M08668) Images



Western blot analysis of CLIC4 using anti-CLIC4 antibody (M08668). Electrophoresis was performed on a 5-20% SDS-PAGE gel at 70V (Stacking gel) / 90V (Resolving gel) for 2-3 hours. The sample well of each lane was loaded with 30 ug of sample under reducing conditions. Lane 1: human HeLa whole cell lysates, Lane 2: human 293T whole cell lysates, Lane 3: human MCF-7 whole cell lysates, Lane 4: human K562 whole cell lysates, Lane 5: human HepG2 whole cell lysates, Lane 6: human SK-OV-3 whole cell lysates, Lane 7: human Jurkat whole cell lysates, Lane 8: human Raji whole cell lysates. After electrophoresis, proteins were transferred to a nitrocellulose membrane at 150 mA for 50-90 minutes. Blocked the membrane with 5% non-fat milk/TBS for 1.5 hour at RT. The membrane was incubated with rabbit anti-CLIC4 antigen affinity purified monoclonal antibody (Catalog # M08668) at 1:500 overnight at 4°C, then washed with TBS-0.1%Tween 3 times with 5 minutes each and probed with a goat anti-rabbit IgG-HRP secondary antibody at a dilution of 1:500 for 1.5 hour at RT. The signal is developed using an Enhanced Chemiluminescent detection (ECL) kit (Catalog # EK1002) with Tanon 5200 system. A specific band was detected for CLIC4 at approximately 18 kDa. The expected band size for CLIC4 is at 29 kDa.

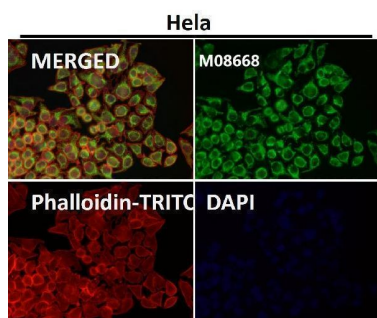


Immunofluorescent analysis using the Antibody at 1:50 dilution.



Immunofluorescent analysis using the Antibody at 1:150 dilution.

Immunofluorescent analysis using the Antibody at 1:500 dilution.



## Submit a product review to [Biocompare.com](https://www.biocompare.com)

Submit a review of this product to [Biocompare.com](https://www.biocompare.com) to receive a \$20 Amazon.com giftcard! Your reviews help your fellow scientists make the right decisions. Thank you for your contribution.



Anti-TOMM22/TOM22 Rabbit Monoclonal Antibody

For Research Use Only. Not for use in diagnostic procedures.