

Anti-F4/80/ADGRE1 Antibody (Monoclonal, 33A07)

Catalog Number: M08751-1

About Adgre1

Predicted to enable G protein-coupled receptor activity. Predicted to be involved in adenylate cyclase-activating G protein-coupled receptor signaling pathway. Predicted to act upstream of or within G protein-coupled receptor signaling pathway and adaptive immune response. Located in external side of plasma membrane. Is expressed in several structures, including cardiovascular system; central nervous system; genitourinary system; hemolymphoid system; and intestine. Orthologous to human ADGRE1 (adhesion G protein-coupled receptor E1).

Overview

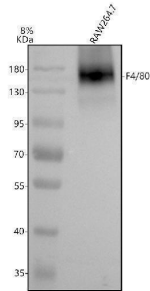
Product Name	Anti-F4/80/ADGRE1 Antibody (Monoclonal, 33A07)
Reactive Species	Mouse, Rat
Description	Boster Bio Anti-F4/80/ADGRE1 Antibody (Monoclonal, 33A07) catalog # M08751-1. Tested in WB, IHC, IF applications. This antibody reacts with Mouse, Rat.
Application	IF, IHC, WB
Clonality	Monoclonal 33A07
Formulation	Rabbit IgG in stabilizing components, phosphate buffered saline, pH 7.4, 150mM NaCl, 0.02% sodium azide and 50% glycerol. This antibody is supplied in a stabilized formulation. Compatibility with conjugation reactions depends on the chemistry of the conjugation method used. For conjugation methods that are not compatible with the stabilizing components present in this formulation, a carrier-free antibody format is required.
Storage Instructions	Store at -20°C for one year. For short term storage and frequent use, store at 4°C for up to one month. Avoid repeated freeze-thaw cycles.
Host	Rabbit
Uniprot ID	Q61549

Technical Details

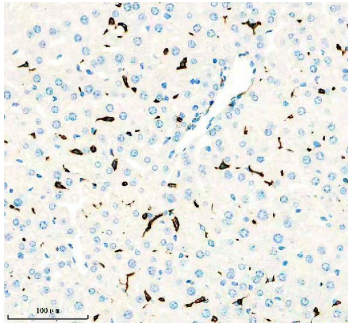
Immunogen	Recombinant protein within mouse F4/80 aa 3-648.
Form	Liquid
Concentration	500 ug/ml
Purification	Protein A affinity purified.
Suggested Dilutions	Western blot, 1:500-2000 Immunohistochemistry, 1:50-200 Immunofluorescence, 1:50-200



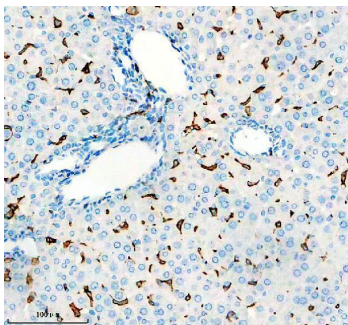
Anti-F4/80/ADGRE1 Antibody (Monoclonal, 33A07) (M08751-1) Images



Western blot analysis of F4/80/ADGRE1 using anti-F4/80/ADGRE1 antibody (M08751-1). Electrophoresis was performed on a 8% SDS-PAGE gel at 80V (Stacking gel) / 120V (Resolving gel) for 2 hours. The sample well of each lane was loaded with 30 ug of sample under reducing conditions. Lane 1: mouse RAW264.7 whole cell lysates. After electrophoresis, proteins were transferred to a nitrocellulose membrane at 150 mA for 50-90 minutes. Blocked the membrane with 5% non-fat milk/TBS for 1.5 hour at RT. The membrane was incubated with rabbit anti-F4/80/ADGRE1 antigen affinity purified monoclonal antibody (M08751-1) at 1:500 overnight at 4°C, then washed with TBS-0.1%Tween 3 times with 5 minutes each and probed with a goat anti-rabbit IgG-HRP secondary antibody at a dilution of 1:5000 for 1.5 hour at RT. The signal is developed using an ECL Plus Western Blotting Substrate (Catalog # AR1196-200) with Tanon 5200 system. A specific band was detected for F4/80/ADGRE1 at approximately 150 kDa. The expected band size for F4/80/ADGRE1 is at 102 kDa.



IHC analysis of F4/80/ADGRE1 using anti-F4/80/ADGRE1 antibody (M08751-1). F4/80/ADGRE1 was detected in a paraffin-embedded section of mouse liver tissue. Heat mediated antigen retrieval was performed in EDTA buffer (pH 8.0, epitope retrieval solution). The tissue section was blocked with 10% goat serum. The tissue section was then incubated with 1:50 rabbit anti-F4/80/ADGRE1 Antibody (M08751-1) overnight at 4°C. Peroxidase Conjugated Goat Anti-rabbit IgG was used as secondary antibody and incubated for 30 minutes at 37°C. The tissue section was developed using HRP Conjugated Rabbit IgG Super Vision Assay Kit (Catalog # SV0002) with DAB as the chromogen.



IHC analysis of F4/80/ADGRE1 using anti-F4/80/ADGRE1 antibody (M08751-1). F4/80/ADGRE1 was detected in a paraffin-embedded section of rat liver tissue. Heat mediated antigen retrieval was performed in EDTA buffer (pH 8.0, epitope retrieval solution). The tissue section was blocked with 10% goat serum. The tissue section was then incubated with 1:50 rabbit anti-F4/80/ADGRE1 Antibody (M08751-1) overnight at 4°C. Peroxidase Conjugated Goat Anti-rabbit IgG was used as secondary antibody and incubated for 30 minutes at 37°C. The tissue section was developed using HRP Conjugated Rabbit IgG Super Vision Assay Kit (Catalog # SV0002) with DAB as the chromogen.

Submit a product review to [Biocompare.com](https://www.biocompare.com)

Submit a review of this product to [Biocompare.com](https://www.biocompare.com) to receive a \$20 Amazon.com giftcard! Your reviews help your fellow scientists make the right decisions. Thank you for your contribution.



Anti-F4/80/ADGRE1 Antibody (Monoclonal, 33A07)

For Research Use Only. Not for use in diagnostic procedures.