

Anti-POLR2E Mouse Monoclonal Antibody [Clone ID: OTI3B5]

Catalog Number: M08765

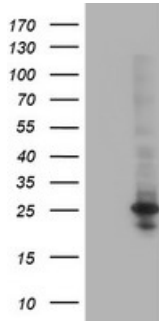
Overview

Product Name	Anti-POLR2E Mouse Monoclonal Antibody [Clone ID: OTI3B5]
Reactive Species	Dog, Human, Monkey, Mouse, Rat
Description	Boster Bio POLR2E mouse monoclonal antibody, clone OTI3B5 (formerly 3B5). Catalog# M08765. Tested in FC, IF, IHC, WB. This antibody reacts with Human, Monkey, Mouse, Rat, Dog.
Application	Flow Cytometry, IF, IHC, WB
Clonality	Monoclonal OTI3B5
Formulation	PBS (pH 7.3) containing 1% stabilizing protein, 50% glycerol and 0.02% sodium azide. This antibody is supplied in a stabilized formulation. Compatibility with conjugation reactions depends on the chemistry of the conjugation method used. For conjugation methods that are not compatible with the stabilizing components present in this formulation, a carrier-free antibody format is required.
Storage Instructions	Store at -20°C as received.
Host	Mouse
Uniprot ID	P19388

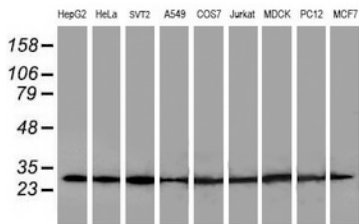
Technical Details

Immunogen	Full length human recombinant protein of human POLR2E (NP_002686) produced in HEK293T cell.
Isotype	IgG2a
Concentration	0.9 mg/ml
Purification	Purified from mouse ascites fluids or tissue culture supernatant by affinity chromatography (protein A/G)
Suggested Dilutions	WB 1:500~2000 IHC 1:150 Flow Cytometry 1:100 IF: 1:100

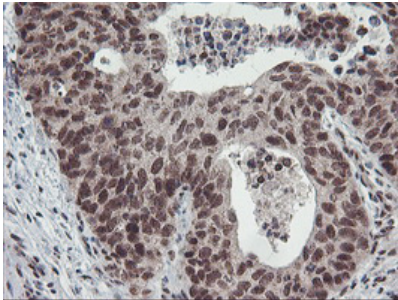
Anti-POLR2E Mouse Monoclonal Antibody [Clone ID: OTI3B5] (M08765) Images



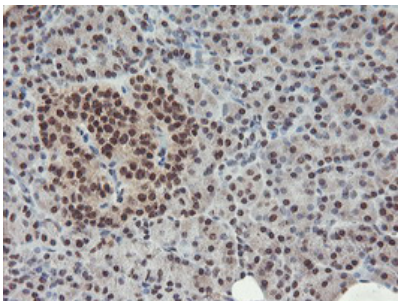
HEK293T cells were transfected with the pCMV6-ENTRY control (Left lane) or pCMV6-ENTRY POLR2E (Right lane) cDNA for 48 hrs and lysed. Equivalent amounts of cell lysates (5 ug per lane) were separated by SDS-PAGE and immunoblotted with anti-POLR2E.



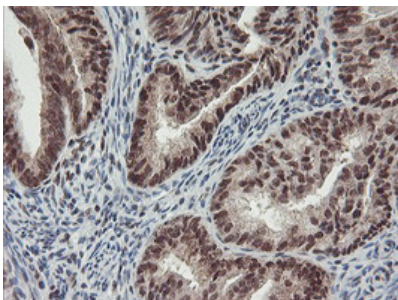
Western blot analysis of extracts (35ug) from 9 different cell lines by using anti-POLR2E monoclonal antibody.



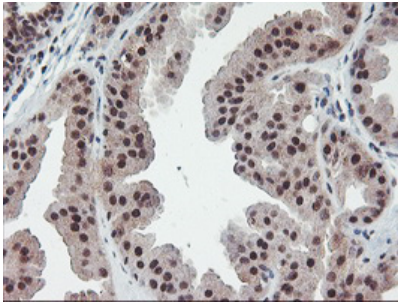
Immunohistochemical staining of paraffin-embedded Carcinoma of Human lung tissue using anti-POLR2E mouse monoclonal antibody. (Heat-induced epitope retrieval by 10mM citric buffer)



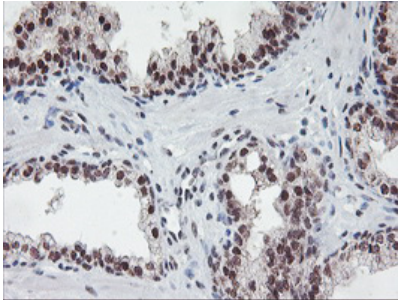
Immunohistochemical staining of paraffin-embedded Human pancreas tissue within the normal limits using anti-POLR2E mouse monoclonal antibody. (Heat-induced epitope retrieval by 10mM citric buffer)



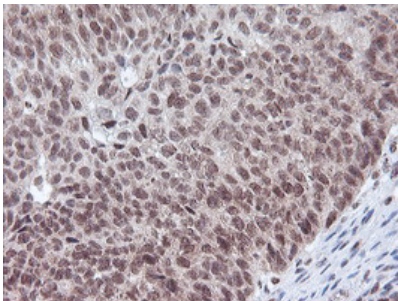
Immunohistochemical staining of paraffin-embedded Adenocarcinoma of Human endometrium tissue using anti-POLR2E mouse monoclonal antibody. (Heat-induced epitope retrieval by 10mM citric buffer)



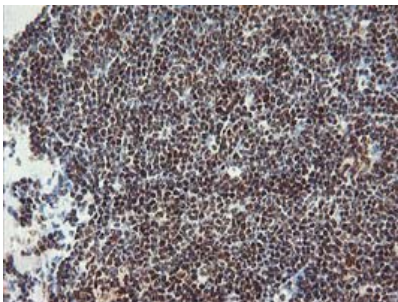
Immunohistochemical staining of paraffin-embedded Human breast tissue within the normal limits using anti-POLR2E mouse monoclonal antibody. (Heat-induced epitope retrieval by 10mM citric buffer)



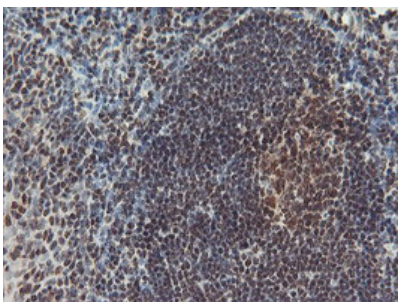
Immunohistochemical staining of paraffin-embedded Carcinoma of Human prostate tissue using anti-POLR2E mouse monoclonal antibody. (Heat-induced epitope retrieval by 10mM citric buffer)



Immunohistochemical staining of paraffin-embedded Carcinoma of Human bladder tissue using anti-POLR2E mouse monoclonal antibody. (Heat-induced epitope retrieval by 10mM citric buffer)

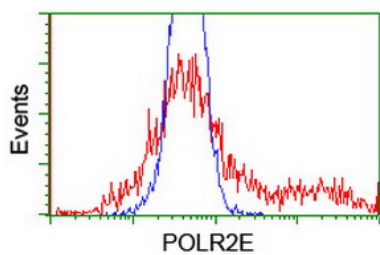


Immunohistochemical staining of paraffin-embedded Human lymphoma tissue using anti-POLR2E mouse monoclonal antibody. (Heat-induced epitope retrieval by 10mM citric buffer)

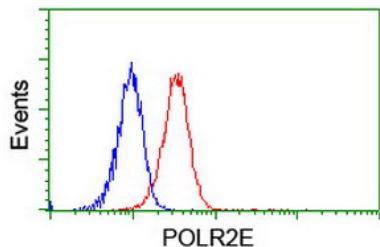


Immunohistochemical staining of paraffin-embedded Human tonsil within the normal limits using anti-POLR2E mouse monoclonal antibody. (Heat-induced epitope retrieval by 10mM citric buffer)

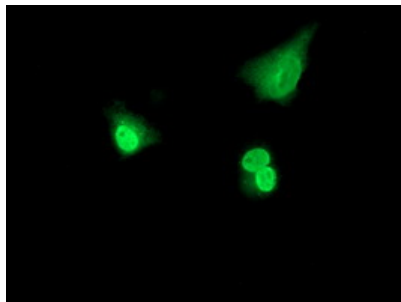
HEK293T cells transfected with either POLR2E (Myc-DDK-tagged) overexpress plasmid (Red) or empty vector control plasmid (Blue) were immunostained by anti-POLR2E



antibody (M08765)



Flow cytometric Analysis of Jurkat cells



Anti-POLR2E mouse monoclonal antibody (M08765) immunofluorescent staining of COS7 cells transiently transfected by pCMV6-ENTRY POLR2E.

Submit a product review to Biocompare.com

Submit a review of this product to Biocompare.com to receive a \$20 Amazon.com giftcard! Your reviews help your fellow scientists make the right decisions. Thank you for your contribution.



Anti-POLR2E Mouse Monoclonal Antibody [Clone ID: OT13B5]

For Research Use Only. Not for use in diagnostic procedures.