

Anti-PSMD3 Mouse Monoclonal Antibody [Clone ID: OTI2A2]

Catalog Number: M08767-1

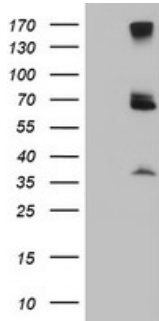
Overview

Product Name	Anti-PSMD3 Mouse Monoclonal Antibody [Clone ID: OTI2A2]
Reactive Species	Dog, Human, Monkey, Mouse, Rat
Description	Boster Bio PSMD3 mouse monoclonal antibody, clone OTI2A2 (formerly 2A2). Catalog# M08767-1. Tested in FC, WB. This antibody reacts with Human, Monkey, Mouse, Rat, Dog.
Application	Flow Cytometry, WB
Clonality	Monoclonal OTI2A2
Formulation	PBS (pH 7.3) containing 1% stabilizing protein, 50% glycerol and 0.02% sodium azide. This antibody is supplied in a stabilized formulation. Compatibility with conjugation reactions depends on the chemistry of the conjugation method used. For conjugation methods that are not compatible with the stabilizing components present in this formulation, a carrier-free antibody format is required.
Storage Instructions	Store at -20°C as received.
Host	Mouse
Uniprot ID	O43242

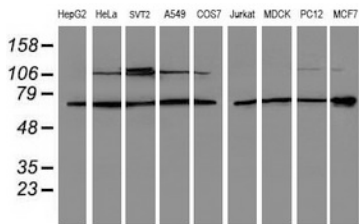
Technical Details

Immunogen	Full length human recombinant protein of human PSMD3 (NP_002800) produced in HEK293T cell.
Isotype	IgG2a
Concentration	0.95 mg/ml
Purification	Purified from mouse ascites fluids or tissue culture supernatant by affinity chromatography (protein A/G)
Suggested Dilutions	WB 1:500~2000 Flow Cytometry 1:100

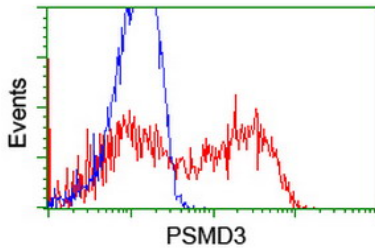
Anti-PSMD3 Mouse Monoclonal Antibody [Clone ID: OT12A2] (M08767-1) Images



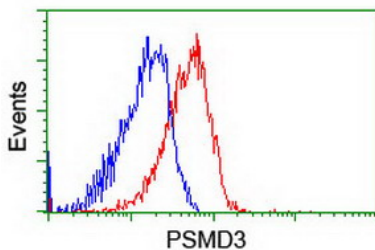
HEK293T cells were transfected with the pCMV6-ENTRY control (Left lane) or pCMV6-ENTRY PSMD3 (Right lane) cDNA for 48 hrs and lysed. Equivalent amounts of cell lysates (5 ug per lane) were separated by SDS-PAGE and immunoblotted with anti-PSMD3.



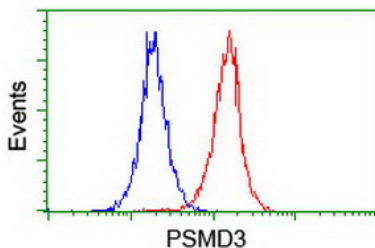
Western blot analysis of extracts (35ug) from 9 different cell lines by using anti-PSMD3 monoclonal antibody (HepG2: human; HeLa: human; SVT2: mouse; A549: human; COS7: monkey; Jurkat: human; MDCK: canine; PC12: rat; MCF7: human).



HEK293T cells transfected with either PSMD3 (Myc-DDK-tagged) overexpress plasmid (Red) or empty vector control plasmid (Blue) were immunostained by anti-PSMD3 antibody (M08767-1)



Flow cytometric Analysis of HeLa cells



Flow cytometric Analysis of Jurkat cells

Submit a product review to Biocompare.com



Submit a review of this product to Biocompare.com to receive a \$20 Amazon.com giftcard! Your reviews help your fellow scientists make the right decisions. Thank you for your contribution.

Anti-PSMD3 Mouse Monoclonal Antibody [Clone ID: OTI2A2]

For Research Use Only. Not for use in diagnostic procedures.