

Anti-Cytohesin 2 (CYTH2) Mouse Monoclonal Antibody [Clone ID: OTI4D9]

Catalog Number: M08775

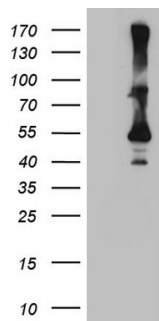
Overview

| | |
|----------------------|--|
| Product Name | Anti-Cytohesin 2 (CYTH2) Mouse Monoclonal Antibody [Clone ID: OTI4D9] |
| Reactive Species | Human, Mouse, Rat |
| Description | Boster Bio CYTH2 mouse monoclonal antibody, clone OTI4D9. Catalog# M08775. Tested in IHC, WB. This antibody reacts with Human, Mouse, Rat. |
| Application | IHC, WB |
| Clonality | Monoclonal OTI4D9 |
| Formulation | PBS (PH 7.3) containing 1% BSA, 50% glycerol and 0.02% sodium azide. |
| Storage Instructions | Store at -20°C as received. |
| Host | Mouse |
| Uniprot ID | Q99418 |

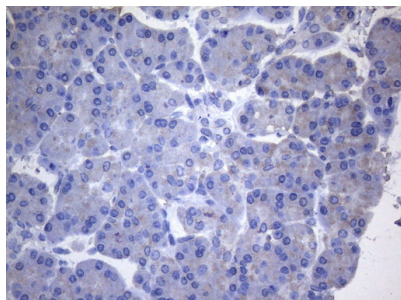
Technical Details

| | |
|---------------------|--|
| Immunogen | Full length human recombinant protein of human CYTH2 (NP_059431) produced in HEK293T cell. |
| Isotype | IgG1 |
| Concentration | 1 mg/ml |
| Purification | Purified from mouse ascites fluids or tissue culture supernatant by affinity chromatography (protein A/G) |
| Suggested Dilutions | Dilute the sample so that the expected range of concentrations fall within the detection range of this kit. If the expected range of concentration is unknown, a pilot test should be conducted to decide the optimal dilution ratio for your samples. Some PubMed article(s) citing the expression level of this target are as follows: |

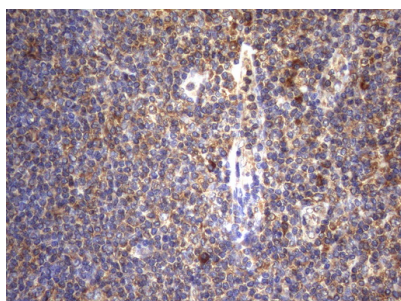
Anti-Cytohesin 2 (CYTH2) Mouse Monoclonal Antibody [Clone ID: OTI4D9] (M08775) Images



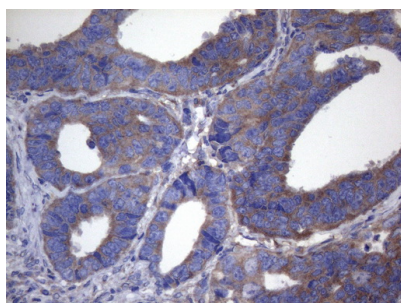
HEK293T cells were transfected with the pCMV6-ENTRY control (Left lane) or pCMV6-ENTRY CYTH2 (Right lane) cDNA for 48 hrs and lysed. Equivalent amounts of cell lysates (5 ug per lane) were separated by SDS-PAGE and immunoblotted with anti-CYTH2 (1:2000).



Immunohistochemical staining of paraffin-embedded Human pancreas tissue within the normal limits using anti-CYTH2 mouse monoclonal antibody. (Heat-induced epitope retrieval by 1mM EDTA in 10mM Tris buffer (pH8.5) at 120°C for 3min)



Immunohistochemical staining of paraffin-embedded Human tonsil within the normal limits using anti-CYTH2 mouse monoclonal antibody. (Heat-induced epitope retrieval by 1mM EDTA in 10mM Tris buffer (pH8.5) at 120°C for 3min)



Immunohistochemical staining of paraffin-embedded Adenocarcinoma of Human colon tissue using anti-CYTH2 mouse monoclonal antibody. (Heat-induced epitope retrieval by 1mM EDTA in 10mM Tris buffer (pH8.5) at 120°C for 3min)

Submit a product review to Biocompare.com

Submit a review of this product to Biocompare.com to receive a \$20 Amazon.com giftcard! Your reviews help your fellow scientists make the right decisions. Thank you for your contribution.



Anti-Cytohesin 2 (CYTH2) Mouse Monoclonal Antibody [Clone ID: OTI4D9]