

Anti-TUBA8 Mouse Monoclonal Antibody [Clone ID: OTI2G6]

Catalog Number: M08793-1

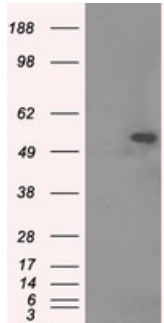
Overview

Product Name	Anti-TUBA8 Mouse Monoclonal Antibody [Clone ID: OTI2G6]
Reactive Species	Dog, Human, Monkey, Mouse, Rat
Description	Boster Bio Anti-TUBA8 mouse monoclonal antibody, clone OTI2G6 (formerly 2G6). Catalog# M08793-1. Tested in IF, IHC, IP, WB. This antibody reacts with Human, Monkey, Mouse, Rat, Dog.
Application	IP, IF, IHC, WB
Clonality	Monoclonal OTI2G6
Formulation	PBS (pH 7.3) containing 1% stabilizing protein, 50% glycerol and 0.02% sodium azide. This antibody is supplied in a stabilized formulation. Compatibility with conjugation reactions depends on the chemistry of the conjugation method used. For conjugation methods that are not compatible with the stabilizing components present in this formulation, a carrier-free antibody format is required.
Storage Instructions	Store at -20°C as received.
Host	Mouse
Uniprot ID	Q9NY65

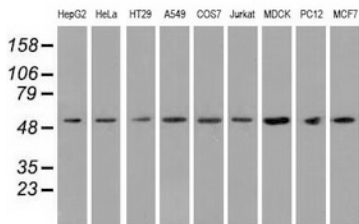
Technical Details

Immunogen	Full length human recombinant protein of human TUBA8 (NP_061816) produced in HEK293T cell.
Isotype	IgG2a
Concentration	0.82 mg/ml
Purification	Purified from mouse ascites fluids or tissue culture supernatant by affinity chromatography (protein A/G)
Suggested Dilutions	WB 1:2000 IHC: 1:50-1:150 IF 1:100 Flow Cytometry 1:100

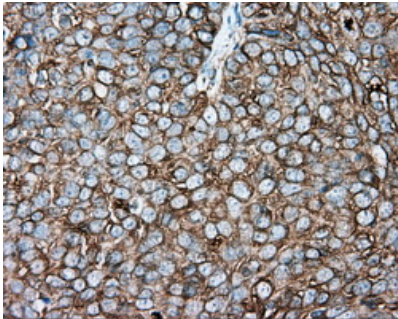
Anti-TUBA8 Mouse Monoclonal Antibody [Clone ID: OTI2G6] (M08793-1) Images



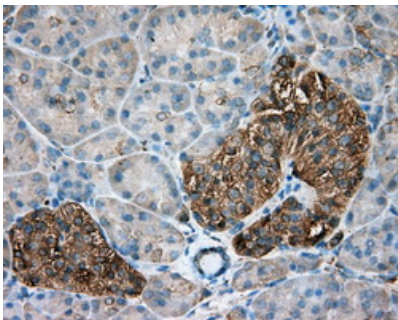
HEK293T cells were transfected with the pCMV6-ENTRY control (Left lane) or pCMV6-ENTRY TUBA8 (Right lane) cDNA for 48 hrs and lysed. Equivalent amounts of cell lysates (5 ug per lane) were separated by SDS-PAGE and immunoblotted with anti-TUBA8.



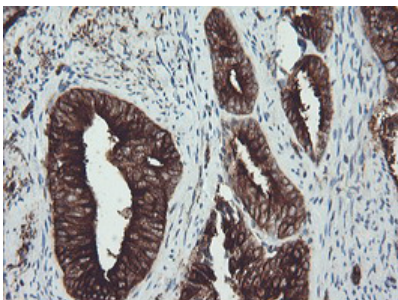
WB analysis of extracts (35ug) from 9 different cell lines by using anti-TUBA8 monoclonal antibody.



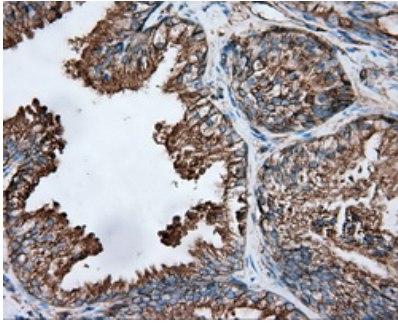
Immunohistochemical staining of paraffin-embedded Adenocarcinoma of ovary tissue using anti-TUBA8 mouse monoclonal antibody. (Heat-induced epitope retrieval by 10mM citric buffer)



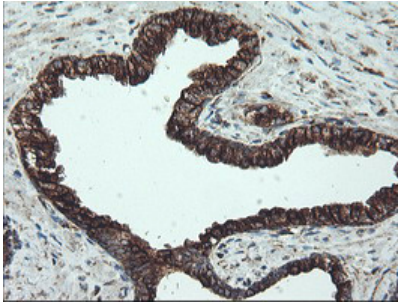
Immunohistochemical staining of paraffin-embedded pancreas tissue within the normal limits using anti-TUBA8 mouse monoclonal antibody. (Heat-induced epitope retrieval by 10mM citric buffer)



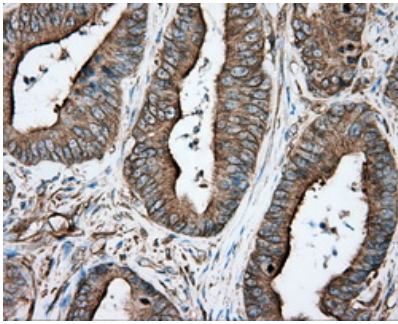
Immunohistochemical staining of paraffin-embedded Adenocarcinoma of Human endometrium tissue using anti-TUBA8 mouse monoclonal antibody. (M08793-1)



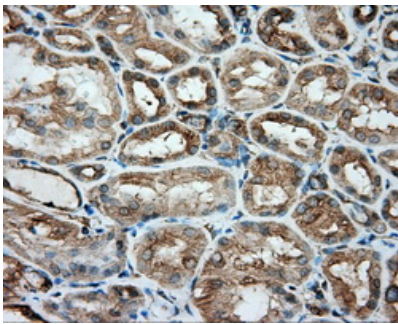
Immunohistochemical staining of paraffin-embedded prostate tissue within the normal limits using anti-TUBA8 mouse monoclonal antibody. (Heat-induced epitope retrieval by 10mM citric buffer)



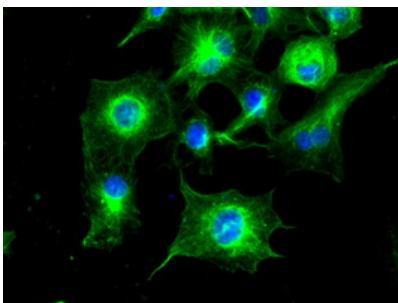
Immunohistochemical staining of paraffin-embedded Carcinoma of Human prostate tissue using anti-TUBA8 mouse monoclonal antibody. (M08793-1)



Immunohistochemical staining of paraffin-embedded Adenocarcinoma of colon tissue using anti-TUBA8 mouse monoclonal antibody. (Heat-induced epitope retrieval by 10mM citric buffer)



Immunohistochemical staining of paraffin-embedded Kidney tissue within the normal limits using anti-TUBA8 mouse monoclonal antibody. (Heat-induced epitope retrieval by 10mM citric buffer)



Anti-TUBA8 mouse monoclonal antibody (M08793-1) immunofluorescent staining of COS7 cells transiently transfected by pCMV6-ENTRY TUBA8.

Submit a product review to Biocompare.com

Submit a review of this product to Biocompare.com to receive a \$20 Amazon.com giftcard! Your reviews help your fellow scientists make the right decisions. Thank you for your contribution.



Anti-TUBA8 Mouse Monoclonal Antibody [Clone ID: OT12G6]

For Research Use Only. Not for use in diagnostic procedures.