

## Anti-MTBP Monoclonal Antibody

Catalog Number: M08842

### About MTBP

The MDM2 onco-protein is over expressed in human cancer cells and it promotes tumorigenesis by directly blocking the function of the p53 tumor suppressor. Studies also indicate that MDM2 regulates cell proliferation via p53 independent mechanisms. MTBP (Mdm2 [Two] Binding Protein) was identified by a yeast two-hybrid screen as an MDM2 binding protein (1). MTBP has been reported to modulate cell cycle progression by a p53 independent mechanism and suppress MDM2-mediated p53 degradation when ectopically expressed in cells (1,2). The human MTBP gene localizes to 8q24 (3) and MTBP RNA is expressed in a wide range of tissues, with highest being in the thymus, testes and ovaries (1).

### Overview

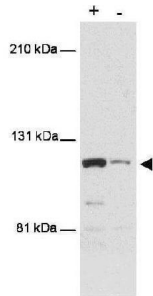
Product Name	Anti-MTBP Monoclonal Antibody
Reactive Species	Human
Description	Boster Bio Anti-MTBP Monoclonal Antibody (Catalog # M08842). Tested in ELISA, WB applications. This antibody reacts with Human.
Application	ELISA, WB
Clonality	Monoclonal Clone: PHL-1
Formulation	0.02 M Potassium Phosphate, 0.15 M Sodium Chloride, pH 7.2, 0.01% (w/v) Sodium Azide
Storage Instructions	Store vial at -20°C prior to opening. Aliquot contents and freeze at -20°C or below for extended storage. Avoid cycles of freezing and thawing. Centrifuge product if not completely clear after standing at room temperature. This product is stable for several weeks at 4°C as an undiluted liquid. Dilute only prior to immediate use. Expiration date is one (1) year from date of opening. (Ship on dry ice.)
Host	Mouse
Uniprot ID	Q96DY7

### Technical Details

Immunogen	This monoclonal antibody was produced by repeated immunizations with a recombinant amino-terminal HIS <sub>6x</sub> -tagged polypeptide corresponding to amino acid residues 667-812 of human MTBP protein.
Predicted Reactive Species	Chimpanzee
Cross Reactivity	No cross reactivity with other proteins.
Isotype	IgG1 kappa
Form	Liquid (sterile filtered)

Concentration	Neat N/A
Purification	This antibody is directed against human MTBP protein. The product was produced from clarified mouse ascetic fluid. A BLAST analysis was used to suggest reactivity with this protein from human (100% homology) and chimpanzee. Cross-reactivity with MTBP protein from mouse (77% homology) and chicken (79% homology) is unlikely due to the relatively low number of positive residues and high number of gaps within this sequence. Cross-reactivity with MTBP homologues from other sources has not been determined.
Suggested Dilutions	ELISA: 1:2,000 - 1:20,000 WB: 1:200 - 1:2,000 This antibody has been tested for use in ELISA and western blot. Specific conditions for reactivity should be optimized by the end user. Expect a band ~ 110 kDa in size corresponding to MTBP by western blotting in the appropriate cell lysate or extract.

## Anti-MTBP Monoclonal Antibody (M08842) Images



Western blot using Boster's anti-MTBP antibody shows detection of a band ~110 kDa corresponding to human MTBP (arrowhead). Lanes represent human 293 cell lysates with (+) and without (-) transfection with a full-length human expression MTBP construct. The transfected cell extract was diluted 30 fold in extract lacking transfected MTBP. Proteins were separated by SDS-PAGE and transferred onto PDVF membrane. After blocking, the membrane was probed with the primary antibody diluted to 1:500 for 2h at room temperature followed by detection using a Lumi-LightPlus Western Blotting Kit (Roche).

### Submit a product review to [Biocompare.com](https://www.biocompare.com)

Submit a review of this product to [Biocompare.com](https://www.biocompare.com) to receive a \$20 Amazon.com giftcard! Your reviews help your fellow scientists make the right decisions. Thank you for your contribution.



### Anti-MTBP Monoclonal Antibody

For Research Use Only. Not for use in diagnostic procedures.