

Anti-ALDH6A1 Antibody

Catalog Number: M08868

About ALDH6A1

This protein belongs to the aldehyde dehydrogenases family of proteins. This enzyme plays a role in the valine and pyrimidine catabolic pathways. The product of this gene, a mitochondrial methylmalonate semialdehyde dehydrogenase, catalyzes the irreversible oxidative decarboxylation of malonate and methylmalonate semialdehydes to acetyl- and propionyl-CoA. Methylmalonate semialdehyde dehydrogenase deficiency is characterized by elevated beta-alanine, 3-hydroxypropionic acid, and both isomers of 3-amino and 3-hydroxyisobutyric acids in urine organic acids.

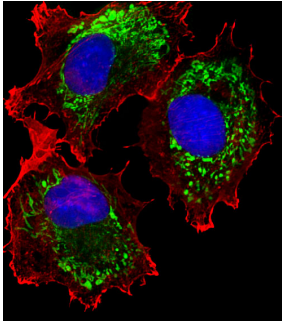
Overview

Product Name	Anti-ALDH6A1 Antibody
Reactive Species	Human
Description	Boster Bio Anti-ALDH6A1 Antibody (Catalog # M08868). Tested in WB, IF, IHC-P application(s). This antibody reacts with Human.
Application	IF, IHC-P, WB
Clonality	Monoclonal 147CT8.3.4
Formulation	Purified monoclonal antibody supplied in PBS with 0.09% (W/V) sodium azide.
Storage Instructions	Maintain refrigerated at 2-8°C for up to 2 weeks. For long-term storage, store at -20°C in small aliquots to prevent freeze-thaw cycles.
Host	Mouse
Uniprot ID	Q02252

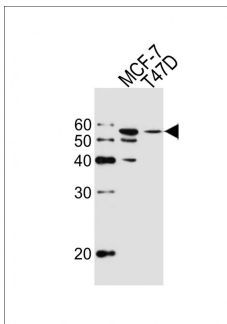
Technical Details

Immunogen	This ALDH6A1 antibody is generated from mouse immunized with ALDH6A1 recombinant protein.
Predicted Reactive Species	Bovine
Isotype	IgG1,IgK
Purification	This antibody is purified through a protein G column, followed by dialysis against PBS.
Suggested Dilutions	IF: 1:25 WB: 1:1000 IHC-P: 1:25

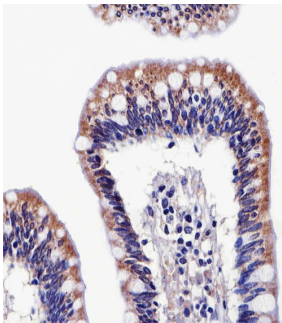
Anti-ALDH6A1 Antibody (M08868) Images



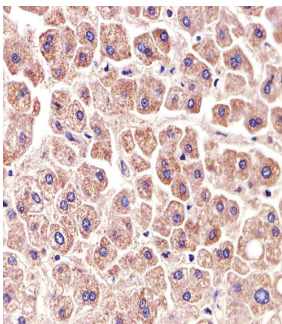
Fluorescent image of MCF-7 cells stained with ALDH6A1 Antibody. M08868 was diluted at 1:25 dilution. An Alexa Fluor® 488-conjugated goat anti-mouse IgG at 1:400 dilution was used as the secondary antibody (green). DAPI was used to stain the cell nuclear (blue). Cytoplasmic actin was counterstained with Alexa Fluor® 555 conjugated with Phalloidin (red).



Western blot analysis of lysates from MCF-7, T47D cell line (from left to right), using ALDH6A1 Antibody. M08868 was diluted at 1:1000 at each lane. A goat anti-mouse IgG H&L(HRP) at 1:10000 dilution was used as the secondary antibody. Lysates at 20ug per lane.



Immunohistochemical analysis of paraffin-embedded H.colon section using ALDH6A1 Antibody. M08868 was diluted at 1:25 dilution. A peroxidase-conjugated goat anti-mouse IgG at 1:400 dilution was used as the secondary antibody, followed by DAB staining.



Immunohistochemical analysis of paraffin-embedded H.liver section using ALDH6A1 Antibody. M08868 was diluted at 1:25 dilution. A peroxidase-conjugated goat anti-mouse IgG at 1:400 dilution was used as the secondary antibody, followed by DAB staining.

Submit a product review to Biocompare.com

Submit a review of this product to Biocompare.com to receive a \$20 Amazon.com giftcard! Your reviews help your fellow scientists make the right decisions. Thank you for your contribution.



Anti-ALDH6A1 Antibody

For Research Use Only. Not for use in diagnostic procedures.