

## Anti-CUEDC2 Mouse Monoclonal Antibody [Clone ID: OTI2H6]

Catalog Number: M08885

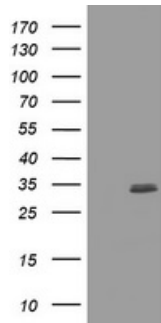
### Overview

Product Name	Anti-CUEDC2 Mouse Monoclonal Antibody [Clone ID: OTI2H6]
Reactive Species	Human, Mouse, Rat
Description	Boster Bio CUEDC2 mouse monoclonal antibody, clone OTI2H6. Catalog# M08885. Tested in WB. This antibody reacts with Human, Mouse, Rat.
Application	WB
Clonality	Monoclonal OTI2H6
Formulation	PBS (pH 7.3) containing 1% stabilizing protein, 50% glycerol and 0.02% sodium azide. This antibody is supplied in a stabilized formulation. Compatibility with conjugation reactions depends on the chemistry of the conjugation method used. For conjugation methods that are not compatible with the stabilizing components present in this formulation, a carrier-free antibody format is required.
Storage Instructions	Store at -20°C as received.
Host	Mouse
Uniprot ID	Q9H467

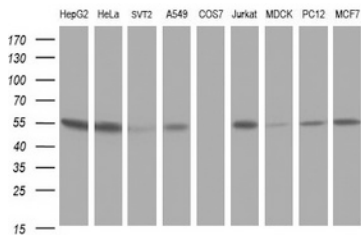
### Technical Details

Immunogen	Full length human recombinant protein of human CUEDC2 (NP_076945) produced in E.coli.
Isotype	IgG1
Concentration	1 mg/ml
Purification	Purified from mouse ascites fluids or tissue culture supernatant by affinity chromatography (protein A/G)
Suggested Dilutions	WB: 1:2000

## Anti-CUEDC2 Mouse Monoclonal Antibody [Clone ID: OTI2H6] (M08885) Images



HEK293T cells were transfected with the pCMV6-ENTRY control (Left lane) or pCMV6-ENTRY CUEDC2 (Right lane) cDNA for 48 hrs and lysed. Equivalent amounts of cell lysates (5 ug per lane) were separated by SDS-PAGE and immunoblotted with anti-CUEDC2.



Western blot analysis of extracts (35ug) from 9 different cell lines by using anti-CUEDC2 monoclonal antibody (HepG2: human; HeLa: human; SVT2: mouse; A549: human; COS7: monkey; Jurkat: human; MDCK: canine; PC12: rat; MCF7: human).

### Submit a product review to [Biocompare.com](https://www.biocompare.com)

Submit a review of this product to [Biocompare.com](https://www.biocompare.com) to receive a \$20 Amazon.com giftcard! Your reviews help your fellow scientists make the right decisions. Thank you for your contribution.



Anti-CUEDC2 Mouse Monoclonal Antibody [Clone ID: OTI2H6]

For Research Use Only. Not for use in diagnostic procedures.