

Anti-PSMA2 Mouse Monoclonal Antibody [Clone ID: OTI3D9]

Catalog Number: M08901

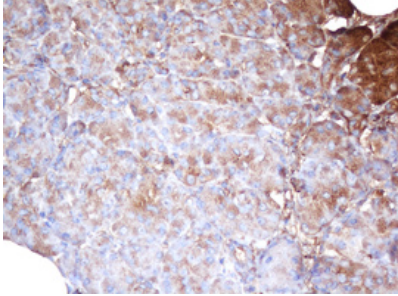
Overview

Product Name	Anti-PSMA2 Mouse Monoclonal Antibody [Clone ID: OTI3D9]
Reactive Species	Dog, Human, Monkey, Mouse, Rat
Description	Boster Bio PSMA2 (Proteasome 20S alpha 2) mouse monoclonal antibody, clone OTI3D9 (formerly 3D9). Catalog# M08901. Tested in IHC, WB. This antibody reacts with Human, Monkey, Mouse, Rat, Dog.
Conjugate	Unconjugated
Application	IHC, WB
Clonality	Monoclonal OTI3D9
Formulation	PBS (pH 7.3) containing 1% stabilizing protein, 50% glycerol and 0.02% sodium azide. This antibody is supplied in a stabilized formulation. Compatibility with conjugation reactions depends on the chemistry of the conjugation method used. For conjugation methods that are not compatible with the stabilizing components present in this formulation, a carrier-free antibody format is required.
Storage Instructions	Store at -20°C for one year. For short term storage and frequent use, store at 4°C for up to one month. Avoid repeated freeze-thaw cycles.
Host	Mouse
Uniprot ID	P25787

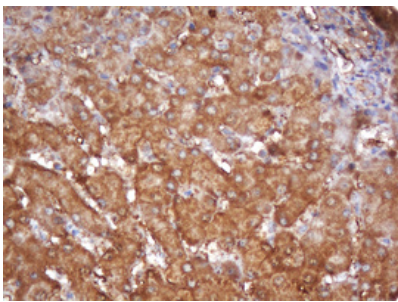
Technical Details

Immunogen	Human recombinant protein fragment corresponding to amino acids 50-234 of human PSMA2 (NP_002778) produced in E.coli.
Isotype	IgG2b
Concentration	1 mg/ml
Purification	Purified from mouse ascites fluids or tissue culture supernatant by affinity chromatography (protein A/G)
Suggested Dilutions	WB 1:2000 IHC 1:500

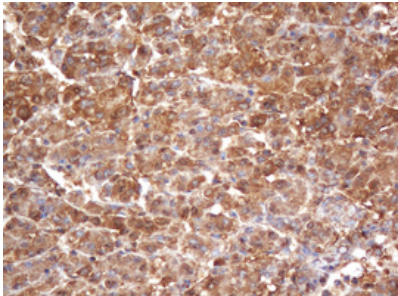
Anti-PSMA2 Mouse Monoclonal Antibody [Clone ID: OTI3D9] (M08901) Images



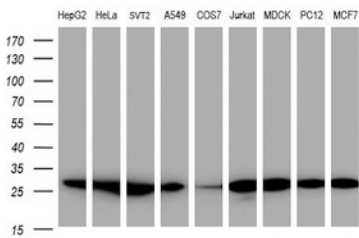
Immunohistochemical staining of paraffin-embedded Human pancreas tissue within the normal limits using anti-PSMA2 mouse monoclonal antibody. (M08901; heat-induced epitope retrieval by 10mM citric buffer)



Immunohistochemical staining of paraffin-embedded Human liver tissue within the normal limits using anti-PSMA2 mouse monoclonal antibody. (M08901; heat-induced epitope retrieval by 10mM citric buffer)



Immunohistochemical staining of paraffin-embedded Carcinoma of Human liver tissue using anti-PSMA2 mouse monoclonal antibody. (M08901; heat-induced epitope retrieval by 10mM citric buffer)



Western blot analysis of extracts (35ug) from 9 different cell lines by using anti-PSMA2 monoclonal antibody (HepG2: human; HeLa: human; SVT2: mouse; A549: human; COS7: monkey; Jurkat: human; MDCK: canine; PC12: rat; MCF7: human).

Submit a product review to [Biocompare.com](https://www.biocompare.com)

Submit a review of this product to [Biocompare.com](https://www.biocompare.com) to receive a \$20 Amazon.com giftcard! Your reviews help your fellow scientists make the right decisions. Thank you for your contribution.



Anti-PSMA2 Mouse Monoclonal Antibody [Clone ID: OTI3D9]

For Research Use Only. Not for use in diagnostic procedures.