

Anti-Prominin 2 (PROM2) Mouse Monoclonal Antibody [Clone ID: OTI3D12]

Catalog Number: M08947

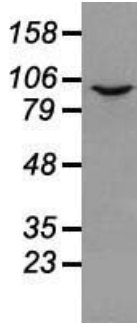
Overview

Product Name	Anti-Prominin 2 (PROM2) Mouse Monoclonal Antibody [Clone ID: OTI3D12]
Reactive Species	Human
Description	Boster Bio Anti-PROM2 (Prominin 2) mouse monoclonal antibody, clone OTI3D12 (formerly 3D12). Catalog# M08947. Tested in IF, WB. This antibody reacts with Human.
Application	IF, WB
Clonality	Monoclonal OTI3D12
Formulation	PBS (pH 7.3) containing 1% stabilizing protein, 50% glycerol and 0.02% sodium azide This antibody is supplied in a stabilized formulation. Compatibility with conjugation reactions depends on the chemistry of the conjugation method used. For conjugation methods that are not compatible with the stabilizing components present in this formulation, a carrier-free antibody format is required.
Storage Instructions	Store at -20°C as received.
Host	Mouse
Uniprot ID	Q8N271

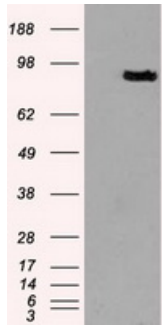
Technical Details

Immunogen	Full-length protein expressed in 293T cell transfected with human PROM2 expression vector
Isotype	IgG2b
Concentration	1 mg/ml
Purification	Purified from mouse ascites fluids or tissue culture supernatant by affinity chromatography (protein A/G)
Suggested Dilutions	WB 1:2000 IF 1:100

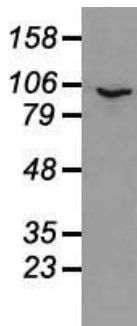
Anti-Prominin 2 (PROM2) Mouse Monoclonal Antibody [Clone ID: OTI3D12] (M08947) Images



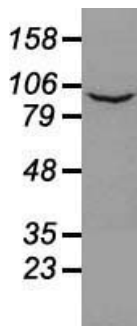
Western blot analysis of 35ug of cell extracts from canine Kidney (MDCK) cells using anti-PROM2 antibody.



HEK293T cells were transfected with the pCMV6-ENTRY control (Left lane) or pCMV6-ENTRY PROM2 (Right lane) cDNA for 48 hrs and lysed. Equivalent amounts of cell lysates (5 ug per lane) were separated by SDS-PAGE and immunoblotted with anti-PROM2.

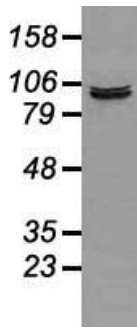


Western blot analysis of 35ug of cell extracts from human Liver carcinoma (HepG2) cells using anti-PROM2 antibody.

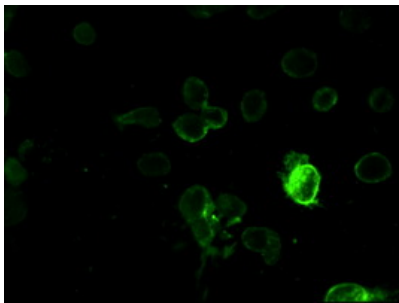
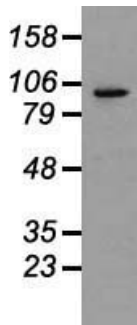


Western blot analysis of 35ug of cell extracts from human (HeLa) cells using anti-PROM2 antibody.

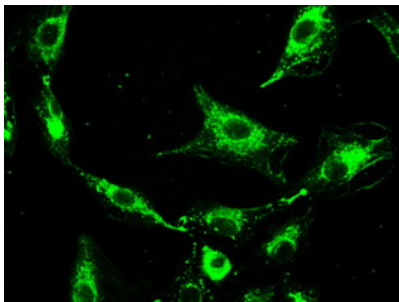
Western blot analysis of 35ug of cell extracts from human colon adenocarcinoma (HT29) cells using anti-PROM2 antibody.



Western blot analysis of 35ug of cell extracts from human Lung adenocarcinoma (A549) cells using anti-PROM2 antibody.



Immunofluorescent staining of Cos7 cells using anti-PROM2 mouse monoclonal antibody (M08947).



Immunofluorescent staining of A549 cells using anti-PROM2 mouse monoclonal antibody (M08947).

Submit a product review to Biocompare.com

Submit a review of this product to Biocompare.com to receive a \$20 Amazon.com giftcard! Your reviews help your fellow scientists make the right decisions. Thank you for your contribution.



Anti-Prominin 2 (PROM2) Mouse Monoclonal Antibody [Clone ID: OTI3D12]

For Research Use Only. Not for use in diagnostic procedures.