

## Anti-PDE6 gamma (PDE6G) Mouse Monoclonal Antibody [Clone ID: OTI1F3]

Catalog Number: M08964

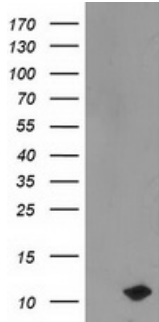
### Overview

Product Name	Anti-PDE6 gamma (PDE6G) Mouse Monoclonal Antibody [Clone ID: OTI1F3]
Reactive Species	Human, Mouse, Rat
Description	Boster Bio PDE6G (PDE6 gamma) mouse monoclonal antibody, clone OTI1F3 (formerly 1F3). Catalog# M08964. Tested in FC, WB. This antibody reacts with Human, Mouse, Rat.
Application	Flow Cytometry, WB
Clonality	Monoclonal OTI1F3
Formulation	PBS (pH 7.3) containing 1% stabilizing protein, 50% glycerol and 0.02% sodium azide. This antibody is supplied in a stabilized formulation. Compatibility with conjugation reactions depends on the chemistry of the conjugation method used. For conjugation methods that are not compatible with the stabilizing components present in this formulation, a carrier-free antibody format is required.
Storage Instructions	Store at -20°C as received.
Host	Mouse
Uniprot ID	P18545

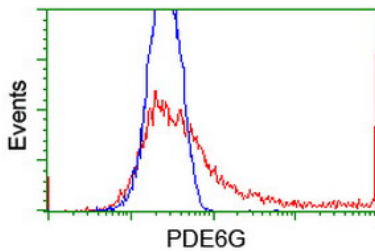
### Technical Details

Immunogen	Full length human recombinant protein of human PDE6G (NP_002593) produced in HEK293T cell.
Isotype	IgG2a
Concentration	0.74 mg/ml
Purification	Purified from mouse ascites fluids or tissue culture supernatant by affinity chromatography (protein A/G)
Suggested Dilutions	WB 1:2000 Flow Cytometry 1:100

## Anti-PDE6 gamma (PDE6G) Mouse Monoclonal Antibody [Clone ID: OTI1F3] (M08964) Images



HEK293T cells were transfected with the pCMV6-ENTRY control (Left lane) or pCMV6-ENTRY PDE6G (Right lane) cDNA for 48 hrs and lysed. Equivalent amounts of cell lysates (5 ug per lane) were separated by SDS-PAGE and immunoblotted with anti-PDE6G.



HEK293T cells transfected with either PDE6G (Myc-DDK-tagged) overexpress plasmid (Red) or empty vector control plasmid (Blue) were immunostained by anti-PDE6G antibody (M08964)

### Submit a product review to [Biocompare.com](https://www.biocompare.com)

Submit a review of this product to [Biocompare.com](https://www.biocompare.com) to receive a \$20 Amazon.com giftcard! Your reviews help your fellow scientists make the right decisions. Thank you for your contribution.



Anti-PDE6 gamma (PDE6G) Mouse Monoclonal Antibody [Clone ID: OTI1F3]

For Research Use Only. Not for use in diagnostic procedures.