

Anti-NEMF Mouse Monoclonal Antibody [Clone ID: OTI7E10]

Catalog Number: M09039

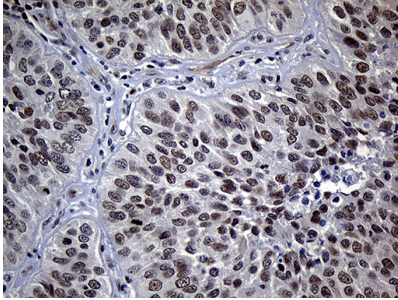
Overview

Product Name	Anti-NEMF Mouse Monoclonal Antibody [Clone ID: OTI7E10]
Reactive Species	Human, Mouse, Rat
Description	Boster Bio NEMF mouse monoclonal antibody, clone OTI7E10. Catalog# M09039. Tested in IHC. This antibody reacts with Human, Mouse, Rat.
Application	IHC
Clonality	Monoclonal OTI7E10
Formulation	PBS (pH 7.3) containing 1% stabilizing protein, 50% glycerol and 0.02% sodium azide. This antibody is supplied in a stabilized formulation. Compatibility with conjugation reactions depends on the chemistry of the conjugation method used. For conjugation methods that are not compatible with the stabilizing components present in this formulation, a carrier-free antibody format is required.
Storage Instructions	Store at -20°C as received.
Host	Mouse
Uniprot ID	O60524

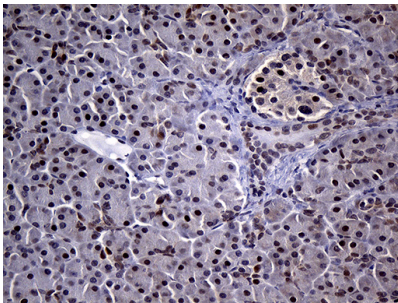
Technical Details

Immunogen	Human recombinant protein fragment corresponding to amino acids 869-1076 of human NEMF (NP_004704) produced in E.coli.
Isotype	IgG2a
Concentration	1 mg/ml
Purification	Purified from mouse ascites fluids or tissue culture supernatant by affinity chromatography (protein A/G)
Suggested Dilutions	IHC: 1:250

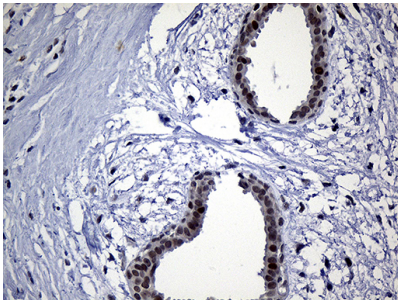
Anti-NEMF Mouse Monoclonal Antibody [Clone ID: OTI7E10] (M09039) Images



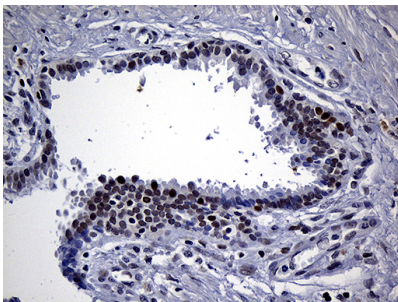
Immunohistochemical staining of paraffin-embedded Carcinoma of Human lung tissue using anti-NEMF mouse monoclonal antibody. (Heat-induced epitope retrieval by 1mM EDTA in 10mM Tris buffer (pH8.5) at 120°C for 3min)



Immunohistochemical staining of paraffin-embedded Human pancreas tissue within the normal limits using anti-NEMF mouse monoclonal antibody. (Heat-induced epitope retrieval by 1mM EDTA in 10mM Tris buffer (pH8.5) at 120°C for 3min)



Immunohistochemical staining of paraffin-embedded Human breast tissue within the normal limits using anti-NEMF mouse monoclonal antibody. (Heat-induced epitope retrieval by 1mM EDTA in 10mM Tris buffer (pH8.5) at 120°C for 3min)



Immunohistochemical staining of paraffin-embedded Carcinoma of Human prostate tissue using anti-NEMF mouse monoclonal antibody. (Heat-induced epitope retrieval by 1mM EDTA in 10mM Tris buffer (pH8.5) at 120°C for 3min)

Submit a product review to [Biocompare.com](https://www.biocompare.com)

Submit a review of this product to [Biocompare.com](https://www.biocompare.com) to receive a \$20 Amazon.com giftcard! Your reviews help your fellow scientists make the right decisions. Thank you for your contribution.



Anti-NEMF Mouse Monoclonal Antibody [Clone ID: OTI7E10]

For Research Use Only. Not for use in diagnostic procedures.