

Anti-CLEC11A Antibody

Catalog Number: M09076

About CLEC11A

Stimulates the proliferation and differentiation of hematopoietic precursor cells from various lineages, including erythrocytes, lymphocytes, granulocytes and macrophages. Acts synergistically with other cytokines, including IL-3, GCSF, GMCSF and FLT3 ligand. Suppresses SCF-stimulated erythrocyte proliferation.

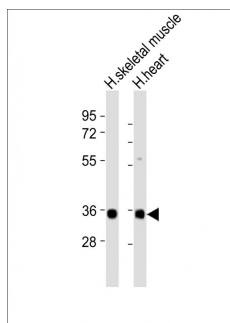
Overview

Product Name	Anti-CLEC11A Antibody
Reactive Species	Human
Description	Boster Bio Anti-CLEC11A Antibody (Catalog # M09076). Tested in WB application(s). This antibody reacts with Human.
Application	WB
Clonality	Polyclonal
Formulation	Purified polyclonal antibody supplied in PBS with 0.09% (W/V) sodium azide.
Storage Instructions	Maintain refrigerated at 2-8°C for up to 2 weeks. For long-term storage, store at -20°C in small aliquots to prevent freeze-thaw cycles.
Host	Rabbit
Uniprot ID	Q9Y240

Technical Details

Immunogen	This CLEC11A antibody is generated from a rabbit immunized with a recombinant protein.
Predicted Reactive Species	Bovine
Isotype	Rabbit IgG
Purification	This antibody is purified through a protein A column, followed by peptide affinity purification.
Suggested Dilutions	WB: 1:2000

Anti-CLEC11A Antibody (M09076) Images



All lanes : Anti-CLEC11A Antibody at 1:2000 dilution
Lane 1: human skeletal muscle lysates
Lane 2: human heart lysates
Lysates/proteins at 20 µg per lane. Secondary Goat Anti-Rabbit IgG, (H+L), Peroxidase conjugated at 1/10000 dilution
Predicted band size : 36 kDa
Blocking/Dilution buffer: 5% NFD/MTBST.

Submit a product review to Biocompare.com

Submit a review of this product to Biocompare.com to receive a \$20 Amazon.com giftcard! Your reviews help your fellow scientists make the right decisions. Thank you for your contribution.



Anti-CLEC11A Antibody

For Research Use Only. Not for use in diagnostic procedures.