

Anti-CLDN18.2 Reference Antibody (zolbetuximab)

Catalog Number: M09129-1

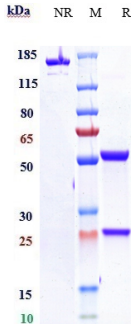
Overview

Product Name	Anti-CLDN18.2 Reference Antibody (zolbetuximab)
Reactive Species	Human, Mouse
Description	Boster Bio Anti-CLDN18.2 Reference Antibody (zolbetuximab) (Catalog # M09129-1). Tested in Flow Cytometry, ELISA, FTA. This antibody reacts with Human, Mouse. Endotoxin: < 0.954EU/ug,determined by LAL method. Expression system: CHO Cell
Application	ELISA, Flow Cytometry, Functional Assay, Kinetics
Clonality	Monoclonal
Formulation	Purified monoclonal antibody supplied in PBS, pH6.0, without preservative.This antibody is purified through a protein A column.
Storage Instructions	Maintain refrigerated at 2-8°C for up to 2 weeks. For long-term storage, aliquot and store at -20°C to avoid repeated freeze-thaw cycles.
Uniprot ID	P56856

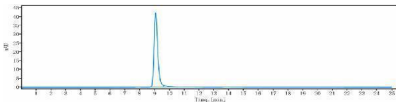
Technical Details

Isotype	IgG1
Form	Liquid

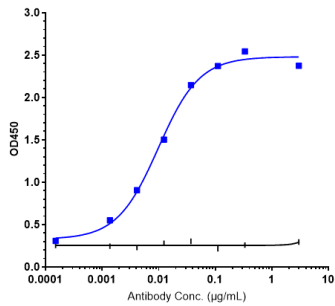
Anti-CLDN18.2 Reference Antibody (zolbetuximab) (M09129-1) Images



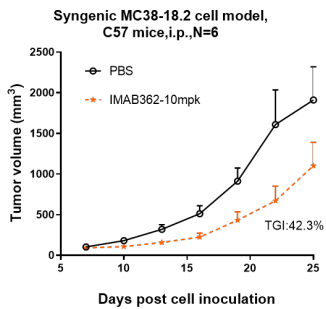
Anti-CLDN18.2 Reference Antibody (zolbetuximab) on SDS-PAGE under reducing (R) condition. The gel was stained with Coomassie Blue. The purity of the protein is greater than 95%



The purity of Anti-CLDN18.2 Reference Antibody (zolbetuximab) is more than 96.05%



Immobilized human CLDN18.2 VLP at 2 µg/mL can bind Anti-CLDN18.2 Reference Antibody (zolbetuximab)



Zolbetuximab inhibited the tumor growth of CLDN18.2-MC38 (Mouse colorectal cancer cells) on C57BL/6N mice. The result showed significant anti-tumor effects

Submit a product review to Biocompare.com

Submit a review of this product to Biocompare.com to receive a \$20 Amazon.com giftcard! Your reviews help your fellow scientists make the right decisions. Thank you for your contribution.



Anti-CLDN18.2 Reference Antibody (zolbetuximab)

For Research Use Only. Not for use in diagnostic procedures.