

Anti-IL-36R IL1RL2 Antibody (Monoclonal, ABM47A2)

Catalog Number: M09203

About IL1RL2

ASRGL1 (Asparaginase-like protein 1), also known as CRASH, is a 308 amino acid protein belonging to the Ntn-hydrolase family. Asparaginases utilize asparagine as a substrate to produce aspartic acid and ammonia. ASRGL1 has been identified as an autoantigenic protein that is present in the mid-piece of sperm after obstruction of the male reproductive tract. ASRGL1 is expressed highly in testis, but is also expressed in brain, kidney and gastrointestinal tissues. High levels of ASRGL1 have also been identified in ovarian, uterine and mammary tumors in comparison with normal tissues of the same origin.

Overview

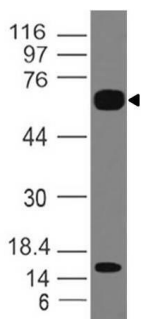
Product Name	Anti-IL-36R IL1RL2 Antibody (Monoclonal, ABM47A2)
Reactive Species	Human
Description	Boster Bio Anti-IL-36R IL1RL2 Antibody (Monoclonal, ABM47A2) (Catalog# M09203). Tested in FACS, WB application(s). This antibody reacts with Human.
Conjugate	Biotin
Application	WB, FACS
Clonality	Monoclonal ABM47A2
Formulation	100 µg in 200 µl PBS containing 0.05% stabilizing protein and 0.05% sodium azide This antibody is supplied in a stabilized formulation. Compatibility with conjugation reactions depends on the chemistry of the conjugation method used. For conjugation methods that are not compatible with the stabilizing components present in this formulation, a carrier-free antibody format is required.
Storage Instructions	Store the antibody at 4°C, stable for 6 months. For long-term storage, store at -20°C. Avoid repeated freeze and thaw cycles.
Host	Mouse
Uniprot ID	Q9HB29

Technical Details

Immunogen	A partial length recombinant IL-36R protein (amino acids 1-203)
Predicted Reactive Species	Pig, Rabbit
Cross Reactivity	Does not cross-react with primate, avian or amphibian GR.
Isotype	IgG2b, kappa
Form	Liquid

Concentration	0.5-1mg/ml, actual concentration vary by lot. Use suggested dilution ratio to decide dilution procedure.
Purification	Protein G Chromatography
Suggested Dilutions	Western blot: 2-4 µg/ml Flow cytometry: 0.5-1 µg/10 ⁶ Cells

Anti-IL-36R IL1RL2 Antibody (Monoclonal, ABM47A2) (M09203) Images



Western blot analysis of IL-36R. Anti-IL-36R antibody (Clone: ABM47A2) was tested at 2 μ

Submit a product review to Biocompare.com

Submit a review of this product to Biocompare.com to receive a \$20 Amazon.com giftcard! Your reviews help your fellow scientists make the right decisions. Thank you for your contribution.



Anti-IL-36R IL1RL2 Antibody (Monoclonal, ABM47A2)

For Research Use Only. Not for use in diagnostic procedures.