

Anti-TMEM100 Mouse Monoclonal Antibody [Clone ID: OTI1F8]

Catalog Number: M09266

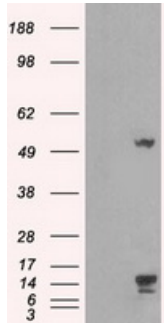
Overview

Product Name	Anti-TMEM100 Mouse Monoclonal Antibody [Clone ID: OTI1F8]
Reactive Species	Dog, Human, Monkey, Mouse, Rat
Description	Boster Bio Anti-TMEM100 mouse monoclonal antibody, clone OTI1F8 (formerly 1F8). Catalog# M09266. Tested in IHC, WB. This antibody reacts with Human, Monkey, Mouse, Rat, Dog.
Application	IHC, WB
Clonality	Monoclonal OTI1F8
Formulation	PBS (pH 7.3) containing 1% stabilizing protein, 50% glycerol and 0.02% sodium azide. This antibody is supplied in a stabilized formulation. Compatibility with conjugation reactions depends on the chemistry of the conjugation method used. For conjugation methods that are not compatible with the stabilizing components present in this formulation, a carrier-free antibody format is required.
Storage Instructions	Store at -20°C as received.
Host	Mouse
Uniprot ID	Q9NV29

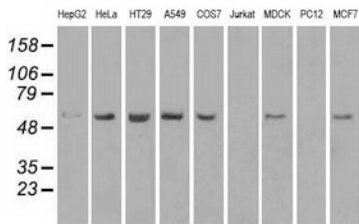
Technical Details

Immunogen	Full-length protein expressed in 293T cell transfected with human TMEM100 expression vector
Isotype	IgG2b
Concentration	1 mg/ml
Purification	Purified from mouse ascites fluids or tissue culture supernatant by affinity chromatography (protein A/G)
Suggested Dilutions	WB 1:1000 IHC 1:50

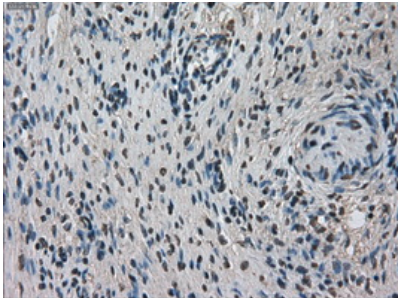
Anti-TMEM100 Mouse Monoclonal Antibody [Clone ID: OTI1F8] (M09266) Images



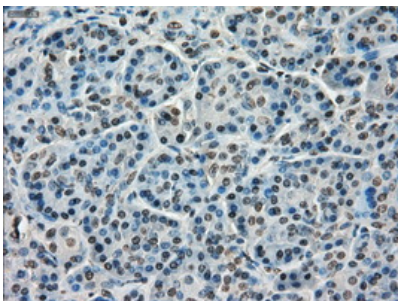
HEK293T cells were transfected with the pCMV6-ENTRY control (Left lane) or pCMV6-ENTRY TMEM100 (Right lane) cDNA for 48 hrs and lysed. Equivalent amounts of cell lysates (5 ug per lane) were separated by SDS-PAGE and immunoblotted with anti-TMEM100.



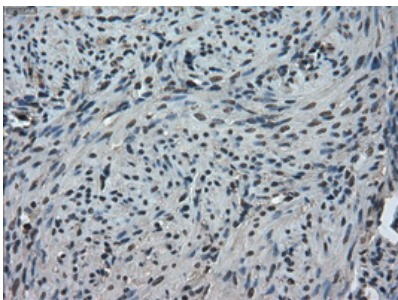
Western blot analysis of extracts (35ug) from 9 different cell lines by using anti-TMEM100 monoclonal antibody.



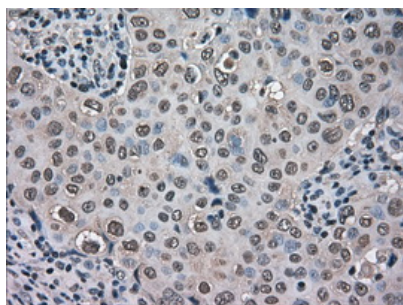
Immunohistochemical staining of paraffin-embedded Ovary tissue within the normal limits using anti-TMEM100 mouse monoclonal antibody. (Heat-induced epitope retrieval by 10mM citric buffer)



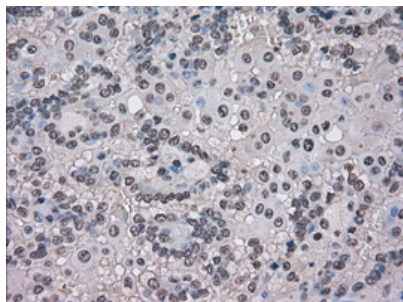
Immunohistochemical staining of paraffin-embedded pancreas tissue within the normal limits using anti-TMEM100 mouse monoclonal antibody. (Heat-induced epitope retrieval by 10mM citric buffer)



Immunohistochemical staining of paraffin-embedded endometrium tissue within the normal limits using anti-TMEM100 mouse monoclonal antibody. (Heat-induced epitope retrieval by 10mM citric buffer)



Immunohistochemical staining of paraffin-embedded Adenocarcinoma of breast tissue using anti-TMEM100 mouse monoclonal antibody. (Heat-induced epitope retrieval by 10mM citric buffer)



Immunohistochemical staining of paraffin-embedded Carcinoma of kidney tissue using anti-TMEM100 mouse monoclonal antibody. (Heat-induced epitope retrieval by 10mM citric buffer)

Submit a product review to Biocompare.com

Submit a review of this product to Biocompare.com to receive a \$20 Amazon.com giftcard! Your reviews help your fellow scientists make the right decisions. Thank you for your contribution.



Anti-TMEM100 Mouse Monoclonal Antibody [Clone ID: OT11F8]

For Research Use Only. Not for use in diagnostic procedures.