

Anti-PSMC2 Antibody

Catalog Number: M09306

About PSMC2

The 26S protease is involved in the ATP-dependent degradation of ubiquitinated proteins. The regulatory (or ATPase) complex confers ATP dependency and substrate specificity to the 26S complex. In case of HIV-1 infection, positive modulator of Tat-mediated transactivation.

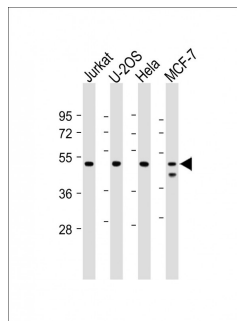
Overview

Product Name	Anti-PSMC2 Antibody
Reactive Species	Human
Description	Boster Bio Anti-PSMC2 Antibody (Catalog # M09306). Tested in WB application(s). This antibody reacts with Human.
Application	WB
Clonality	Monoclonal 1851CT193.4.40
Formulation	Purified monoclonal antibody supplied in PBS with 0.09% (W/V) sodium azide.
Storage Instructions	Maintain refrigerated at 2-8°C for up to 2 weeks. For long-term storage, store at -20°C in small aliquots to prevent freeze-thaw cycles.
Host	Mouse
Uniprot ID	P35998

Technical Details

Immunogen	This antibody is generated from a mouse immunized with a recombinant protein from human.
Predicted Reactive Species	Bovine, Monkey, Mouse
Isotype	IgG1,k
Purification	This antibody is purified through a protein G column, followed by dialysis against PBS.
Suggested Dilutions	WB: 1:2000

Anti-PSMC2 Antibody (M09306) Images



All lanes : Anti-PSMC2 at 1:2000 dilution
Lane 1: Jurkat whole cell lysate
Lane 2: U-2OS whole cell lysate
Lane 3: HeLa whole cell lysate
Lane 4: MCF-7 whole cell lysate
Lysates/proteins at 20 µg per lane. Secondary Goat Anti-mouse IgG, (H+L), Peroxidase conjugated at 1/10000 dilution. Predicted band size : 49 kDa
Blocking/Dilution buffer: 5% NFDM/TBST.

Submit a product review to Biocompare.com

Submit a review of this product to Biocompare.com to receive a \$20 Amazon.com giftcard! Your reviews help your fellow scientists make the right decisions. Thank you for your contribution.



Anti-PSMC2 Antibody

For Research Use Only. Not for use in diagnostic procedures.