

Anti-LXN Mouse Monoclonal Antibody [Clone ID: OTI1E10]

Catalog Number: M09395

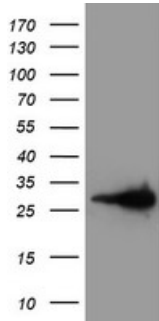
Overview

Product Name	Anti-LXN Mouse Monoclonal Antibody [Clone ID: OTI1E10]
Reactive Species	Human, Mouse
Description	Boster Bio LXN mouse monoclonal antibody, clone OTI1E10 (formerly 1E10). Catalog# M09395. Tested in FC, IHC, WB. This antibody reacts with Human, Mouse.
Application	Flow Cytometry, IHC, WB
Clonality	Monoclonal OTI1E10
Formulation	PBS (pH 7.3) containing 1% stabilizing protein, 50% glycerol and 0.02% sodium azide. This antibody is supplied in a stabilized formulation. Compatibility with conjugation reactions depends on the chemistry of the conjugation method used. For conjugation methods that are not compatible with the stabilizing components present in this formulation, a carrier-free antibody format is required.
Storage Instructions	Store at -20°C as received.
Host	Mouse
Uniprot ID	Q9BS40

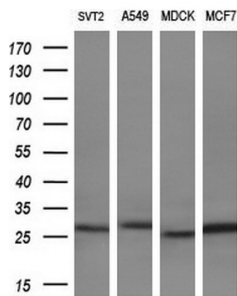
Technical Details

Immunogen	Full length human recombinant protein of human LXN (NP_064554) produced in HEK293T cell.
Isotype	IgG1
Concentration	1 mg/ml
Purification	Purified from mouse ascites fluids or tissue culture supernatant by affinity chromatography (protein A/G)
Suggested Dilutions	WB 1:2000 IHC 1:150 Flow Cytometry 1:100

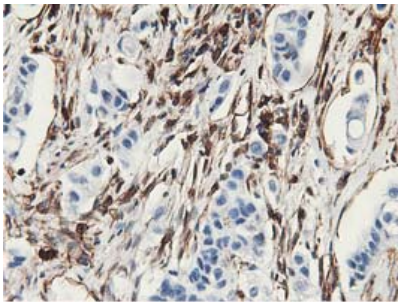
Anti-LXN Mouse Monoclonal Antibody [Clone ID: OTI1E10] (M09395) Images



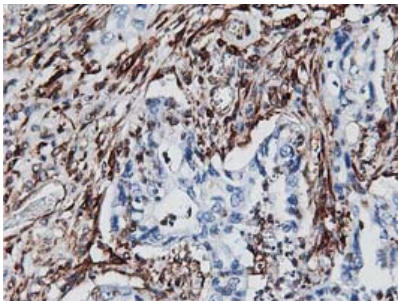
HEK293T cells were transfected with the pCMV6-ENTRY control (Left lane) or pCMV6-ENTRY LXN (Right lane) cDNA for 48 hrs and lysed. Equivalent amounts of cell lysates (5 ug per lane) were separated by SDS-PAGE and immunoblotted with anti-LXN.



Western blot analysis of extracts (10ug) from 4 different cell lines by using anti-LXN monoclonal antibody (1:200).

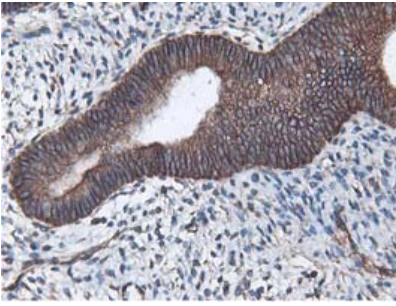


Immunohistochemical staining of paraffin-embedded Carcinoma of Human lung tissue using anti-LXN mouse monoclonal antibody. (Heat-induced epitope retrieval by 10mM citric buffer)

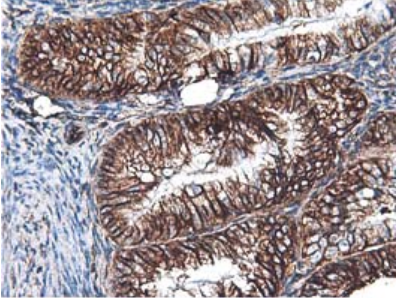


Immunohistochemical staining of paraffin-embedded Carcinoma of Human pancreas tissue using anti-LXN mouse monoclonal antibody. (Heat-induced epitope retrieval by 10mM citric buffer)

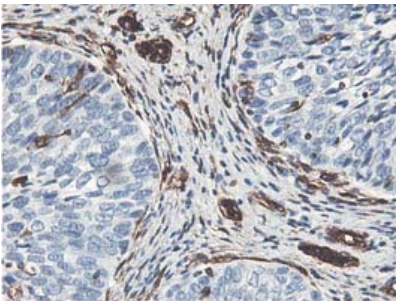
Immunohistochemical staining of paraffin-embedded Human endometrium tissue within the normal limits using anti-LXN mouse monoclonal antibody. (Heat-induced epitope retrieval by 10mM citric buffer)



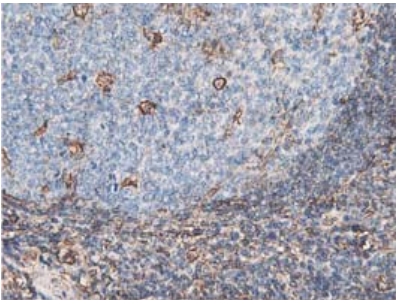
Immunohistochemical staining of paraffin-embedded Adenocarcinoma of Human endometrium tissue using anti-LXN mouse monoclonal antibody. (Heat-induced epitope retrieval by 10mM citric buffer)



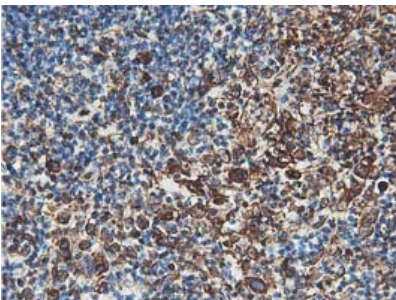
Immunohistochemical staining of paraffin-embedded Carcinoma of Human bladder tissue using anti-LXN mouse monoclonal antibody. (Heat-induced epitope retrieval by 10mM citric buffer)



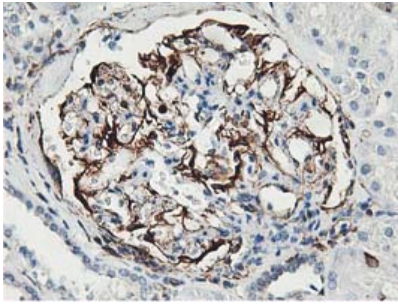
Immunohistochemical staining of paraffin-embedded Human lymph node tissue within the normal limits using anti-LXN mouse monoclonal antibody. (Heat-induced epitope retrieval by 10mM citric buffer)



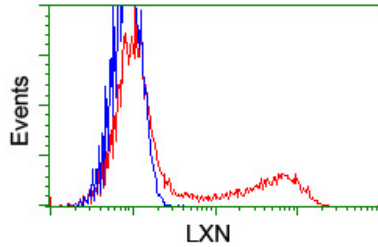
Immunohistochemical staining of paraffin-embedded Human lymphoma tissue using anti-LXN mouse monoclonal antibody. (Heat-induced epitope retrieval by 10mM citric buffer)



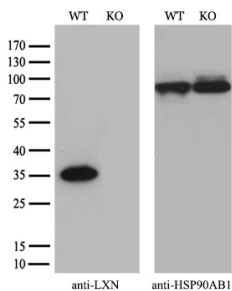
Immunohistochemical staining of paraffin-embedded Human Kidney tissue within the normal limits using anti-LXN mouse monoclonal antibody. (Heat-induced epitope retrieval by 10mM citric buffer)



10mM citric buffer



HEK293T cells transfected with either LXN (Myc-DDK-tagged) overexpress plasmid (Red) or empty vector control plasmid (Blue) were immunostained by anti-LXN antibody (M09395)



Equivalent amounts of cell lysates (10 ug per lane) of wild-type HeLa cells (WT) and LXN-Knockout HeLa cells (KO) were separated by SDS-PAGE and immunoblotted with anti-LXN monoclonal antibody M09395 (1:500⁺). Then the blotted membrane was stripped and re probed with anti-HSP90 antibody as a loading control.

Submit a product review to Biocompare.com

Submit a review of this product to Biocompare.com to receive a \$20 Amazon.com giftcard! Your reviews help your fellow scientists make the right decisions. Thank you for your contribution.



Anti-LXN Mouse Monoclonal Antibody [Clone ID: OT11E10]

For Research Use Only. Not for use in diagnostic procedures.